



Product datasheet

Anti-WSX-1 antibody ab5996

2 References 3 Images

Overview

| | | |
|----------------------------|---|---|
| Product name | Anti-WSX-1 antibody | |
| Description | Rabbit polyclonal to WSX-1 | |
| Host species | Rabbit | |
| Tested applications | Suitable for: ICC/IF, IHC-P, WB | |
| Species reactivity | Reacts with: Mouse, Rat, Human | |
| Immunogen | Synthetic peptide corresponding to Human WSX-1 aa 611-625 (C terminal). Sequence: SGYEKHFLLPTPEELG (Peptide available as ab39872) |  Run BLAST with  Run BLAST with |
| Positive control | Human spleen tissue lysate. | |
| General notes | Stable for one year. Protein previously labeled as TCCR. | |

Properties

| | |
|-----------------------------|--|
| Form | Liquid |
| Storage instructions | Shipped at 4°C. Store at +4°C short term (1-2 weeks). Store at -20°C. Avoid freeze / thaw cycle. |
| Storage buffer | Preservative: 0.02% Sodium azide Constituent: PBS |
| Purity | Immunogen affinity purified |
| Clonality | Polyclonal |
| Isotype | IgG |

Applications

Our [Abpromise guarantee](#) covers the use of **ab5996** in the following tested applications.

The application notes include recommended starting dilutions; optimal dilutions/concentrations should be determined by the end user.

| Application | Abreviews | Notes |
|-------------|-----------|---|
| ICC/IF | | Use a concentration of 20 µg/ml. |
| IHC-P | | Use a concentration of 5 µg/ml. |
| WB | | Use a concentration of 0.5 - 1 µg/ml. Detects a band of approximately 70 kDa. Can be blocked with Human WSX-1 peptide (ab39872) . |

Target

Function Receptor for IL27. Requires IL6ST/gp130 to mediate signal transduction in response to IL27. This signaling system acts through STAT3 and STAT1. Involved in the regulation of Th1-type immune responses. Also appears to be involved in innate defense mechanisms.

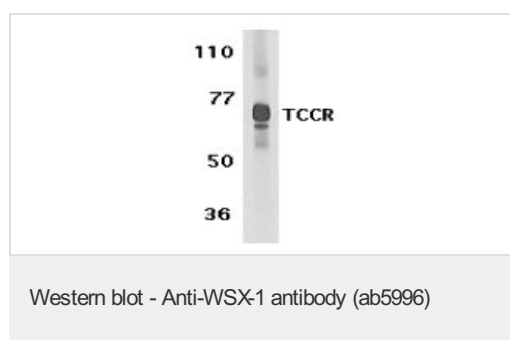
Tissue specificity Highly expressed in lymphoid tissues such as spleen, lymph nodes and peripheral blood leukocytes. Weakly expressed in other tissues examined including heart, brain, fetal and adult lung, liver, skeletal muscle, kidney, pancreas, prostate, testis, ovary, small intestine, kidney and colon. In the lymphoid system, higher level expression in CD4+ T-cell subsets than in CD8+ T-cell subsets. Also weaker expression in CD19+ B-cells and monocytes.

Sequence similarities Belongs to the type I cytokine receptor family. Type 2 subfamily. Contains 3 fibronectin type-III domains.

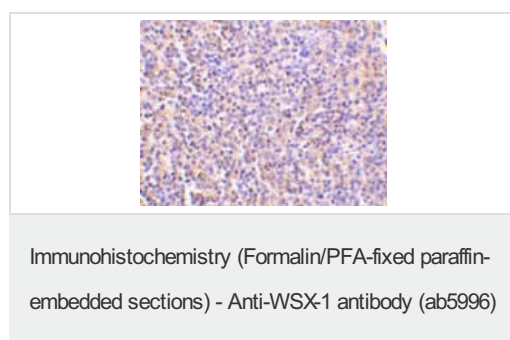
Domain The WSXWS motif appears to be necessary for proper protein folding and thereby efficient intracellular transport and cell-surface receptor binding. The box 1 motif is required for JAK interaction and/or activation.

Cellular localization Membrane.

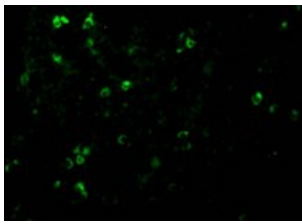
Images



Anti-WSX-1 antibody (ab5996) at 1 µg/ml + Human spleen tissue lysate



ab5996 at 5µg/ml staining WSX-1 in human spleen tissue by IHC



Immunofluorescence of WSX-1 in Human Spleen cells using ab5996 at 20 ug/ml.

Immunocytochemistry/ Immunofluorescence - Anti-WSX-1 antibody (ab5996)

Please note: All products are "FOR RESEARCH USE ONLY AND ARE NOT INTENDED FOR DIAGNOSTIC OR THERAPEUTIC USE"

Our Abpromise to you: Quality guaranteed and expert technical support

- Replacement or refund for products not performing as stated on the datasheet
- Valid for 12 months from date of delivery
- Response to your inquiry within 24 hours
- We provide support in Chinese, English, French, German, Japanese and Spanish
- Extensive multi-media technical resources to help you
- We investigate all quality concerns to ensure our products perform to the highest standards

If the product does not perform as described on this datasheet, we will offer a refund or replacement. For full details of the Abpromise, please visit <https://www.abcam.com/abpromise> or contact our technical team.

Terms and conditions

- Guarantee only valid for products bought direct from Abcam or one of our authorized distributors