


## Product datasheet

# Anti-XRCC1 (phospho S461) antibody ab84413

[2 Images](#)

### Overview

<b>Product name</b>	Anti-XRCC1 (phospho S461) antibody
<b>Description</b>	Rabbit polyclonal to XRCC1 (phospho S461)
<b>Host species</b>	Rabbit
<b>Tested applications</b>	<b>Suitable for:</b> IHC-P
<b>Species reactivity</b>	<b>Reacts with:</b> Mouse, Human <b>Predicted to work with:</b> Chimpanzee, Rhesus monkey, Gorilla, Orangutan 
<b>Immunogen</b>	Synthetic peptide (the amino acid sequence is considered to be commercially sensitive) corresponding to a region surrounding Serine 461 of Human XRCC1 (P18887)
<b>Positive control</b>	Human breast adenocarcinoma; Mouse squamous cell carcinoma.

### Properties

<b>Form</b>	Liquid
<b>Storage instructions</b>	Shipped at 4°C. Upon delivery aliquot and store at -20°C. Avoid freeze / thaw cycles.
<b>Storage buffer</b>	Preservative: 0.09% Sodium Azide Constituents: 0.1% BSA, Tris buffered saline
<b>Purity</b>	Immunogen affinity purified
<b>Clonality</b>	Polyclonal
<b>Isotype</b>	IgG

### Applications

Our [Abpromise guarantee](#) covers the use of **ab84413** in the following tested applications.

The application notes include recommended starting dilutions; optimal dilutions/concentrations should be determined by the end user.

Application	Abreviews	Notes
IHC-P		

<b>Application notes</b>	IHC-P: 1/100 - 1/500. Antigen retrieval with citrate buffer will enhance staining. Note: expected to work on frozen sections.
--------------------------	--

Not yet tested in other applications.

Optimal dilutions/concentrations should be determined by the end user.

## Target

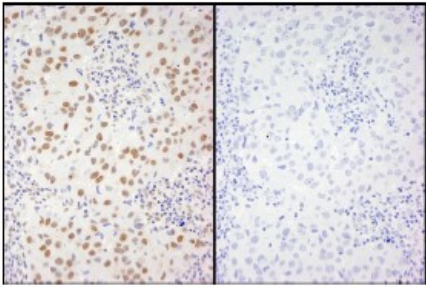
---

<b>Function</b>	Corrects defective DNA strand-break repair and sister chromatid exchange following treatment with ionizing radiation and alkylating agents.
<b>Sequence similarities</b>	Contains 2 BRCT domains.
<b>Post-translational modifications</b>	Phosphorylation of Ser-371 causes dimer dissociation. Phosphorylation by CK2 promotes interaction with APTX and APLF. Sumoylated.
<b>Cellular localization</b>	Nucleus. Accumulates at sites of DNA damage.

---

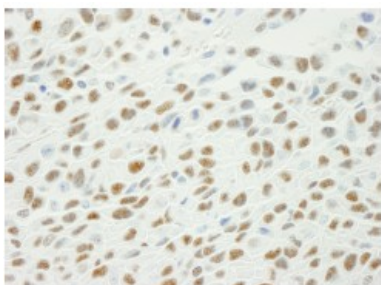
## Images

---



Immunohistochemistry analysis of two serial sections of formalin-fixed, paraffin-embedded Human breast adenocarcinoma, using 1/250 ab84413 followed by DAB staining. Left panel: mock phosphatase treated; Right panel: calf intestinal phosphatase-treated.

Immunohistochemistry (Formalin/PFA-fixed paraffin-embedded sections) - Anti- $\gamma$ H2AX (phospho S139) antibody (ab84413)



Immunohistochemistry analysis of formalin-fixed, paraffin-embedded Mouse squamous cell carcinoma, using 1/250 ab84413 followed DAB staining.

Immunohistochemistry (Formalin/PFA-fixed paraffin-embedded sections) - Anti- $\gamma$ H2AX (phospho S139) antibody (ab84413)

**Please note:** All products are "FOR RESEARCH USE ONLY AND ARE NOT INTENDED FOR DIAGNOSTIC OR THERAPEUTIC USE"

## **Our Abpromise to you: Quality guaranteed and expert technical support**

---

- Replacement or refund for products not performing as stated on the datasheet
- Valid for 12 months from date of delivery
- Response to your inquiry within 24 hours
  
- We provide support in Chinese, English, French, German, Japanese and Spanish
- Extensive multi-media technical resources to help you
- We investigate all quality concerns to ensure our products perform to the highest standards

If the product does not perform as described on this datasheet, we will offer a refund or replacement. For full details of the Abpromise, please visit <https://www.abcam.com/abpromise> or contact our technical team.

## **Terms and conditions**

---

- Guarantee only valid for products bought direct from Abcam or one of our authorized distributors