


Product datasheet

Anti-ZMYM2 antibody ab114996

3 Images

Overview

Product name	Anti-ZMYM2 antibody
Description	Rabbit polyclonal to ZMYM2
Host species	Rabbit
Tested applications	Suitable for: IHC-P
Species reactivity	Reacts with: Mouse, Human Predicted to work with: Rat, Rabbit, Guinea pig, Cow, Dog, Chimpanzee, Rhesus monkey, Gorilla, Orangutan, Elephant 
Immunogen	Synthetic peptide corresponding to a region between residues 1327 and 1377 of Human ZMYM2 (NP_003444.1).
Positive control	Human Controls: Anaplastic Thyroid Carcinoma, Breast Carcinoma, Colon Carcinoma, Linitis Plastica Stomach Cancer, Ovarian Carcinoma, Small Cell Lung Cancer, Stomach Adenocarcinoma Mouse Controls: Teratoma

Properties

Form	Liquid
Storage instructions	Shipped at 4°C. Upon delivery aliquot and store at -20°C. Avoid freeze / thaw cycles.
Storage buffer	Preservative: 0.09% Sodium azide Constituents: 99% Tris buffered saline, 0.1% BSA Note: pH 7 to 8
Purity	Immunogen affinity purified
Purification notes	ab114996 was affinity purified using an epitope specific to ZMYM2 immobilized on solid support.
Clonality	Polyclonal
Isotype	IgG

Applications

Our [Abpromise guarantee](#) covers the use of **ab114996** in the following tested applications.

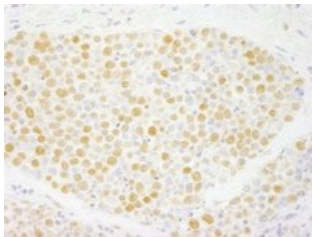
The application notes include recommended starting dilutions; optimal dilutions/concentrations should be determined by the end user.

Application	Abreviews	Notes
IHC-P		1/100 - 1/500. Epitope exposure is recommended. Epitope exposure with citrate buffer will enhance staining. Likely to work with frozen sections

Target

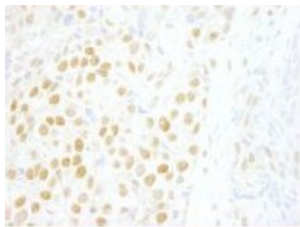
Function	May function as a transcription factor.
Involvement in disease	Note=A chromosomal aberration involving ZMYM2 may be a cause of stem cell leukemia lymphoma syndrome (SCLL). Translocation t(8;13)(p11;q12) with FGFR1. SCLL usually presents as lymphoblastic lymphoma in association with a myeloproliferative disorder, often accompanied by pronounced peripheral eosinophilia and/or prominent eosinophilic infiltrates in the affected bone marrow.
Sequence similarities	Contains 9 MYM-type zinc fingers.
Cellular localization	Nucleus.
Form	There are 2 isoforms produced by alternative splicing.

Images



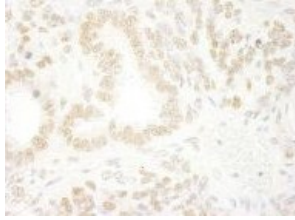
ab114996, at a 1/250 dilution, staining ZMYM2 in formalin fixed paraffin embedded Human small cell lung cancer by Immunohistochemistry. Detected using DAB staining.

Immunohistochemistry (Formalin/PFA-fixed paraffin-embedded sections) - Anti-ZMYM2 antibody (ab114996)



ab114996, at a 1/250 dilution, staining ZMYM2 in formalin fixed paraffin embedded Human breast carcinoma by Immunohistochemistry. Detected using DAB staining.

Immunohistochemistry (Formalin/PFA-fixed paraffin-embedded sections) - Anti-ZMYM2 antibody (ab114996)



ab114996, at a 1/250 dilution, staining ZMYM2 in formalin fixed paraffin embedded Mouse teratoma by Immunohistochemistry. Detected using DAB staining.

Immunohistochemistry (Formalin/PFA-fixed paraffin-embedded sections) - Anti-ZMYM2 antibody (ab114996)

Please note: All products are "FOR RESEARCH USE ONLY AND ARE NOT INTENDED FOR DIAGNOSTIC OR THERAPEUTIC USE"

Our Abpromise to you: Quality guaranteed and expert technical support

- Replacement or refund for products not performing as stated on the datasheet
- Valid for 12 months from date of delivery
- Response to your inquiry within 24 hours
- We provide support in Chinese, English, French, German, Japanese and Spanish
- Extensive multi-media technical resources to help you
- We investigate all quality concerns to ensure our products perform to the highest standards

If the product does not perform as described on this datasheet, we will offer a refund or replacement. For full details of the Abpromise, please visit <https://www.abcam.com/abpromise> or contact our technical team.

Terms and conditions

- Guarantee only valid for products bought direct from Abcam or one of our authorized distributors