

Product datasheet

Anti-OGFr antibody ab110527

1 Image

Overview

<b>Product name</b>	Anti-OGFr antibody
<b>Description</b>	Rabbit polyclonal to OGFr
<b>Host species</b>	Rabbit
<b>Tested applications</b>	<b>Suitable for:</b> WB
<b>Species reactivity</b>	<b>Reacts with:</b> Human
<b>Immunogen</b>	Synthetic peptide derived from an internal region of Human Zeta Opioid Receptor.
<b>Positive control</b>	HeLa and HepG2 cell extracts.

Properties

<b>Form</b>	Liquid
<b>Storage instructions</b>	Shipped at 4°C. Store at -20°C. Stable for 12 months at -20°C.
<b>Storage buffer</b>	pH: 7.40 Preservative: 0.02% Sodium azide Constituents: PBS, 0.88% Sodium chloride, 50% Glycerol Note: without Mg <sup>2+</sup> and Ca <sup>2+</sup>
<b>Purity</b>	Immunogen affinity purified
<b>Purification notes</b>	ab110527 was affinity-purified from rabbit antiserum by affinity-chromatography using epitope-specific immunogen.
<b>Clonality</b>	Polyclonal
<b>Isotype</b>	IgG

Applications

Our [Abpromise guarantee](#) covers the use of **ab110527** in the following tested applications.

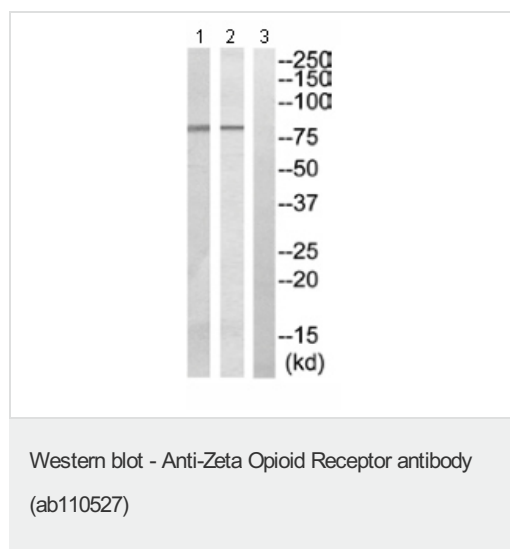
The application notes include recommended starting dilutions; optimal dilutions/concentrations should be determined by the end user.

Application	Abreviews	Notes
WB		1/500 - 1/1000. Predicted molecular weight: 73 kDa.

## Target

<b>Function</b>	Receptor for opioid growth factor (OGF), also known as Met-enkephalin. Seems to be involved in growth regulation.
<b>Tissue specificity</b>	Highly expressed in the heart and liver, moderately in skeletal muscle and kidney and to a lesser extent in brain and pancreas. Expressed in fetal tissues including liver and kidney.
<b>Sequence similarities</b>	Belongs to the opioid growth factor receptor family.
<b>Post-translational modifications</b>	Phosphorylated upon DNA damage, probably by ATM or ATR.
<b>Cellular localization</b>	Cytoplasm. Nucleus. The OGF/OGFR complex is probably translocated to the nucleus.

## Images



**All lanes :** Anti-OGFr antibody (ab110527) at 1/500 dilution

**Lane 1 :** HepG2 cell extract

**Lane 2 :** HeLa cell extract

**Lane 3 :** HeLa cell extract with immunizing peptide at 10 µg

Lysates/proteins at 30 µg per lane.

**Predicted band size:** 73 kDa

**Please note:** All products are "FOR RESEARCH USE ONLY AND ARE NOT INTENDED FOR DIAGNOSTIC OR THERAPEUTIC USE"

## Our Abpromise to you: Quality guaranteed and expert technical support

- Replacement or refund for products not performing as stated on the datasheet
- Valid for 12 months from date of delivery
- Response to your inquiry within 24 hours
- We provide support in Chinese, English, French, German, Japanese and Spanish
- Extensive multi-media technical resources to help you
- We investigate all quality concerns to ensure our products perform to the highest standards

If the product does not perform as described on this datasheet, we will offer a refund or replacement. For full details of the Abpromise, please visit <https://www.abcam.com/abpromise> or contact our technical team.

## Terms and conditions

- Guarantee only valid for products bought direct from Abcam or one of our authorized distributors