

Product datasheet

Anti-AACT antibody ab88527

1 References 3 Images

Overview

Product name	Anti-AACT antibody
Description	Mouse polyclonal to AACT
Host species	Mouse
Tested applications	Suitable for: WB, ICC/IF
Species reactivity	Reacts with: Human
Immunogen	Full length protein corresponding to Human AACT. Database link: NP_001076.2
Positive control	WB: HeLa cell lysate and AACT transfected 293T cell lysate IF: HeLa cell

Properties

Form	Liquid
Storage instructions	Shipped at 4°C. Upon delivery aliquot and store at -20°C or -80°C. Avoid repeated freeze / thaw cycles.
Storage buffer	pH: 7.20 Constituent: 2.68% PBS
Purity	Protein A purified
Clonality	Polyclonal
Isotype	IgG

Applications

Our [Abpromise guarantee](#) covers the use of **ab88527** in the following tested applications.

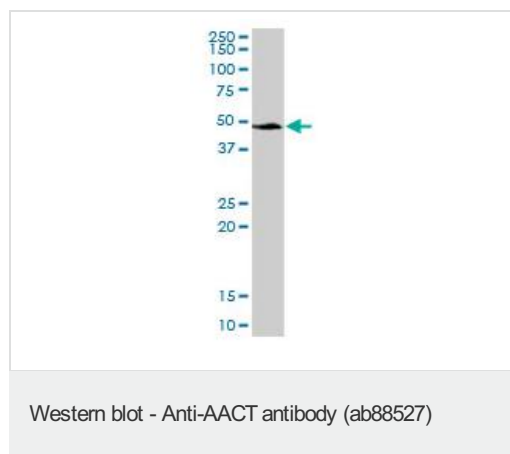
The application notes include recommended starting dilutions; optimal dilutions/concentrations should be determined by the end user.

Application	Abreviews	Notes
WB		Use a concentration of 1 µg/ml. Predicted molecular weight: 48 kDa.
ICC/IF		Use a concentration of 10 µg/ml.

Target

Function	Although its physiological function is unclear, it can inhibit neutrophil cathepsin G and mast cell chymase, both of which can convert angiotensin-1 to the active angiotensin-2.
Tissue specificity	Plasma. Synthesized in the liver. Like the related alpha-1-antitrypsin, its concentration increases in the acute phase of inflammation or infection. Found in the amyloid plaques from the hippocampus of Alzheimer disease brains.
Involvement in disease	Defects in SERPINA3 may be a cause of chronic obstructive pulmonary disease (COPD) [MIM:107280].
Sequence similarities	Belongs to the serpin family.
Domain	The reactive center loop (RCL) extends out from the body of the protein and directs binding to the target protease. The protease cleaves the serpin at the reactive site within the RCL, establishing a covalent linkage between the carboxyl group of the serpin reactive site and the serine hydroxyl of the protease. The resulting inactive serpin-protease complex is highly stable.
Cellular localization	Secreted.

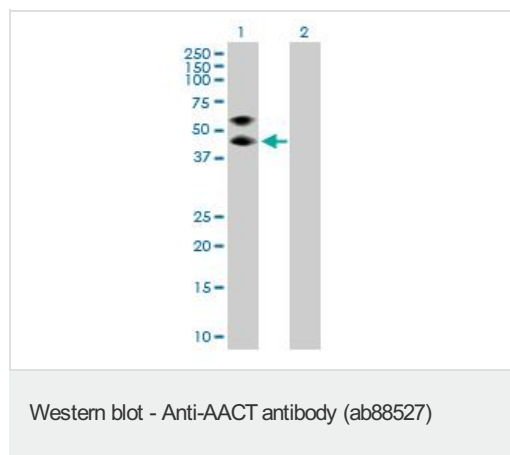
Images



Anti-AACT antibody (ab88527) at 1 µg/ml + HeLa cell lysate at 50 µg

Predicted band size: 48 kDa

Observed band size: 48 kDa



All lanes : Anti-AACT antibody (ab88527) at 1 µg/ml

Lane 1 : AACT transfected 293T cell lysate

Lane 2 : Non transfected 293T cell lysate

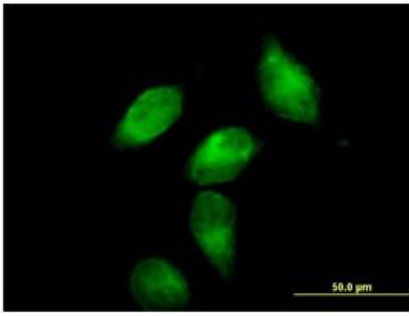
Lysates/proteins at 25 µg per lane.

Predicted band size: 48 kDa

Observed band size: 47 kDa

[why is the actual band size different from the predicted?](#)

Additional bands at: 60 kDa. We are unsure as to the identity of these extra bands.



Immunocytochemistry/ Immunofluorescence - Anti-AACT antibody (ab88527)

ab88527 at 10 μg/ml staining AACT in paraformaldehyde fixed, permeabilised HeLa cells, by immunofluorescence.

Please note: All products are "FOR RESEARCH USE ONLY. NOT FOR USE IN DIAGNOSTIC PROCEDURES"

Our Abpromise to you: Quality guaranteed and expert technical support

- Replacement or refund for products not performing as stated on the datasheet
- Valid for 12 months from date of delivery
- Response to your inquiry within 24 hours
- We provide support in Chinese, English, French, German, Japanese and Spanish
- Extensive multi-media technical resources to help you
- We investigate all quality concerns to ensure our products perform to the highest standards

If the product does not perform as described on this datasheet, we will offer a refund or replacement. For full details of the Abpromise, please visit <https://www.abcam.com/abpromise> or contact our technical team.

Terms and conditions

- Guarantee only valid for products bought direct from Abcam or one of our authorized distributors