

Product datasheet

Anti-PAPP A antibody [18A10] ab10196

[1 References](#) [1 Image](#)

Overview

| | |
|----------------------------|--|
| Product name | Anti-PAPP A antibody [18A10] |
| Description | Mouse monoclonal [18A10] to PAPP A |
| Host species | Mouse |
| Tested applications | Suitable for: WB, ELISA |
| Species reactivity | Reacts with: Human |
| Immunogen | Purified human PAPP A antigen |
| General notes | Concentration varies from lot to lot and can be provided on request. |

Properties

| | |
|-----------------------------|---|
| Form | Liquid |
| Storage instructions | Shipped at 4°C. Upon delivery aliquot and store at -20°C. Avoid freeze / thaw cycles. |
| Storage buffer | Preservative: 0.1% Sodium Azide Constituents: PBS, pH 7.4 |
| Purity | Protein A purified |
| Purification notes | Purified by chromatography on protein A. Purity tested by electrophoresis |
| Clonality | Monoclonal |
| Clone number | 18A10 |
| Myeloma | Sp2/0 |
| Isotype | IgG2a |

Applications

Our [Abpromise guarantee](#) covers the use of **ab10196** in the following tested applications.

The application notes include recommended starting dilutions; optimal dilutions/concentrations should be determined by the end user.

| Application | Abreviews | Notes |
|-------------|-----------|-------|
| WB | | |

| Application | Abreviews | Notes |
|-------------|-----------|-------|
|-------------|-----------|-------|

ELISA

Application notes

ELISA: Use at an assay dependent dilution.
 WB: Use at an assay dependent dilution. Detects a band of approximately 200 kDa under reducing conditions. (predicted molecular weight: 195 kDa).
 Not tested in other applications.
 Optimal dilutions/concentrations should be determined by the end user.

Target

Function

Metalloproteinase which specifically cleaves IGFBP-4 and IGFBP-5, resulting in release of bound IGF. Cleavage of IGFBP-4 is dramatically enhanced by the presence of IGF, whereas cleavage of IGFBP-5 is slightly inhibited by the presence of IGF.

Tissue specificity

High levels in placenta and pregnancy serum. In placenta, expressed in X cells in septa and anchoring villi, and in syncytiotrophoblasts in the chorionic villi. Lower levels are found in a variety of other tissues including kidney, myometrium, endometrium, ovaries, breast, prostate, bone marrow, colon, fibroblasts and osteoblasts.

Sequence similarities

Belongs to the peptidase M43B family.
 Contains 5 Sushi (CCP/SCR) domains.

Developmental stage

Present in serum and placenta during pregnancy; levels increase throughout pregnancy.

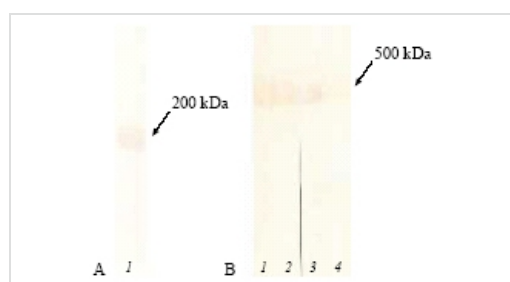
Post-translational modifications

There appear to be no free sulfhydryl groups.

Cellular localization

Secreted.

Images



Western blot - Anti-PAPP A antibody [18A10] (ab10196)

Detection of human PAPP-A by ab10196 in Western Blotting. A. ab10196 recognizes PAPP-A subunit after SDS-gel electrophoresis in reducing conditions (gradient gel 5 % – 15 %) B. ab10196 recognizes heterotetrameric complex (gradient gel 2.5 % – 10 %) Detection of human PAPP-A by ab10196 in Western Blotting. A. ab10196 recognizes PAPP-A subunit after SDS-gel electrophoresis in reducing conditions (gradient gel 5 % – 15 %) B. ab10196 recognizes heterotetrameric complex (gradient gel 2.5 % – 10 %)

Please note: All products are "FOR RESEARCH USE ONLY AND ARE NOT INTENDED FOR DIAGNOSTIC OR THERAPEUTIC USE"

Our Abpromise to you: Quality guaranteed and expert technical support

- Replacement or refund for products not performing as stated on the datasheet
- Valid for 12 months from date of delivery
- Response to your inquiry within 24 hours

- We provide support in Chinese, English, French, German, Japanese and Spanish
- Extensive multi-media technical resources to help you
- We investigate all quality concerns to ensure our products perform to the highest standards

If the product does not perform as described on this datasheet, we will offer a refund or replacement. For full details of the Abpromise, please visit <https://www.abcam.com/abpromise> or contact our technical team.

Terms and conditions

- Guarantee only valid for products bought direct from Abcam or one of our authorized distributors