

Product datasheet

Anti-NARFL antibody ab103259

1 Image

Overview

Product name	Anti-NARFL antibody
Description	Rabbit polyclonal to NARFL
Host species	Rabbit
Tested applications	Suitable for: WB
Species reactivity	Reacts with: Human
Immunogen	Synthetic peptide corresponding to internal sequence amino acids 247-277 of Human NARFL, conjugated to KLH.
Positive control	MDA-MB435 cell line lysates

Properties

Form	Liquid
Storage instructions	Shipped at 4°C. Store at +4°C short term (1-2 weeks). Upon delivery aliquot. Store at -20°C long term.
Storage buffer	Preservative: 0.09% Sodium Azide Constituents: PBS
Purity	Immunogen affinity purified
Purification notes	Purified through a protein A column, followed by peptide affinity purification.
Clonality	Polyclonal
Isotype	IgG

Applications

Our [Abpromise guarantee](#) covers the use of **ab103259** in the following tested applications.

The application notes include recommended starting dilutions; optimal dilutions/concentrations should be determined by the end user.

Application	Abreviews	Notes
WB		1/100 - 1/500. Predicted molecular weight: 53 kDa.

Target

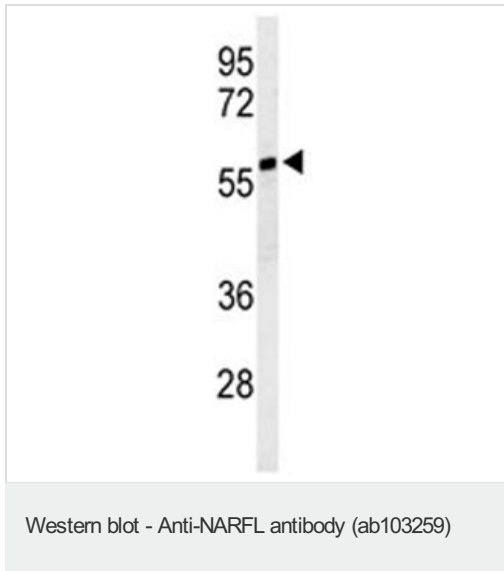
Relevance

NARFL is a component of the cytosolic iron-sulfur (Fe/S) protein assembly machinery. Required for maturation of extramitochondrial Fe/S proteins. Seems to negatively regulate the level of HIF1A expression, although this effect could be indirect.

Cellular localization

Nuclear Cytosolic iron-sulfur protein assembly complex

Images



Anti-NARFL antibody (ab103259) at 1/100 dilution + MDA-MB435 cell line lysates at 35 μ g

Predicted band size: 53 kDa

Please note: All products are "FOR RESEARCH USE ONLY AND ARE NOT INTENDED FOR DIAGNOSTIC OR THERAPEUTIC USE"

Our Abpromise to you: Quality guaranteed and expert technical support

- Replacement or refund for products not performing as stated on the datasheet
- Valid for 12 months from date of delivery
- Response to your inquiry within 24 hours
- We provide support in Chinese, English, French, German, Japanese and Spanish
- Extensive multi-media technical resources to help you
- We investigate all quality concerns to ensure our products perform to the highest standards

If the product does not perform as described on this datasheet, we will offer a refund or replacement. For full details of the Abpromise, please visit <https://www.abcam.com/abpromise> or contact our technical team.

Terms and conditions

- Guarantee only valid for products bought direct from Abcam or one of our authorized distributors