

Product datasheet

Anti-Hydrogen Potassium ATPase Beta antibody ab103515

1 Image

Overview

Product name	Anti-Hydrogen Potassium ATPase Beta antibody
Description	Rabbit polyclonal to Hydrogen Potassium ATPase Beta
Host species	Rabbit
Tested applications	Suitable for: WB
Species reactivity	Reacts with: Mouse, Human
Immunogen	Synthetic peptide conjugated to KLH, corresponding to a region within N terminal amino acids 60-90 of Human Hydrogen Potassium ATPase Beta.
Positive control	Mouse heart tissue lysates.

Properties

Form	Liquid
Storage instructions	Shipped at 4°C. Store at 4°C (up to 6 months). Store at -20°C long term.
Storage buffer	Preservative: 0.09% Sodium Azide Constituents: PBS
Purity	Immunogen affinity purified
Purification notes	This antibody is purified through a protein A column, followed by peptide affinity purification.
Clonality	Polyclonal
Isotype	IgG

Applications

Our [Abpromise guarantee](#) covers the use of **ab103515** in the following tested applications.

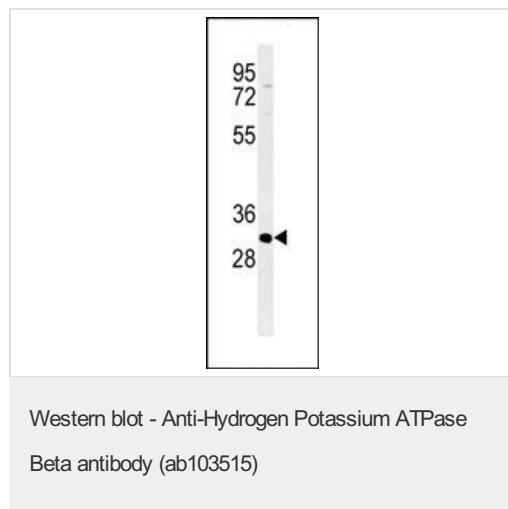
The application notes include recommended starting dilutions; optimal dilutions/concentrations should be determined by the end user.

Application	Abreviews	Notes
WB		1/100 - 1/500. Predicted molecular weight: 33 kDa.

Target

Function	Required for stabilization and maturation of the catalytic proton pump alpha subunit and may also involved in cell adhesion and establishing epithelial cell polarity.
Sequence similarities	Belongs to the X(+)/potassium ATPases subunit beta family.
Domain	The C-terminal lobe folds into an immunoglobulin-like domain and mediates cell adhesion properties.
Cellular localization	Cell membrane.

Images



Anti-Hydrogen Potassium ATPase Beta antibody (ab103515) at 1/100 dilution +
Mouse heart tissue lysates at 35 µg

Predicted band size: 33 kDa

Please note: All products are "FOR RESEARCH USE ONLY AND ARE NOT INTENDED FOR DIAGNOSTIC OR THERAPEUTIC USE"

Our Abpromise to you: Quality guaranteed and expert technical support

- Replacement or refund for products not performing as stated on the datasheet
- Valid for 12 months from date of delivery
- Response to your inquiry within 24 hours
- We provide support in Chinese, English, French, German, Japanese and Spanish
- Extensive multi-media technical resources to help you
- We investigate all quality concerns to ensure our products perform to the highest standards

If the product does not perform as described on this datasheet, we will offer a refund or replacement. For full details of the Abpromise, please visit <https://www.abcam.com/abpromise> or contact our technical team.

Terms and conditions

- Guarantee only valid for products bought direct from Abcam or one of our authorized distributors