

Product datasheet

Anti-APOBEC2 antibody ab104114

1 Image

Overview

Product name	Anti-APOBEC2 antibody
Description	Rabbit polyclonal to APOBEC2
Host species	Rabbit
Tested applications	Suitable for: WB
Species reactivity	Reacts with: Human Predicted to work with: Mouse, Rat, Rabbit, Horse, Chicken, Guinea pig, Cow, Cat, Dog
Immunogen	Synthetic peptide corresponding to a region within internal sequence amino acids 174-223 (CKLRIMKPQD FEYVWQNFVE QEEGESKAFQ PWEDIQENFL YYEEKLADIL) of Human APOBEC2 (NP_006780). Run BLAST with ExPASy Run BLAST with NCBI
Positive control	COLO205 cell lysate

Properties

Form	Liquid
Storage instructions	Shipped at 4°C. Upon delivery aliquot and store at -20°C. Avoid repeated freeze / thaw cycles.
Storage buffer	Preservative: None Constituents: 2% Sucrose, PBS
Purity	Immunogen affinity purified
Clonality	Polyclonal
Isotype	IgG

Applications

Our [Abpromise guarantee](#) covers the use of **ab104114** in the following tested applications.

The application notes include recommended starting dilutions; optimal dilutions/concentrations should be determined by the end user.

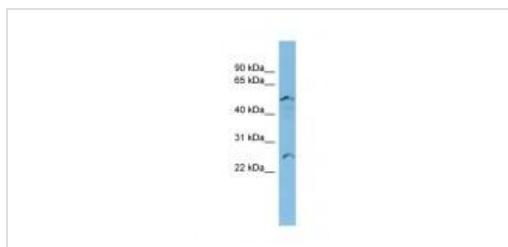
Application	Abreviews	Notes
WB		Use a concentration of 1 - 5 µg/ml. Predicted molecular weight: 26 kDa. Good results were obtained when blocked with 5% non-fat dry milk in 0.05% PBS-T.

Target

Relevance

APOBEC2 belongs to the cytidine and deoxycytidylate deaminase family. It is probable C to U editing enzyme whose physiological substrate is not yet known. It does not display detectable apoB mRNA editing and has a low intrinsic cytidine deaminase activity.

Images



Western blot - Anti-APOBEC2 antibody (ab104114)

Anti-APOBEC2 antibody (ab104114) at 5
µg/ml + COLO205 cell lysate at 10 µg

Predicted band size: 26 kDa

Gel concentration: 12%

Please note: All products are "FOR RESEARCH USE ONLY AND ARE NOT INTENDED FOR DIAGNOSTIC OR THERAPEUTIC USE"

Our Abpromise to you: Quality guaranteed and expert technical support

- Replacement or refund for products not performing as stated on the datasheet
- Valid for 12 months from date of delivery
- Response to your inquiry within 24 hours
- We provide support in Chinese, English, French, German, Japanese and Spanish
- Extensive multi-media technical resources to help you
- We investigate all quality concerns to ensure our products perform to the highest standards

If the product does not perform as described on this datasheet, we will offer a refund or replacement. For full details of the Abpromise, please visit <https://www.abcam.com/abpromise> or contact our technical team.

Terms and conditions

- Guarantee only valid for products bought direct from Abcam or one of our authorized distributors