

Product datasheet

Anti-GBAS antibody ab104201

2 Images

Overview

Product name	Anti-GBAS antibody
Description	Rabbit polyclonal to GBAS
Host species	Rabbit
Tested applications	Suitable for: WB, IHC-P
Species reactivity	Reacts with: Human
Immunogen	Synthetic peptide corresponding to a region within internal sequence amino acids 140-170 of Human GBAS, conjugated to KLH.
Positive control	Ramos cell line lysates; Human skeletal muscle tissue

Properties

Form	Liquid
Storage instructions	Shipped at 4°C. Store at 4°C (up to 6 months). Store at -20°C long term.
Storage buffer	Preservative: 0.09% Sodium azide Constituent: PBS
Purity	Immunogen affinity purified
Purification notes	This antibody is purified through a protein A column, followed by peptide affinity purification.
Clonality	Polyclonal
Isotype	IgG

Applications

Our [Abpromise guarantee](#) covers the use of **ab104201** in the following tested applications.

The application notes include recommended starting dilutions; optimal dilutions/concentrations should be determined by the end user.

Application	Abreviews	Notes
WB		1/100 - 1/500. Predicted molecular weight: 34 kDa.
IHC-P		1/50 - 1/100. Perform heat mediated antigen retrieval with citrate buffer pH 6 before commencing with IHC staining protocol.

Target

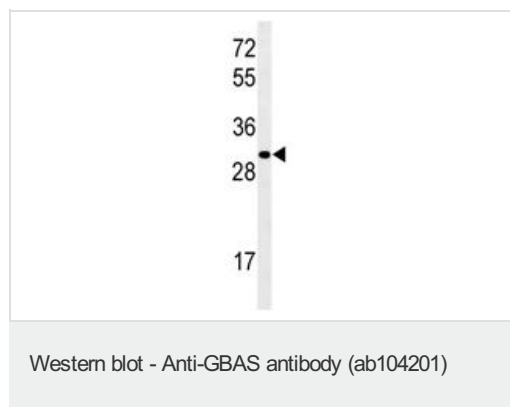
Tissue specificity

Widely expressed. Most abundant in heart and skeletal muscle.

Sequence similarities

Belongs to the NipSnap family.

Images



Anti-GBAS antibody (ab104201) at 1/100 dilution + Ramos cell line lysates at 35 μ g

Predicted band size: 34 kDa



ab104201, at a 1/50 dilution, staining GBAS in formalin fixed and paraffin embedded Human skeletal muscle by Immunohistochemistry, followed by peroxidase conjugation of the secondary antibody and DAB staining.

Please note: All products are "FOR RESEARCH USE ONLY AND ARE NOT INTENDED FOR DIAGNOSTIC OR THERAPEUTIC USE"

Our Abpromise to you: Quality guaranteed and expert technical support

- Replacement or refund for products not performing as stated on the datasheet
- Valid for 12 months from date of delivery
- Response to your inquiry within 24 hours
- We provide support in Chinese, English, French, German, Japanese and Spanish
- Extensive multi-media technical resources to help you
- We investigate all quality concerns to ensure our products perform to the highest standards

If the product does not perform as described on this datasheet, we will offer a refund or replacement. For full details of the Abpromise, please visit <https://www.abcam.com/abpromise> or contact our technical team.

Terms and conditions

- Guarantee only valid for products bought direct from Abcam or one of our authorized distributors