

## Product datasheet

# Anti-C8orf45 antibody ab104317

1 Image

### Overview

<b>Product name</b>	Anti-C8orf45 antibody
<b>Description</b>	Rabbit polyclonal to C8orf45
<b>Host species</b>	Rabbit
<b>Tested applications</b>	<b>Suitable for:</b> WB
<b>Species reactivity</b>	<b>Reacts with:</b> Human <b>Predicted to work with:</b> Mouse, Rat, Rabbit, Horse, Guinea pig, Cow, Cat, Dog, Pig
<b>Immunogen</b>	Synthetic peptide designed within residues: IQAGSALLAK GGICFIGDLA SHKDKLEQL QTVLESRSIT VYIPGKKFGE, corresponding to internal sequence amino acids 395 - 444 of Human C8orf45 (NP_775789). <a href="#">Run BLAST with ExPASy</a> <a href="#">Run BLAST with NCBI</a>
<b>Positive control</b>	Fetal heart lysate

### Properties

<b>Form</b>	Liquid
<b>Storage instructions</b>	Shipped at 4°C. Store at +4°C short term (1-2 weeks). Upon delivery aliquot. Store at -20°C long term.
<b>Storage buffer</b>	Preservative: None Constituents: PBS
<b>Purity</b>	Immunogen affinity purified
<b>Clonality</b>	Polyclonal
<b>Isotype</b>	IgG

### Applications

Our [Abpromise guarantee](#) covers the use of **ab104317** in the following tested applications.

The application notes include recommended starting dilutions; optimal dilutions/concentrations should be determined by the end user.

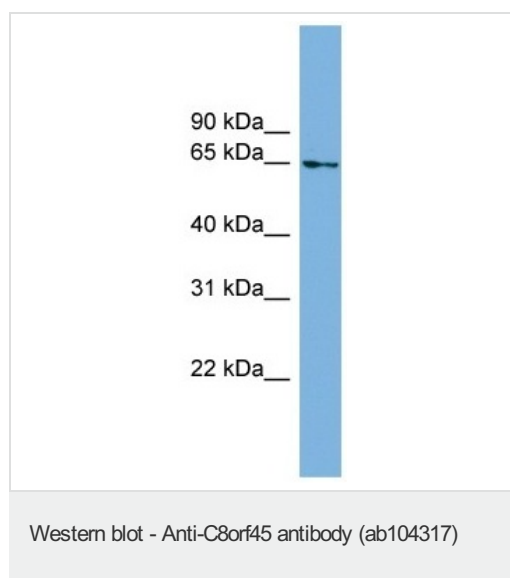
Application	Abreviews	Notes
-------------	-----------	-------

Application	Abreviews	Notes
WB		Use a concentration of 1 µg/ml. Predicted molecular weight: 76 kDa. Good results were obtained when blocked with 5% non-fat dry milk in 0.05% PBS-T.

## Target

**Relevance** C8orf45 is an uncharacterized protein.

## Images



Anti-C8orf45 antibody (ab104317) at 1 µg/ml  
+ Human fetal heart lysate at 10 µg

**Predicted band size:** 76 kDa

12% SDS PAGE

**Please note:** All products are "FOR RESEARCH USE ONLY AND ARE NOT INTENDED FOR DIAGNOSTIC OR THERAPEUTIC USE"

## Our Abpromise to you: Quality guaranteed and expert technical support

- Replacement or refund for products not performing as stated on the datasheet
- Valid for 12 months from date of delivery
- Response to your inquiry within 24 hours
- We provide support in Chinese, English, French, German, Japanese and Spanish
- Extensive multi-media technical resources to help you
- We investigate all quality concerns to ensure our products perform to the highest standards

If the product does not perform as described on this datasheet, we will offer a refund or replacement. For full details of the Abpromise, please visit <https://www.abcam.com/abpromise> or contact our technical team.

## Terms and conditions

- Guarantee only valid for products bought direct from Abcam or one of our authorized distributors