

Product datasheet

Anti-RFX1 antibody ab104406

1 Image

Overview

Product name	Anti-RFX1 antibody
Description	Rabbit polyclonal to RFX1
Host species	Rabbit
Tested applications	Suitable for: WB
Species reactivity	Reacts with: Mouse Predicted to work with: Rat, Guinea pig, Dog
Immunogen	Synthetic peptide corresponding to a region within internal sequence amino acids 181-230 (KSGQVSLTVH SAQQVHSAPE RSPVQANNST SKTAGTPAAT VQQLQVHSVQ) of Mouse RFX1 (NP_033081) Run BLAST with ExPASy Run BLAST with NCBI
Positive control	Mouse spleen lysate

Properties

Form	Liquid
Storage instructions	Shipped at 4°C. Upon delivery aliquot and store at -20°C. Avoid repeated freeze / thaw cycles.
Storage buffer	Preservative: None Constituents: 2% Sucrose, PBS
Purity	Immunogen affinity purified
Clonality	Polyclonal
Isotype	IgG

Applications

Our [Abpromise guarantee](#) covers the use of **ab104406** in the following tested applications.

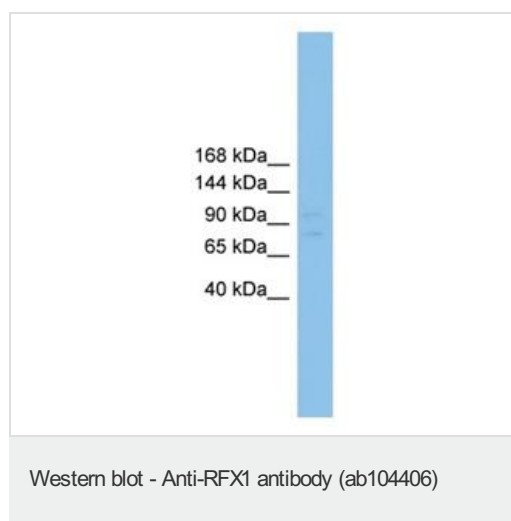
The application notes include recommended starting dilutions; optimal dilutions/concentrations should be determined by the end user.

Application	Abreviews	Notes
WB		Use a concentration of 0.25 µg/ml. Predicted molecular weight: 104 kDa. Good results were obtained when blocked with 5% non-fat dry milk in 0.05% PBS-T.

Target

Function	Regulatory factor essential for MHC class II genes expression. Binds to the X boxes of MHC class II genes. Also binds to an inverted repeat (ENH1) required for hepatitis B virus genes expression and to the most upstream element (alpha) of the RPL30 promoter.
Sequence similarities	Belongs to the RFX family. Contains 1 RFX-type winged-helix DNA-binding domain.
Cellular localization	Nucleus.

Images



Anti-RFX1 antibody (ab104406) at 0.25 μ g/ml
+ Mouse spleen lysate at 10 μ g

Predicted band size: 104 kDa

Gel concentration: 6-18%.

Please note: All products are "FOR RESEARCH USE ONLY AND ARE NOT INTENDED FOR DIAGNOSTIC OR THERAPEUTIC USE"

Our Abpromise to you: Quality guaranteed and expert technical support

- Replacement or refund for products not performing as stated on the datasheet
- Valid for 12 months from date of delivery
- Response to your inquiry within 24 hours
- We provide support in Chinese, English, French, German, Japanese and Spanish
- Extensive multi-media technical resources to help you
- We investigate all quality concerns to ensure our products perform to the highest standards

If the product does not perform as described on this datasheet, we will offer a refund or replacement. For full details of the Abpromise, please visit <https://www.abcam.com/abpromise> or contact our technical team.

Terms and conditions

- Guarantee only valid for products bought direct from Abcam or one of our authorized distributors