

Product datasheet

Anti-PHLDA1 antibody ab104661

1 Image

Overview

| | |
|----------------------------|--|
| Product name | Anti-PHLDA1 antibody |
| Description | Rabbit polyclonal to PHLDA1 |
| Host species | Rabbit |
| Tested applications | Suitable for: WB |
| Species reactivity | Reacts with: Human Predicted to work with: Mouse, Rat, Rabbit, Horse, Guinea pig, Cow, Cat, Dog |
| Immunogen | Synthetic peptide corresponding to a region within C terminal amino acids 290-339 (LAVKSTRQKQ QHLVQQQPPS QPQPQPQLQP QPQPQPQPQP QPQSQPQPQP) of Human PHLDA1 (NP_031376). Run BLAST with ExPASy Run BLAST with NCBI |
| Positive control | Human placenta lysate |

Properties

| | |
|-----------------------------|--|
| Form | Liquid |
| Storage instructions | Shipped at 4°C. Upon delivery aliquot and store at -20°C. Avoid repeated freeze / thaw cycles. |
| Storage buffer | Preservative: 0.09% Sodium azide Constituents: 2% Sucrose, PBS |
| Purity | Immunogen affinity purified |
| Clonality | Polyclonal |
| Isotype | IgG |

Applications

Our [Abpromise guarantee](#) covers the use of **ab104661** in the following tested applications.

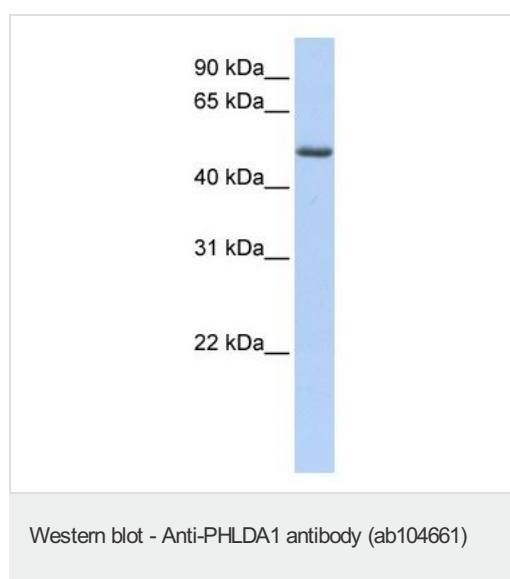
The application notes include recommended starting dilutions; optimal dilutions/concentrations should be determined by the end user.

| Application | Abreviews | Notes |
|-------------|-----------|--|
| WB | | Use a concentration of 1 µg/ml. Predicted molecular weight: 45 kDa. Good results were obtained when blocked with 5% non-fat dry milk in 0.05% PBS-T. |

Target

| | |
|------------------------------|---|
| Function | Seems to be involved in regulation of apoptosis. May be involved in detachment-mediated programmed cell death. May mediate apoptosis during neuronal development. May be involved in regulation of anti-apoptotic effects of IGF1. May be involved in translational regulation. |
| Tissue specificity | Widely expressed with highest levels in pancreas. Strongly expressed by benign melanocytic nevi, and progressively reduced expressed in primary and metastatic melanomas (at protein level). |
| Sequence similarities | Contains 1 PH domain. |
| Cellular localization | Cytoplasm. Cytoplasmic vesicle. Nucleus, nucleolus. Colocalizes with intracellular vesicles. |

Images



Anti-PHLDA1 antibody (ab104661) at 1 μ g/ml + Human placenta lysate at 10 μ g

Predicted band size: 45 kDa

Gel concentration: 12%

Please note: All products are "FOR RESEARCH USE ONLY AND ARE NOT INTENDED FOR DIAGNOSTIC OR THERAPEUTIC USE"

Our Abpromise to you: Quality guaranteed and expert technical support

- Replacement or refund for products not performing as stated on the datasheet
- Valid for 12 months from date of delivery
- Response to your inquiry within 24 hours
- We provide support in Chinese, English, French, German, Japanese and Spanish
- Extensive multi-media technical resources to help you
- We investigate all quality concerns to ensure our products perform to the highest standards

If the product does not perform as described on this datasheet, we will offer a refund or replacement. For full details of the Abpromise, please visit <https://www.abcam.com/abpromise> or contact our technical team.

Terms and conditions

- Guarantee only valid for products bought direct from Abcam or one of our authorized distributors