

Product datasheet

Anti-SP6 antibody ab105652

★★★★☆ 1 Abreviews 2 Images

Overview

Product name	Anti-SP6 antibody
Description	Rabbit polyclonal to SP6
Host species	Rabbit
Tested applications	Suitable for: IHC-P, WB
Species reactivity	Reacts with: Rat, Human Predicted to work with: Mouse, Rabbit, Horse, Guinea pig, Cow, Cat, Dog
Immunogen	Synthetic peptide corresponding to a region within C terminal amino acids 327 - 376 (DHLAKHMKTH EGAKEEAAGA ASGEGKAGGA VEPPGGKGR EAEGSVAPSN) of Human SP6 (NP_954871). Run BLAST with ExPASy Run BLAST with NCBI
Positive control	Jurkat cell lysate

Properties

Form	Liquid
Storage instructions	Shipped at 4°C. Upon delivery aliquot and store at -20°C. Avoid repeated freeze / thaw cycles.
Storage buffer	Preservative: None Constituents: 2% Sucrose, PBS
Purity	Immunogen affinity purified
Clonality	Polyclonal
Isotype	IgG

Applications

Our [Abpromise guarantee](#) covers the use of **ab105652** in the following tested applications.

The application notes include recommended starting dilutions; optimal dilutions/concentrations should be determined by the end user.

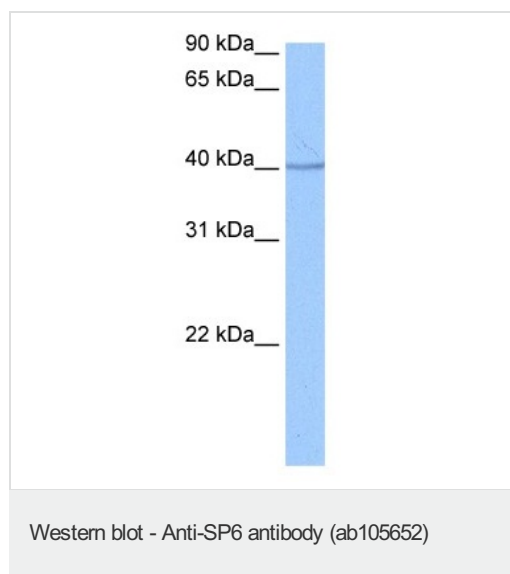
Application	Abreviews	Notes
IHC-P	★★★★☆	1/100. Perform heat mediated antigen retrieval via the microwave method before commencing with IHC staining protocol.

Application	Abreviews	Notes
WB		Use a concentration of 0.5 µg/ml. Predicted molecular weight: 40 kDa. Good results were obtained when blocked with 5% non-fat dry milk in 0.05% PBS-T.

Target

Function	Promotes cell proliferation.
Tissue specificity	Ubiquitous.
Sequence similarities	Belongs to the Sp1 C2H2-type zinc-finger protein family. Contains 3 C2H2-type zinc fingers.
Cellular localization	Nucleus.

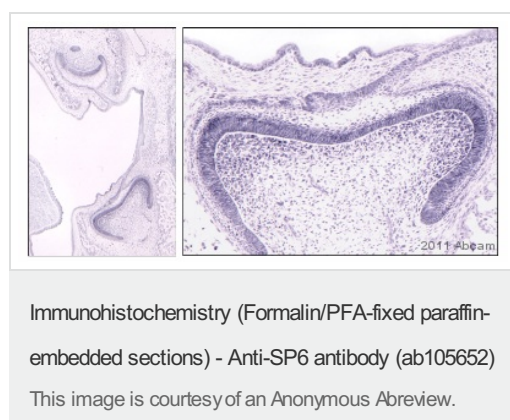
Images



Anti-SP6 antibody (ab105652) at 0.5 µg/ml +
Jurkat cell lysate at 10 µg

Predicted band size: 40 kDa

Gel concentration: 12%



ab105652 staining SP6 in Rat dental epithelium in tooth germ and hair follicles by Immunohistochemistry (Formalin/PFA-fixed paraffin-embedded tissue sections). The sections were fixed in 0.01M periodic acid, 0.075M lysine, 2% paraformaldehyde and subjected to Heat-mediated antigen retrieval by microwave with 0.01% citric acid prior to blocking with 10% serum for 1 hour at room temperature. The primary antibody was diluted 1/100 in 1%BSA/PBS and incubated with the sample for 12 hours. Antibody was detected by an ABC method using HRP-staining.

Please note: All products are "FOR RESEARCH USE ONLY AND ARE NOT INTENDED FOR DIAGNOSTIC OR THERAPEUTIC USE"

Our Abpromise to you: Quality guaranteed and expert technical support

- Replacement or refund for products not performing as stated on the datasheet
- Valid for 12 months from date of delivery
- Response to your inquiry within 24 hours

- We provide support in Chinese, English, French, German, Japanese and Spanish
- Extensive multi-media technical resources to help you
- We investigate all quality concerns to ensure our products perform to the highest standards

If the product does not perform as described on this datasheet, we will offer a refund or replacement. For full details of the Abpromise, please visit <https://www.abcam.com/abpromise> or contact our technical team.

Terms and conditions

- Guarantee only valid for products bought direct from Abcam or one of our authorized distributors