


## Product datasheet

# Anti-Transglutaminase 6 antibody ab105725

1 Image

### Overview

<b>Product name</b>	Anti-Transglutaminase 6 antibody
<b>Description</b>	Rabbit polyclonal to Transglutaminase 6
<b>Host species</b>	Rabbit
<b>Tested applications</b>	<b>Suitable for:</b> WB
<b>Species reactivity</b>	<b>Reacts with:</b> Human <b>Predicted to work with:</b> Mouse, Rat, Rabbit, Horse, Guinea pig, Cow, Cat, Dog 
<b>Immunogen</b>	Synthetic peptide corresponding to a region within the internal sequence amino acids 418-467 (KKIGRCISTK AVGSDSRVDI TDLYKYPEGS RKERQVYSKA VNRLFGVEAS) of Human Transglutaminase 6 (CAI22900; UniProt ID O95932 isoform 2). <a href="#">Run BLAST with ExPASy</a> <a href="#">Run BLAST with NCBI</a>
<b>Positive control</b>	NTERA2 cell lysate

### Properties

<b>Form</b>	Liquid
<b>Storage instructions</b>	Shipped at 4°C. Upon delivery aliquot and store at -20°C. Avoid repeated freeze / thaw cycles.
<b>Storage buffer</b>	Preservative: None Constituents: 2% Sucrose, PBS
<b>Purity</b>	Immunogen affinity purified
<b>Clonality</b>	Polyclonal
<b>Isotype</b>	IgG

### Applications

Our [Abpromise guarantee](#) covers the use of **ab105725** in the following tested applications.

The application notes include recommended starting dilutions; optimal dilutions/concentrations should be determined by the end user.

Application	Abreviews	Notes
WB		Use a concentration of 0.5 µg/ml. TGM6 has two isoforms- 71 and 79kDa. Good results were obtained when blocked with 5% non-fat dry milk in 0.05% PBS-T.

## Target

### Function

Catalyzes the cross-linking of proteins and the conjugation of polyamines to proteins.

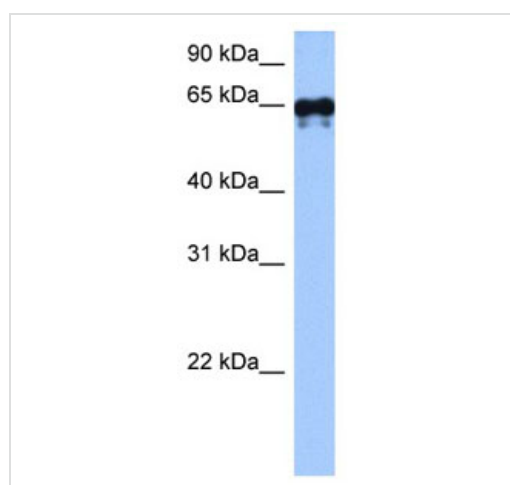
### Involvement in disease

Defects in TGM6 are the cause of spinocerebellar ataxia type 35 (SCA35) [MIM:613908]. A form of spinocerebellar ataxia, a clinically and genetically heterogeneous group of cerebellar disorders. Patients show progressive incoordination of gait and often poor coordination of hands, speech and eye movements, due to degeneration of the cerebellum with variable involvement of the brainstem and spinal cord. SCA35 patients commonly show upper limb involvement and torticollis. There is no cognitive impairment.

### Sequence similarities

Belongs to the transglutaminase superfamily. Transglutaminase family.

## Images



Anti-Transglutaminase 6 antibody (ab105725)  
at 0.5 µg/ml + NTERA2 cell lysate at 10 µg

Gel concentration: 12%

Western blot - Anti-Transglutaminase 6 antibody  
(ab105725)

**Please note:** All products are "FOR RESEARCH USE ONLY AND ARE NOT INTENDED FOR DIAGNOSTIC OR THERAPEUTIC USE"

## Our Abpromise to you: Quality guaranteed and expert technical support

- Replacement or refund for products not performing as stated on the datasheet
- Valid for 12 months from date of delivery
- Response to your inquiry within 24 hours
- We provide support in Chinese, English, French, German, Japanese and Spanish
- Extensive multi-media technical resources to help you
- We investigate all quality concerns to ensure our products perform to the highest standards

If the product does not perform as described on this datasheet, we will offer a refund or replacement. For full details of the Abpromise, please visit <https://www.abcam.com/abpromise> or contact our technical team.

## Terms and conditions

---

- Guarantee only valid for products bought direct from Abcam or one of our authorized distributors