

Product datasheet

Anti-C16orf5 antibody ab106362

3 Images

Overview

<b>Product name</b>	Anti-C16orf5 antibody
<b>Description</b>	Rabbit polyclonal to C16orf5
<b>Host species</b>	Rabbit
<b>Tested applications</b>	<b>Suitable for:</b> ICC/IF, WB, IHC-P
<b>Species reactivity</b>	<b>Reacts with:</b> Mouse, Human
<b>Immunogen</b>	A 19 amino acid synthetic peptide near the center of Human C16orf5 (NP_037531).
<b>Positive control</b>	Human brain lysate; Mouse brain tissue

Properties

<b>Form</b>	Liquid
<b>Storage instructions</b>	Shipped at 4°C. Store at 4°C (stable for up to 12 months).
<b>Storage buffer</b>	Preservative: 0.02% Sodium Azide Constituents: PBS
<b>Purity</b>	Immunogen affinity purified
<b>Clonality</b>	Polyclonal
<b>Isotype</b>	IgG

Applications

Our [Abpromise guarantee](#) covers the use of **ab106362** in the following tested applications.

The application notes include recommended starting dilutions; optimal dilutions/concentrations should be determined by the end user.

Application	Abreviews	Notes
ICC/IF		Use a concentration of 20 µg/ml.
WB		Use a concentration of 0.25 - 0.5 µg/ml. Predicted molecular weight: 22 kDa.
IHC-P		Use a concentration of 2.5 µg/ml.

## Target

### Tissue specificity

Highly expressed in brain. Expressed at lower level in heart, skeletal muscle, kidney, pancreas and liver. Weakly or not expressed in placenta and lung.

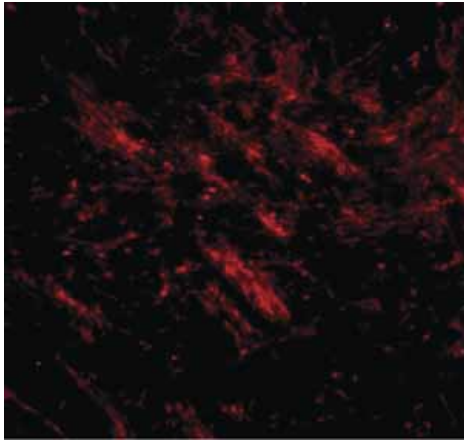
### Sequence similarities

Belongs to the LITAF family.

### Form

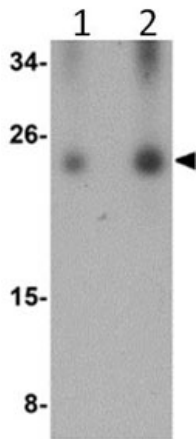
Cellular component nucleus.

## Images



Immunofluorescence of C16orf5 in mouse brain tissue with ab106362 at 20 ug/mL.

Immunocytochemistry/ Immunofluorescence - Anti-C16orf5 antibody (ab106362)



**Lane 1** : Anti-C16orf5 antibody (ab106362) at 0.25 µg/ml

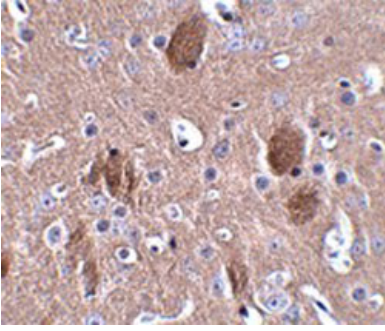
**Lane 2** : Anti-C16orf5 antibody (ab106362) at 0.5 µg/ml

**All lanes** : Human brain lysate

Lysates/proteins at 15 µg per lane.

**Predicted band size:** 22 kDa

Western blot - Anti-C16orf5 antibody (ab106362)



ab106362, at 2.5 µg/ml, staining C16orf5 in  
Mouse brain tissue by Immunohistochemistry.

Immunohistochemistry (Formalin/PFA-fixed paraffin-  
embedded sections) - Anti-C16orf5 antibody  
(ab106362)

**Please note:** All products are "FOR RESEARCH USE ONLY AND ARE NOT INTENDED FOR DIAGNOSTIC OR THERAPEUTIC USE"

### **Our Abpromise to you: Quality guaranteed and expert technical support**

- Replacement or refund for products not performing as stated on the datasheet
- Valid for 12 months from date of delivery
- Response to your inquiry within 24 hours
- We provide support in Chinese, English, French, German, Japanese and Spanish
- Extensive multi-media technical resources to help you
- We investigate all quality concerns to ensure our products perform to the highest standards

If the product does not perform as described on this datasheet, we will offer a refund or replacement. For full details of the Abpromise, please visit <https://www.abcam.com/abpromise> or contact our technical team.

### **Terms and conditions**

- Guarantee only valid for products bought direct from Abcam or one of our authorized distributors