

Product datasheet

Anti-EFHD1 antibody ab106666

★ ★ ★ ★ ★ 1 Abreviews 3 Images

Overview

Product name	Anti-EFHD1 antibody
Description	Rabbit polyclonal to EFHD1
Host species	Rabbit
Specificity	ab106666 is predicted to not cross-react with EFHD2.
Tested applications	Suitable for: WB, ICC/IF
Species reactivity	Reacts with: Mouse, Rat, Human
Immunogen	A 14 amino acid synthetic peptide near the amino terminus of Human EFHD1 (NP_079478)
Positive control	Human spleen tissue lysate. Rat spleen tissue.

Properties

Form	Liquid
Storage instructions	Shipped at 4°C. Store at 4°C (stable for up to 12 months).
Storage buffer	Preservative: 0.02% Sodium Azide Constituents: PBS
Purity	Immunogen affinity purified
Clonality	Polyclonal
Isotype	IgG

Applications

Our [Abpromise guarantee](#) covers the use of **ab106666** in the following tested applications.

The application notes include recommended starting dilutions; optimal dilutions/concentrations should be determined by the end user.

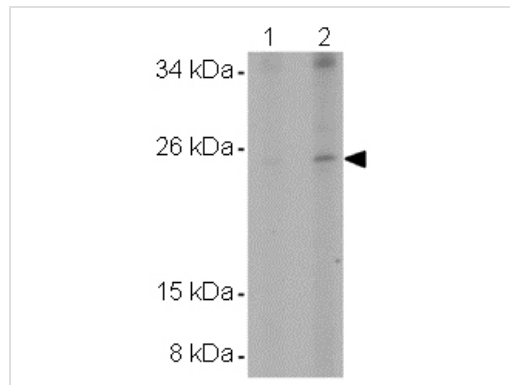
Application	Abreviews	Notes
WB	★ ★ ★ ★ ★	Use a concentration of 2 - 4 µg/ml. Predicted molecular weight: 27 kDa.
ICC/IF		Use a concentration of 5 µg/ml.

Target

Sequence similarities

Contains 2 EF-hand domains.

Images



Western blot - Anti-EFHD1 antibody (ab106666)

Lane 1 : Anti-EFHD1 antibody (ab106666) at

2 $\mu\text{g/ml}$

Lane 2 : Anti-EFHD1 antibody (ab106666) at

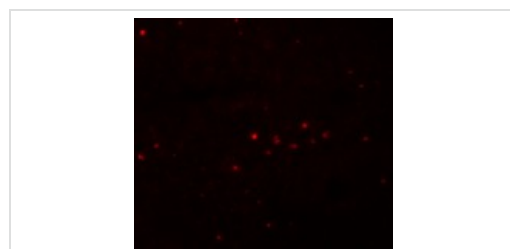
4 $\mu\text{g/ml}$

All lanes : Human spleen tissue lysate

Lysates/proteins at 15 μg per lane.

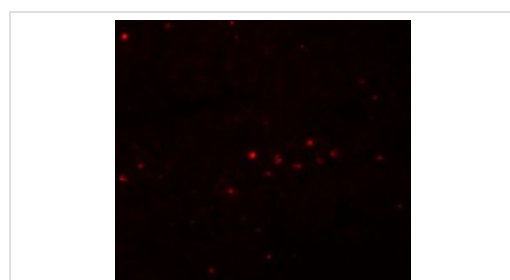
Performed under reducing conditions.

Predicted band size: 27 kDa



Immunocytochemistry/ Immunofluorescence - Anti-EFHD1 antibody (ab106666)

ab106666, at 5 $\mu\text{g/ml}$, staining EFHD1 by immunofluorescence



Immunocytochemistry/ Immunofluorescence - Anti-EFHD1 antibody (ab106666)

Immunofluorescence of EFHD1 in Rat Spleen cells using ab106666 at 20 $\mu\text{g/ml}$.

Please note: All products are "FOR RESEARCH USE ONLY AND ARE NOT INTENDED FOR DIAGNOSTIC OR THERAPEUTIC USE"

Our Abpromise to you: Quality guaranteed and expert technical support

- Replacement or refund for products not performing as stated on the datasheet
- Valid for 12 months from date of delivery
- Response to your inquiry within 24 hours

- We provide support in Chinese, English, French, German, Japanese and Spanish
- Extensive multi-media technical resources to help you
- We investigate all quality concerns to ensure our products perform to the highest standards

If the product does not perform as described on this datasheet, we will offer a refund or replacement. For full details of the Abpromise, please visit <https://www.abcam.com/abpromise> or contact our technical team.

Terms and conditions

- Guarantee only valid for products bought direct from Abcam or one of our authorized distributors