

## Product datasheet

# Anti-BSND antibody ab108150

1 Image

### Overview

<b>Product name</b>	Anti-BSND antibody
<b>Description</b>	Rabbit polyclonal to BSND
<b>Host species</b>	Rabbit
<b>Tested applications</b>	<b>Suitable for:</b> WB
<b>Species reactivity</b>	<b>Reacts with:</b> Human
<b>Immunogen</b>	Synthetic peptide corresponding to a region within internal sequence amino acids 211-260 (PNASPHDREE ACSPQQEPQG CRCPLDRFQD FALIDAPTLTLE DEPQEGQQWE) of Human BSND (NP_476517). <a href="#">Run BLAST with ExPASy</a> <a href="#">Run BLAST with NCBI</a>
<b>Positive control</b>	Human fetal heart lysate

### Properties

<b>Form</b>	Liquid
<b>Storage instructions</b>	Shipped at 4°C. Upon delivery aliquot and store at -20°C. Avoid repeated freeze / thaw cycles.
<b>Storage buffer</b>	Preservative: None Constituents: 2% Sucrose, PBS
<b>Purity</b>	Immunogen affinity purified
<b>Clonality</b>	Polyclonal
<b>Isotype</b>	IgG

### Applications

Our [Abpromise guarantee](#) covers the use of **ab108150** in the following tested applications.

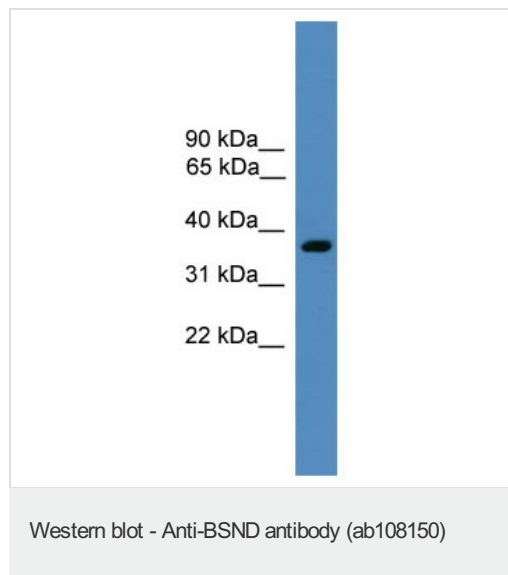
The application notes include recommended starting dilutions; optimal dilutions/concentrations should be determined by the end user.

Application	Abreviews	Notes
WB		Use a concentration of 1 µg/ml. Predicted molecular weight: 35 kDa. Good results were obtained when blocked with 5% non-fat dry milk in 0.05% PBS-T.

## Target

<b>Function</b>	Functions as a beta-subunit for CLCNKA and CLCNKB chloride channels. In the kidney CLCNK/BSND heteromers mediate chloride reabsorption by facilitating its basolateral efflux. In the stria, CLCNK/BSND channels drive potassium secretion by recycling chloride for the basolateral SLC12A2 cotransporter.
<b>Tissue specificity</b>	Expressed primarily in kidney. Expressed in specific nephron segments and in the stria vascularis of the inner ear.
<b>Involvement in disease</b>	Bartter syndrome 4A
<b>Cellular localization</b>	Cell membrane. Cytoplasm. A significant amount also observed intracellularly. Staining in membranes of the renal tubule and of potassium-secreting epithelia of the inner ear is basolateral.

## Images



Anti-BSND antibody (ab108150) at 1 µg/ml +  
Human fetal heart lysate at 10 µg

**Predicted band size:** 35 kDa

Gel concentration: 12%

**Please note:** All products are "FOR RESEARCH USE ONLY AND ARE NOT INTENDED FOR DIAGNOSTIC OR THERAPEUTIC USE"

## Our Abpromise to you: Quality guaranteed and expert technical support

- Replacement or refund for products not performing as stated on the datasheet
- Valid for 12 months from date of delivery
- Response to your inquiry within 24 hours
- We provide support in Chinese, English, French, German, Japanese and Spanish
- Extensive multi-media technical resources to help you
- We investigate all quality concerns to ensure our products perform to the highest standards

If the product does not perform as described on this datasheet, we will offer a refund or replacement. For full details of the Abpromise, please visit <https://www.abcam.com/abpromise> or contact our technical team.

## Terms and conditions

---

- Guarantee only valid for products bought direct from Abcam or one of our authorized distributors