

Product datasheet

Anti-ASAP1 / DDEF1 antibody ab11011

3 References 1 Image

Overview

<b>Product name</b>	Anti-ASAP1 / DDEF1 antibody
<b>Description</b>	Rabbit polyclonal to ASAP1 / DDEF1
<b>Host species</b>	Rabbit
<b>Tested applications</b>	<b>Suitable for:</b> WB, IHC-P, ICC/IF
<b>Species reactivity</b>	<b>Reacts with:</b> Mouse, Cow, Human
<b>Immunogen</b>	Synthetic peptide conjugated to KLH, corresponding to amino acids 1128-1147 of Mouse CENTB4.
<b>General notes</b>	Working dilution samples should be discarded if not used within 12 hours. The antibody is stable for at least 6 months when stored appropriately.

Properties

<b>Form</b>	Liquid
<b>Storage instructions</b>	Shipped at 4°C. Upon delivery aliquot and store at -20°C or -80°C. Avoid repeated freeze / thaw cycles.
<b>Storage buffer</b>	Preservative: 15mM Sodium Azide Constituents: 0.01M PBS, pH 7.4
<b>Purity</b>	IgG fraction
<b>Purification notes</b>	Whole antiserum is fractionated and then further purified by ion-exchange chromatography.
<b>Clonality</b>	Polyclonal
<b>Isotype</b>	IgG

Applications

Our [Abpromise guarantee](#) covers the use of **ab11011** in the following tested applications.

The application notes include recommended starting dilutions; optimal dilutions/concentrations should be determined by the end user.

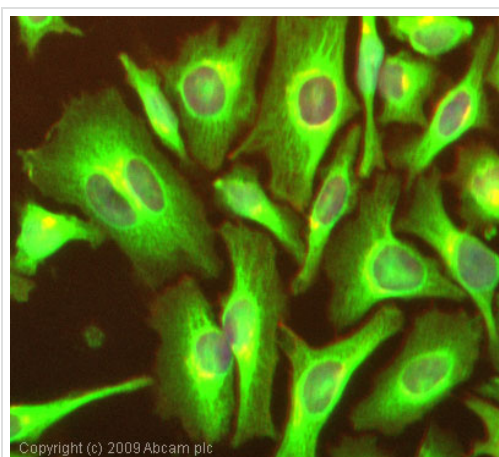
Application	Abreviews	Notes
WB		1/2500. Predicted molecular weight: 130 kDa.

Application	Abreviews	Notes
IHC-P		Use at an assay dependent concentration. PubMed: 18519696
ICC/IF		1/1000.

## Target

<b>Function</b>	Possesses phosphatidylinositol 4,5-biphosphate-dependent GTPase-activating protein activity for ARF1 (ADP ribosylation factor 1) and ARF5 and a lesser activity towards ARF6. May coordinate membrane trafficking with cell growth or actin cytoskeleton remodeling by binding to both SRC and PIP2. May function as a signal transduction protein involved in the differentiation of fibroblasts into adipocytes and possibly other cell types (By similarity). Plays a role in ciliogenesis.
<b>Sequence similarities</b>	Contains 2 ANK repeats. Contains 1 Arf-GAP domain. Contains 1 PH domain. Contains 1 SH3 domain.
<b>Domain</b>	The PH domain most probably contributes to the phosphoinositide-dependent regulation of ADP ribosylation factors.
<b>Post-translational modifications</b>	Phosphorylated on tyrosine residues by SRC.
<b>Cellular localization</b>	Cytoplasm. Membrane. Predominantly cytoplasmic (By similarity). Partially membrane-associated.

## Images



Immunocytochemistry/ Immunofluorescence - Anti-ASAP1 / DDEF1 antibody (ab11011)

ICC/IF image of ab11011 stained HeLa cells. The cells were 4% formaldehyde fixed (10 min) and then incubated in 1%BSA / 10% normal goat serum / 0.3M glycine in 0.1% PBS-Tween for 1h to permeabilise the cells and block non-specific protein-protein interactions. The cells were then incubated with the antibody (ab11011, 1µg/ml) overnight at +4°C. The secondary antibody (green) was Alexa Fluor® 488 goat anti-rabbit IgG (H+L) used at a 1/1000 dilution for 1h. Alexa Fluor® 594 WGA was used to label plasma membranes (red) at a 1/200 dilution for 1h. DAPI was used to stain the cell nuclei (blue) at a concentration of 1.43µM.

**Please note:** All products are "FOR RESEARCH USE ONLY AND ARE NOT INTENDED FOR DIAGNOSTIC OR THERAPEUTIC USE"

## **Our Abpromise to you: Quality guaranteed and expert technical support**

---

- Replacement or refund for products not performing as stated on the datasheet
- Valid for 12 months from date of delivery
- Response to your inquiry within 24 hours
  
- We provide support in Chinese, English, French, German, Japanese and Spanish
- Extensive multi-media technical resources to help you
- We investigate all quality concerns to ensure our products perform to the highest standards

If the product does not perform as described on this datasheet, we will offer a refund or replacement. For full details of the Abpromise, please visit <https://www.abcam.com/abpromise> or contact our technical team.

## **Terms and conditions**

---

- Guarantee only valid for products bought direct from Abcam or one of our authorized distributors