

Product datasheet

Anti-PCTAIRE1 antibody [G6.1] ab11043

1 Image

Overview

Product name	Anti-PCTAIRE1 antibody [G6.1]
Description	Mouse monoclonal [G6.1] to PCTAIRE1
Host species	Mouse
Tested applications	Suitable for: WB, IP
Species reactivity	Reacts with: Human, Xenopus laevis Predicted to work with: Mammals
Immunogen	Synthetic peptide: DRMKKIKRQLSMTLRGGRC , corresponding to N terminal amino acids 2-19 of Human PCTAIRE1. Run BLAST with Run BLAST with

Properties

Form	Liquid
Storage instructions	Shipped at 4°C. Upon delivery aliquot and store at -20°C or -80°C. Avoid repeated freeze / thaw cycles.
Storage buffer	Preservative: None Constituents: PBS
Purity	Protein A purified
Clonality	Monoclonal
Clone number	G6.1
Myeloma	Sp2/0
Isotype	IgG2b

Applications

Our [Abpromise guarantee](#) covers the use of **ab11043** in the following tested applications.

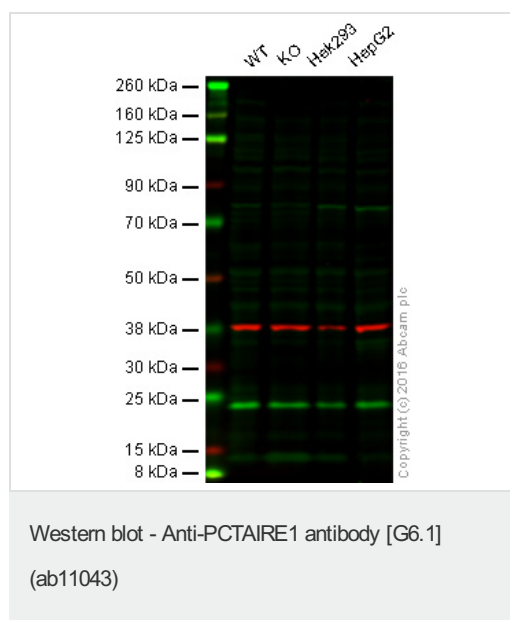
The application notes include recommended starting dilutions; optimal dilutions/concentrations should be determined by the end user.

Application	Abreviews	Notes
WB		Use a concentration of 2.5 µg/ml. Predicted molecular weight: 60 kDa.
IP		Use a concentration of 2.5 µg/ml.

Target

Function	May play a role in signal transduction cascades in terminally differentiated cells.
Sequence similarities	Belongs to the protein kinase superfamily. CMGC Ser/Thr protein kinase family. CDC2/CDKX subfamily. Contains 1 protein kinase domain.

Images



Lane 1: Wild-type HAP1 cell lysate (20 µg)

Lane 2: PCTAIRE1 knockout HAP1 cell lysate (20 µg)

Lane 3: HEK293 cell lysate (20 µg)

Lane 4: HepG2 cell lysate (20 µg)

Lanes 1 - 4: Merged signal (red and green).
Green - ab11043 n/a. Red - loading control, [ab181602](#), observed at 37 kDa.

ab11043 was shown not to react with PCTAIRE1 when PCTAIRE1 knockout samples were used. Wild-type and PCTAIRE1 knockout samples were subjected to SDS-PAGE. Ab11043 and [ab181602](#) (loading control to GAPDH) were diluted at 2.5 µg/ml and 1/10,000 dilution respectively and incubated overnight at 4°C. Blots were developed with IRDye® 800CW Goat anti-Mouse IgG (H + L) and IRDye® 680 Goat anti-Rabbit IgG (H + L) secondary antibodies at 1/10,000 dilution for 1 hour at room temperature before imaging.

Please note: All products are "FOR RESEARCH USE ONLY AND ARE NOT INTENDED FOR DIAGNOSTIC OR THERAPEUTIC USE"

Our Abpromise to you: Quality guaranteed and expert technical support

- Replacement or refund for products not performing as stated on the datasheet
- Valid for 12 months from date of delivery
- Response to your inquiry within 24 hours

- We provide support in Chinese, English, French, German, Japanese and Spanish
- Extensive multi-media technical resources to help you
- We investigate all quality concerns to ensure our products perform to the highest standards

If the product does not perform as described on this datasheet, we will offer a refund or replacement. For full details of the Abpromise, please visit <https://www.abcam.com/abpromise> or contact our technical team.

Terms and conditions

- Guarantee only valid for products bought direct from Abcam or one of our authorized distributors