

Product datasheet

Anti-KMT6 / EZH2 antibody [EPR1409(2)] ab110646

RabMAb[®]

[3 References](#) [2 Images](#)

Overview

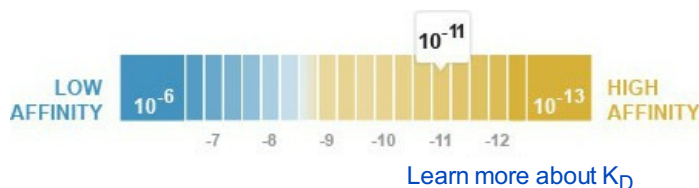
Product name	Anti-KMT6 / EZH2 antibody [EPR1409(2)]
Description	Rabbit monoclonal [EPR1409(2)] to KMT6 / EZH2
Host species	Rabbit
Tested applications	Suitable for: WB Unsuitable for: Flow Cyt, ICC, IHC-P or IP
Species reactivity	Reacts with: Human
Immunogen	A synthetic peptide corresponding to residues in Human KMT6/ EZH2.
Positive control	HeLa, MCF7 and K562 cell lysates
General notes	Mouse, Rat: We have preliminary internal testing data to indicate this antibody may not react with these species. Please contact us for more information.

Our RabMAb[®] technology is a patented hybridoma-based technology for making rabbit monoclonal antibodies. For details on our patents, please refer to [RabMAb[®] patents](#)

This product is a recombinant rabbit monoclonal antibody.

Properties

Form	Liquid
Storage instructions	Shipped at 4°C. Store at -20°C. Stable for 12 months at -20°C.
Dissociation constant (K_D)	K _D = 7.52 x 10 ⁻¹¹ M



Storage buffer	PBS 49%, Sodium azide 0.01%, Glycerol 50%, BSA 0.05%
Purity	Tissue culture supernatant
Clonality	Monoclonal

Clone number	EPR1409(2)
Isotype	IgG

Applications

Our [Abpromise guarantee](#) covers the use of **ab110646** in the following tested applications.

The application notes include recommended starting dilutions; optimal dilutions/concentrations should be determined by the end user.

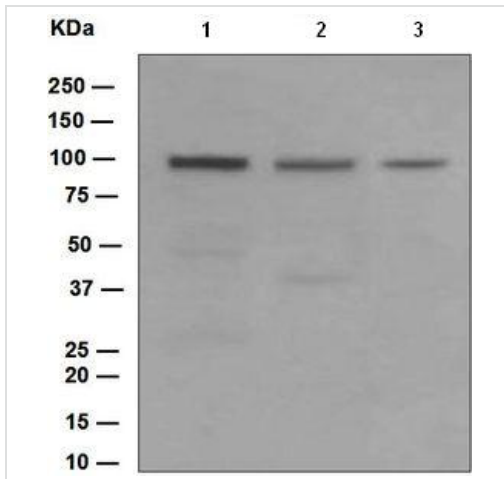
Application	Abreviews	Notes
WB		1/1000 - 1/10000. Detects a band of approximately 100 kDa (predicted molecular weight: 85 kDa).

Application notes Is unsuitable for Flow Cyt, ICC, IHC-P or IP.

Target

Function	Polycomb group (PcG) protein. Catalytic subunit of the PRC2/EED-EZH2 complex, which methylates 'Lys-9' and 'Lys-27' of histone H3, leading to transcriptional repression of the affected target gene. Able to mono-, di- and trimethylate 'Lys-27' of histone H3 to form H3K27me1, H3K27me2 and H3K27me3, respectively. Compared to EZH2-containing complexes, it is more abundant in embryonic stem cells and plays a major role in forming H3K27me3, which is required for embryonic stem cell identity and proper differentiation. The PRC2/EED-EZH2 complex may also serve as a recruiting platform for DNA methyltransferases, thereby linking two epigenetic repression systems. Genes repressed by the PRC2/EED-EZH2 complex include HOXC8, HOXA9, MYT1, CDKN2A and retinoic acid target genes.
Tissue specificity	Expressed in many tissues. Overexpressed in numerous tumor types including carcinomas of the breast, colon, larynx, lymphoma and testis.
Sequence similarities	Belongs to the histone-lysine methyltransferase family. EZ subfamily. Contains 1 SET domain.
Developmental stage	Expression decreases during senescence of embryonic fibroblasts (HEFs). Expression peaks at the G1/S phase boundary.
Post-translational modifications	Phosphorylated by AKT1. Phosphorylation by AKT1 reduces methyltransferase activity.
Cellular localization	Nucleus.

Images



Western blot - Anti-KMT6 / EZH2 antibody
[EPR1409(2)] (ab110646)

All lanes : Anti-KMT6 / EZH2 antibody
[EPR1409(2)] (ab110646) at 1/1000 dilution

Lane 1 : HeLa cell lysates

Lane 2 : MCF7 cell lysates

Lane 3 : K562 cell lysates

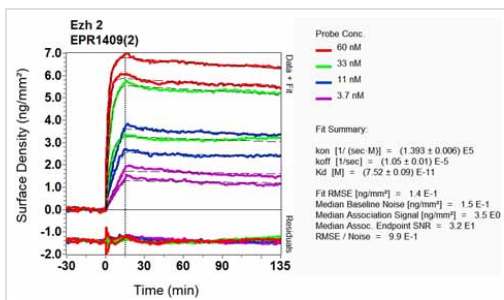
Lysates/proteins at 10 µg per lane.

Secondary

All lanes : HRP labelled goat anti-rabbit at
1/2000 dilution

Predicted band size: 85 kDa

Observed band size: 100 kDa



Other - Anti-KMT6 / EZH2 antibody [EPR1409(2)]
(ab110646)

Equilibrium dissociation constant (K_D)

Learn more about K_D

[Click here to learn more about \$K_D\$](#)

Please note: All products are "FOR RESEARCH USE ONLY AND ARE NOT INTENDED FOR DIAGNOSTIC OR THERAPEUTIC USE"

Our Abpromise to you: Quality guaranteed and expert technical support

- Replacement or refund for products not performing as stated on the datasheet
- Valid for 12 months from date of delivery
- Response to your inquiry within 24 hours
- We provide support in Chinese, English, French, German, Japanese and Spanish
- Extensive multi-media technical resources to help you
- We investigate all quality concerns to ensure our products perform to the highest standards

If the product does not perform as described on this datasheet, we will offer a refund or replacement. For full details of the Abpromise, please visit <https://www.abcam.com/abpromise> or contact our technical team.

Terms and conditions

- Guarantee only valid for products bought direct from Abcam or one of our authorized distributors