


## Product datasheet

# Anti-MAP3K4 antibody ab110891

1 Image

### Overview

|                            |   |
|----------------------------|---|
| <b>Product name</b>        | Anti-MAP3K4 antibody  |
| <b>Description</b>         | Rabbit polyclonal to MAP3K4   |
| <b>Host species</b>        | Rabbit  |
| <b>Tested applications</b> | <b>Suitable for:</b> IHC-P  |
| <b>Species reactivity</b>  | <b>Reacts with:</b> Human<br><b>Predicted to work with:</b> Mouse  |
| <b>Immunogen</b>           | Synthetic peptide derived from an internal sequence at C-terminal of Human MAP3K4.  |
| <b>Positive control</b>    | Human heart tissue  |

### Properties

|                             |  |
|-----------------------------|--|
| <b>Form</b>                 | Liquid   |
| <b>Storage instructions</b> | Shipped at 4°C. Store at -20°C. Stable for 12 months at -20°C.   |
| <b>Storage buffer</b>       | pH: 7.40<br>Preservative: 0.02% Sodium azide<br>Constituents: PBS, 0.88% Sodium chloride, 50% Glycerol<br>Note: PBS (without Mg <sup>2+</sup> and Ca <sup>2+</sup> ) |
| <b>Purity</b>               | Immunogen affinity purified  |
| <b>Purification notes</b>   | ab110891 was affinity-purified from rabbit antiserum by affinity-chromatography using epitope-specific immunogen.  |
| <b>Clonality</b>            | Polyclonal   |
| <b>Isotype</b>              | IgG  |

### Applications

Our [Abpromise guarantee](#) covers the use of **ab110891** in the following tested applications.

The application notes include recommended starting dilutions; optimal dilutions/concentrations should be determined by the end user.

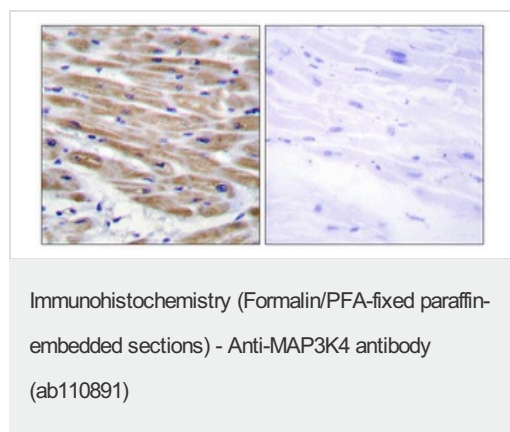
| Application | Abreviews | Notes |
|-------------|-----------|-------|
|-------------|-----------|-------|

| Application | Abreviews | Notes  |
|-------------|-----------|--|
| IHC-P       |           | 1/50 - 1/100. Perform heat mediated antigen retrieval with citrate buffer pH 6 before commencing with IHC staining protocol. |

## Target

|                              |  |
|------------------------------|--|
| <b>Function</b>              | Component of a protein kinase signal transduction cascade. Activates the CSBP2, P38 and JNK MAPK pathways, but not the ERK pathway. Specifically phosphorylates and activates MAP2K4 and MAP2K6. |
| <b>Tissue specificity</b>    | Expressed at high levels in heart, placenta, skeletal muscle and pancreas, and at lower levels in other tissues.   |
| <b>Sequence similarities</b> | Belongs to the protein kinase superfamily. STE Ser/Thr protein kinase family. MAP kinase kinase kinase subfamily.<br>Contains 1 protein kinase domain.   |
| <b>Cellular localization</b> | Cytoplasm > perinuclear region. Localized in perinuclear vesicular-like structures, probably Golgi-associated vesicles.  |

## Images



ab110891, at a 1/50 dilution, staining MAP3K4 in paraffin-embedded Human heart tissue by Immunohistochemistry. The image on the right is treated with the synthesized peptide.

**Please note:** All products are "FOR RESEARCH USE ONLY AND ARE NOT INTENDED FOR DIAGNOSTIC OR THERAPEUTIC USE"

## Our Abpromise to you: Quality guaranteed and expert technical support

- Replacement or refund for products not performing as stated on the datasheet
- Valid for 12 months from date of delivery
- Response to your inquiry within 24 hours
- We provide support in Chinese, English, French, German, Japanese and Spanish
- Extensive multi-media technical resources to help you
- We investigate all quality concerns to ensure our products perform to the highest standards

If the product does not perform as described on this datasheet, we will offer a refund or replacement. For full details of the Abpromise, please visit <https://www.abcam.com/abpromise> or contact our technical team.

## Terms and conditions

---

- Guarantee only valid for products bought direct from Abcam or one of our authorized distributors