

Product datasheet

Anti-SLC25A12 antibody ab111415

1 Image

Overview

Product name	Anti-SLC25A12 antibody
Description	Rabbit polyclonal to SLC25A12
Host species	Rabbit
Tested applications	Suitable for: IHC-P
Species reactivity	Reacts with: Human
Immunogen	Synthetic peptide derived from an internal sequence of the Human SLC25A12 protein (O75746).
Positive control	Human prostate carcinoma tissue.

Properties

Form	Liquid
Storage instructions	Shipped at 4°C. Store at -20°C. Stable for 12 months at -20°C.
Storage buffer	pH: 7.40 Preservative: 0.02% Sodium azide Constituents: PBS, 50% Glycerol, 0.88% Sodium chloride Note: PBS without calcium and magnesium
Purity	Immunogen affinity purified
Purification notes	Affinity-purified from rabbit antiserum by affinity-chromatography using epitope-specific immunogen.
Clonality	Polyclonal
Isotype	IgG

Applications

Our [Abpromise guarantee](#) covers the use of **ab111415** in the following tested applications.

The application notes include recommended starting dilutions; optimal dilutions/concentrations should be determined by the end user.

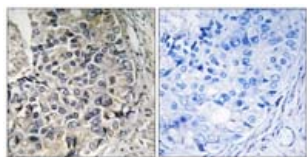
Application	Abreviews	Notes
-------------	-----------	-------

Application	Abreviews	Notes
IHC-P		1/50 - 1/100. Perform heat mediated antigen retrieval with citrate buffer pH 6 before commencing with IHC staining protocol.

Target

Function	Calcium-dependent mitochondrial aspartate and glutamate carrier. May have a function in the urea cycle.
Tissue specificity	High levels in heart and skeletal muscle, low in brain and very low in kidney.
Involvement in disease	Defects in SLC25A12 are the cause of aspartate-glutamate carrier 1 deficiency (AGC1D) [MIM:612949]; also called global cerebral hypomyelination. This syndrome consists of a child severe psychomotor retardation, hypotonia and hypomyelination of the central nervous system.
Sequence similarities	Belongs to the mitochondrial carrier family. Contains 4 EF-hand domains. Contains 3 Solcar repeats.
Cellular localization	Mitochondrion inner membrane.

Images



Immunohistochemistry (Formalin/PFA-fixed paraffin-embedded sections) - Anti-SLC25A12 antibody (ab111415)

Immunohistochemistry analysis of paraffin-embedded human prostate carcinoma tissue, using SLC25A12 Antibody (ab111415). The picture on the right is treated with the synthesized peptide.

Please note: All products are "FOR RESEARCH USE ONLY AND ARE NOT INTENDED FOR DIAGNOSTIC OR THERAPEUTIC USE"

Our Abpromise to you: Quality guaranteed and expert technical support

- Replacement or refund for products not performing as stated on the datasheet
- Valid for 12 months from date of delivery
- Response to your inquiry within 24 hours
- We provide support in Chinese, English, French, German, Japanese and Spanish
- Extensive multi-media technical resources to help you
- We investigate all quality concerns to ensure our products perform to the highest standards

If the product does not perform as described on this datasheet, we will offer a refund or replacement. For full details of the Abpromise, please visit <https://www.abcam.com/abpromise> or contact our technical team.

Terms and conditions

- Guarantee only valid for products bought direct from Abcam or one of our authorized distributors