

Product datasheet

Anti-Integrin alpha 4 antibody [R1-2] (Phycoerythrin) ab112440

[1 Image](#)

Overview

Product name	Anti-Integrin alpha 4 antibody [R1-2] (Phycoerythrin)
Description	Rat monoclonal [R1-2] to Integrin alpha 4 (Phycoerythrin)
Host species	Rat
Conjugation	Phycoerythrin. Ex: 488nm, Em: 575nm
Tested applications	Suitable for: Flow Cyt
Species reactivity	Reacts with: Mouse
Immunogen	Mouse Peyers Patch HEV binding lymphoma line (TK1).
Positive control	Mouse TK1 cell line (Strains BALB/c, C57BL/6, C3H/He, CBA/J and AKR).

Properties

Form	Liquid
Storage instructions	Shipped at 4°C. Store at +4°C.
Storage buffer	Preservative: 0.02% Sodium azide Constituents: 99% PBS, 0.5% BSA
Purity	Protein G purified
Purification notes	ab112440 was purified from ascitic fluid via Protein G Chromatography.
Clonality	Monoclonal
Clone number	R1-2
Myeloma	P3x63-Ag8.653
Isotype	IgG2b

Applications

Our [Abpromise guarantee](#) covers the use of **ab112440** in the following tested applications.

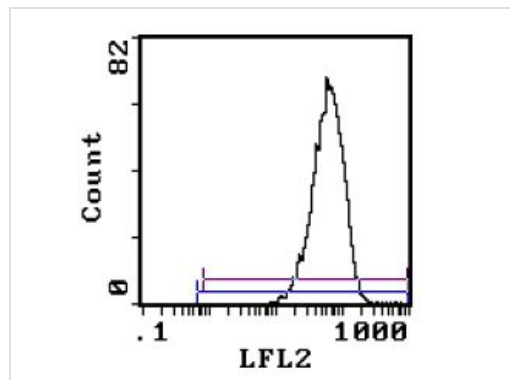
The application notes include recommended starting dilutions; optimal dilutions/concentrations should be determined by the end user.

Application	Abreviews	Notes
Flow Cyt		Use 1µg for 10 ⁶ cells.

Target

Function	Integrins alpha-4/beta-1 (VLA-4) and alpha-4/beta-7 are receptors for fibronectin. They recognize one or more domains within the alternatively spliced CS-1 and CS-5 regions of fibronectin. They are also receptors for VCAM1. Integrin alpha-4/beta-1 recognizes the sequence Q-I-D-S in VCAM1. Integrin alpha-4/beta-7 is also a receptor for MADCAM1. It recognizes the sequence L-D-T in MADCAM1. On activated endothelial cells integrin VLA-4 triggers homotypic aggregation for most VLA-4-positive leukocyte cell lines. It may also participate in cytolytic T-cell interactions with target cells.
Sequence similarities	Belongs to the integrin alpha chain family. Contains 7 FG-GAP repeats.
Domain	The SG1 motif is involved in binding to chondroitin sulfate glycosaminoglycan and cell adhesion.
Post-translational modifications	Phosphorylation on Ser-1027 inhibits PXN binding.
Cellular localization	Membrane.

Images



ab112440 at 1.0 µg/10⁶ cells detecting Integrin alpha 4 in Balb/c Mouse TK1 cell line by Flow Cytometry. 100% more of the cells were stained than in the control (PE Rat IgG2b).

Flow Cytometry - Anti-Integrin alpha 4 antibody [R1-2] (Phycoerythrin) (ab112440)

Please note: All products are "FOR RESEARCH USE ONLY AND ARE NOT INTENDED FOR DIAGNOSTIC OR THERAPEUTIC USE"

Our Abpromise to you: Quality guaranteed and expert technical support

- Replacement or refund for products not performing as stated on the datasheet
- Valid for 12 months from date of delivery
- Response to your inquiry within 24 hours
- We provide support in Chinese, English, French, German, Japanese and Spanish

- Extensive multi-media technical resources to help you
- We investigate all quality concerns to ensure our products perform to the highest standards

If the product does not perform as described on this datasheet, we will offer a refund or replacement. For full details of the Abpromise, please visit <https://www.abcam.com/abpromise> or contact our technical team.

Terms and conditions

- Guarantee only valid for products bought direct from Abcam or one of our authorized distributors