

Product datasheet

Anti-CD45 antibody [IBL-5/25] (FITC) ab112507

1 References 1 Image

Overview

Product name	Anti-CD45 antibody [IBL-5/25] (FITC)
Description	Rat monoclonal [IBL-5/25] to CD45 (FITC)
Host species	Rat
Conjugation	FITC. Ex: 493nm, Em: 528nm
Tested applications	Suitable for: IHC-Fr, IP, Flow Cyt
Species reactivity	Reacts with: Mouse
Immunogen	IL3 dependent mast cells derived from WB- +/- mice
Positive control	Lymph node cells

Properties

Form	Liquid
Storage instructions	Shipped at 4°C. Store at +4°C.
Storage buffer	Preservative: 0.02% Sodium azide Constituents: 99% PBS, 0.5% BSA
Clonality	Monoclonal
Clone number	IBL-5/25
Myeloma	x63-Ag8.653
Isotype	IgG1
Light chain type	kappa

Applications

Our [Abpromise guarantee](#) covers the use of **ab112507** in the following tested applications.

The application notes include recommended starting dilutions; optimal dilutions/concentrations should be determined by the end user.

Application	Abreviews	Notes
IHC-Fr		Use at an assay dependent concentration. acetone-fixed

Application	Abreviews	Notes
IP		Use at an assay dependent concentration.
Flow Cyt		Use 2µg for 10 ⁶ cells. ab18404 - Rat monoclonal IgG1, is suitable for use as an isotype control with this antibody.

Target

Function

Protein tyrosine-protein phosphatase required for T-cell activation through the antigen receptor. Acts as a positive regulator of T-cell coactivation upon binding to DPP4. The first PTPase domain has enzymatic activity, while the second one seems to affect the substrate specificity of the first one. Upon T-cell activation, recruits and dephosphorylates SKAP1 and FYN.

Involvement in disease

Defects in PTPRC are a cause of severe combined immunodeficiency autosomal recessive T-cell-negative/B-cell-positive/NK-cell-positive (T(-)B(+)NK(+)) SCID [MIM:608971]. A form of severe combined immunodeficiency (SCID), a genetically and clinically heterogeneous group of rare congenital disorders characterized by impairment of both humoral and cell-mediated immunity, leukopenia, and low or absent antibody levels. Patients present in infancy recurrent, persistent infections by opportunistic organisms. The common characteristic of all types of SCID is absence of T-cell-mediated cellular immunity due to a defect in T-cell development. Genetic variations in PTPRC are involved in multiple sclerosis susceptibility (MS) [MIM:126200]. MS is a neurodegenerative disorder characterized by the gradual accumulation of focal plaques of demyelination particularly in the periventricular areas of the brain. Peripheral nerves are not affected. Onset usually in third or fourth decade with intermittent progression over an extended period. The cause is still uncertain.

Sequence similarities

Belongs to the protein-tyrosine phosphatase family. Receptor class 1/6 subfamily. Contains 2 fibronectin type-III domains. Contains 2 tyrosine-protein phosphatase domains.

Domain

The first PTPase domain interacts with SKAP1.

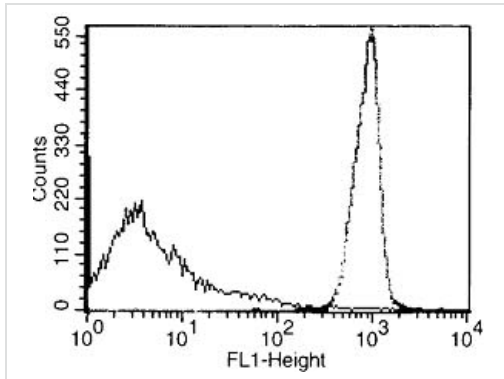
Post-translational modifications

Heavily N- and O-glycosylated.

Cellular localization

Membrane. Membrane raft. Colocalized with DPP4 in membrane rafts.

Images



95% Lymph node cells stained using
ab112507 at $2\mu\text{g} / 10^6$ cells.

Flow Cytometry - Anti-CD45 antibody [IBL-5/25]
(FITC) (ab112507)

Please note: All products are "FOR RESEARCH USE ONLY AND ARE NOT INTENDED FOR DIAGNOSTIC OR THERAPEUTIC USE"

Our Abpromise to you: Quality guaranteed and expert technical support

- Replacement or refund for products not performing as stated on the datasheet
- Valid for 12 months from date of delivery
- Response to your inquiry within 24 hours
- We provide support in Chinese, English, French, German, Japanese and Spanish
- Extensive multi-media technical resources to help you
- We investigate all quality concerns to ensure our products perform to the highest standards

If the product does not perform as described on this datasheet, we will offer a refund or replacement. For full details of the Abpromise, please visit <https://www.abcam.com/abpromise> or contact our technical team.

Terms and conditions

- Guarantee only valid for products bought direct from Abcam or one of our authorized distributors