

Product datasheet

Anti-KLHL25 antibody ab113888

4 Images

Overview

<b>Product name</b>	Anti-KLHL25 antibody
<b>Description</b>	Chicken polyclonal to KLHL25
<b>Host species</b>	Chicken
<b>Tested applications</b>	<b>Suitable for:</b> WB, ELISA, IHC-P
<b>Species reactivity</b>	<b>Reacts with:</b> Human
<b>Immunogen</b>	Synthetic peptide corresponding to Human KLHL25 (internal sequence). Immunogen is a 14 amino acid peptide near the center of human KLHL25.
<b>Positive control</b>	Human spleen, thymus and tonsil tissues; Jurkat cell lysate

Properties

<b>Form</b>	Liquid
<b>Storage instructions</b>	Shipped at 4°C. Store at +4°C short term (1-2 weeks). Store at -20°C or -80°C. Avoid freeze / thaw cycle.
<b>Storage buffer</b>	Preservative: 0.02% Sodium azide Constituent: 99% PBS
<b>Purity</b>	Immunogen affinity purified
<b>Clonality</b>	Polyclonal
<b>Isotype</b>	IgG

Applications

Our [Abpromise guarantee](#) covers the use of **ab113888** in the following tested applications.

The application notes include recommended starting dilutions; optimal dilutions/concentrations should be determined by the end user.

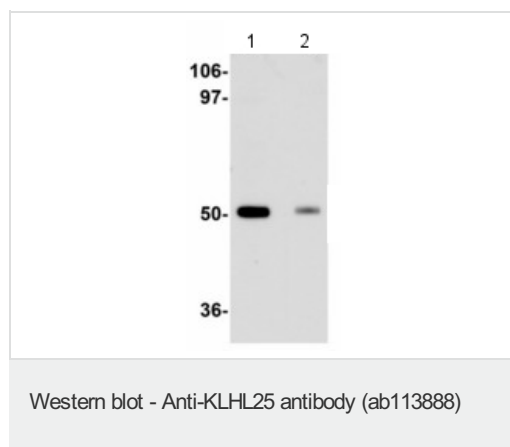
Application	Abreviews	Notes
WB		Use a concentration of 1 - 2 µg/ml. Predicted molecular weight: 66 kDa.
ELISA		Use at an assay dependent dilution.

Application	Abreviews	Notes
IHC-P		Use a concentration of 5 µg/ml.

## Target

<b>Sequence similarities</b>	Contains 1 BTB (POZ) domain. Contains 6 Kelch repeats.
------------------------------	---

## Images

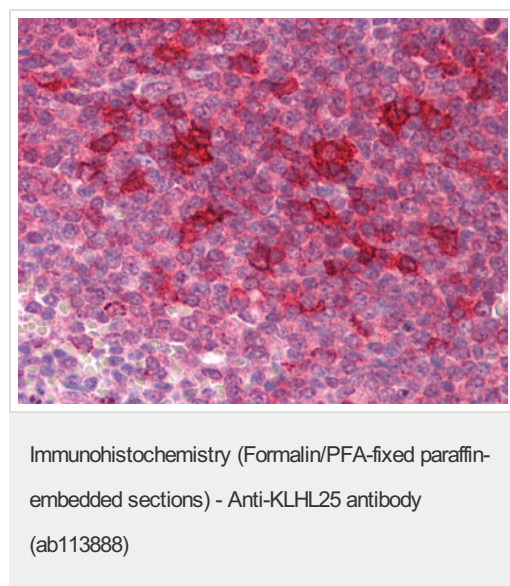


**All lanes** : Anti-KLHL25 antibody (ab113888)  
at 1 µg/ml

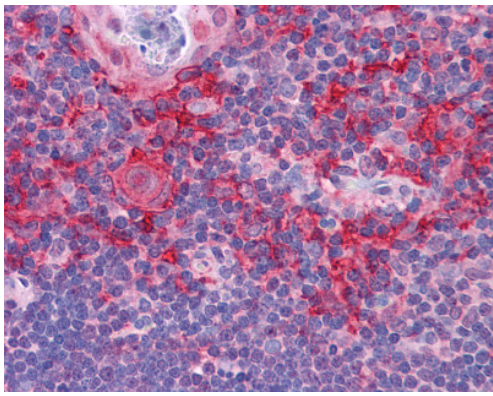
**Lane 1** : Jurkat cell lysate

**Lane 2** : Jurkat cell lysate with with blocking peptide

**Predicted band size:** 66 kDa

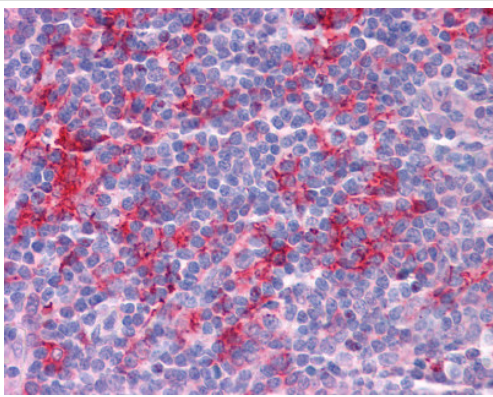


ab113888, at 5 µg/ml, staining KLHL25 in formalin fixed, paraffin embedded Human spleen tissue by Immunohistochemistry.



ab113888, at 5 µg/ml, staining KLHL25 in formalin fixed, paraffin embedded Human thymus tissue by Immunohistochemistry.

Immunohistochemistry (Formalin/PFA-fixed paraffin-embedded sections) - Anti-KLHL25 antibody (ab113888)



ab113888, at 5 µg/ml, staining KLHL25 in formalin fixed, paraffin embedded Human tonsil tissue by Immunohistochemistry.

Immunohistochemistry (Formalin/PFA-fixed paraffin-embedded sections) - Anti-KLHL25 antibody (ab113888)

**Please note:** All products are "FOR RESEARCH USE ONLY AND ARE NOT INTENDED FOR DIAGNOSTIC OR THERAPEUTIC USE"

### **Our Abpromise to you: Quality guaranteed and expert technical support**

- Replacement or refund for products not performing as stated on the datasheet
- Valid for 12 months from date of delivery
- Response to your inquiry within 24 hours
- We provide support in Chinese, English, French, German, Japanese and Spanish
- Extensive multi-media technical resources to help you
- We investigate all quality concerns to ensure our products perform to the highest standards

If the product does not perform as described on this datasheet, we will offer a refund or replacement. For full details of the Abpromise, please visit <https://www.abcam.com/abpromise> or contact our technical team.

## Terms and conditions

---

- Guarantee only valid for products bought direct from Abcam or one of our authorized distributors