


Product datasheet

Anti-CCDC28A antibody ab115039

1 Image

Overview

Product name	Anti-CCDC28A antibody
Description	Rabbit polyclonal to CCDC28A
Host species	Rabbit
Tested applications	Suitable for: IP Unsuitable for: WB
Species reactivity	Reacts with: Human Predicted to work with: Horse, Chimpanzee, Rhesus monkey, Gorilla, Orangutan 
Immunogen	Synthetic peptide, corresponding to a region within amino acids 224-274 of Human CCDC28A (NP_056254.1).
Positive control	HeLa whole cell lysate.

Properties

Form	Liquid
Storage instructions	Shipped at 4°C. Upon delivery aliquot and store at -20°C. Avoid freeze / thaw cycles.
Storage buffer	Preservative: 0.09% Sodium azide Constituent: 99% Tris citrate/phosphate Note: pH 7 to 8
Purity	Immunogen affinity purified
Clonality	Polyclonal
Isotype	IgG

Applications

Our [Abpromise guarantee](#) covers the use of **ab115039** in the following tested applications.

The application notes include recommended starting dilutions; optimal dilutions/concentrations should be determined by the end user.

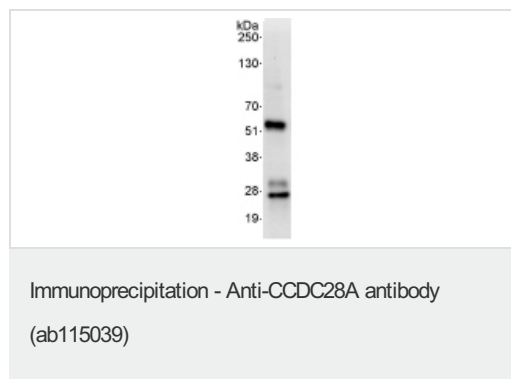
Application	Abreviews	Notes
IP		Use at 5-10 µg/mg of lysate.

Application notes

Is unsuitable for WB.

Target

Images



Detection of CCDC28A by Western Blot of Immunoprecipitates.

ab115039 at 1µg/ml staining CCDC28A in HeLa whole cell lysate immunoprecipitated using ab115039 at 10µg/mg lysate (1 mg/IP; 20% of IP loaded).

Detection: Chemiluminescence with exposure time of 10 seconds.

Please note: All products are "FOR RESEARCH USE ONLY AND ARE NOT INTENDED FOR DIAGNOSTIC OR THERAPEUTIC USE"

Our Abpromise to you: Quality guaranteed and expert technical support

- Replacement or refund for products not performing as stated on the datasheet
- Valid for 12 months from date of delivery
- Response to your inquiry within 24 hours
- We provide support in Chinese, English, French, German, Japanese and Spanish
- Extensive multi-media technical resources to help you
- We investigate all quality concerns to ensure our products perform to the highest standards

If the product does not perform as described on this datasheet, we will offer a refund or replacement. For full details of the Abpromise, please visit <https://www.abcam.com/abpromise> or contact our technical team.

Terms and conditions

- Guarantee only valid for products bought direct from Abcam or one of our authorized distributors