


## Product datasheet

# Anti-ARIH1 antibody ab115300

2 Images

### Overview

---

<b>Product name</b>	Anti-ARIH1 antibody
<b>Description</b>	Goat polyclonal to ARIH1
<b>Host species</b>	Goat
<b>Tested applications</b>	<b>Suitable for:</b> WB, ELISA, IHC-P
<b>Species reactivity</b>	<b>Reacts with:</b> Human <b>Predicted to work with:</b> Mouse, Cow, Xenopus laevis, Zebrafish 
<b>Immunogen</b>	Synthetic peptide: HEGYEKDLWEYED by a Cysteine residue linker, corresponding to C terminal amino acids 544-557 of Human ARIH1 <a href="#">Run BLAST with</a> <a href="#">Run BLAST with</a>
<b>Positive control</b>	Human Adrenal tissue; U937 lysate

### Properties

---

<b>Form</b>	Liquid
<b>Storage instructions</b>	Shipped at 4°C. Upon delivery aliquot and store at -20°C. Avoid freeze / thaw cycles.
<b>Storage buffer</b>	pH: 7.30 Preservative: 0.02% Sodium azide Constituents: 98% Tris buffered saline, 0.5% BSA
<b>Purity</b>	Immunogen affinity purified
<b>Clonality</b>	Polyclonal
<b>Isotype</b>	IgG

### Applications

---

Our [Abpromise guarantee](#) covers the use of **ab115300** in the following tested applications.

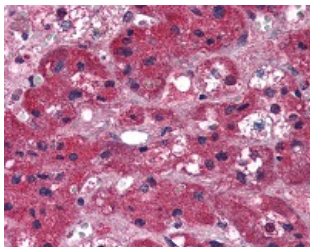
The application notes include recommended starting dilutions; optimal dilutions/concentrations should be determined by the end user.

Application	Abreviews	Notes
WB		Use a concentration of 0.2 - 1 µg/ml. Predicted molecular weight: 64 kDa.
ELISA		1/32000.
IHC-P		Use a concentration of 5 µg/ml. Perform heat mediated antigen retrieval with citrate buffer pH 6 before commencing with IHC staining protocol.

## Target

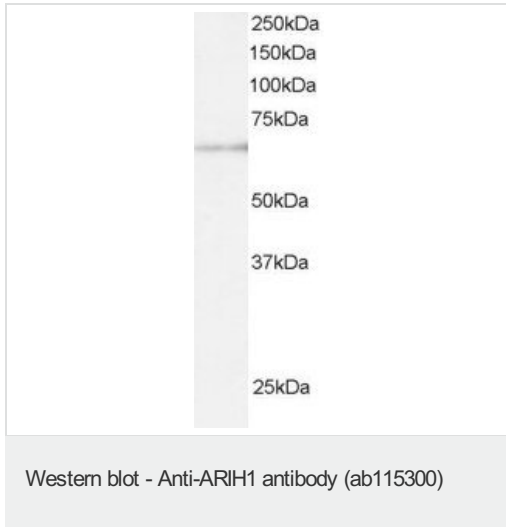
<b>Function</b>	Might act as an E3 ubiquitin-protein ligase, or as part of the E3 complex, which accepts ubiquitin from specific E2 ubiquitin-conjugating enzymes, such as UBE2L3/UBCM4, and then transfers it to substrates.
<b>Tissue specificity</b>	Widely expressed.
<b>Sequence similarities</b>	Belongs to the RBR family. Ariadne subfamily. Contains 1 IBR-type zinc finger. Contains 2 RING-type zinc fingers.
<b>Cellular localization</b>	Cytoplasm. Mainly cytoplasmic.

## Images



ab115300, at 5 µg/ml, staining ARIH1 in formalin-fixed, paraffin-embedded Human Adrenal tissue by Immunohistochemistry, using a biotinylated anti-goat IgG secondary antibody, alkaline phosphatase-streptavidin and chromogen.

Immunohistochemistry (Formalin/PFA-fixed paraffin-embedded sections) - Anti-ARIH1 antibody (ab115300)



Anti-ARIH1 antibody (ab115300) at 0.5 µg/ml  
+ U937 lysate (in RIPA buffer) at 30 µg

Developed using the ECL technique.

**Predicted band size:** 64 kDa

Primary incubated for 1 hour.

**Please note:** All products are "FOR RESEARCH USE ONLY AND ARE NOT INTENDED FOR DIAGNOSTIC OR THERAPEUTIC USE"

### Our Abpromise to you: Quality guaranteed and expert technical support

- Replacement or refund for products not performing as stated on the datasheet
- Valid for 12 months from date of delivery
- Response to your inquiry within 24 hours
- We provide support in Chinese, English, French, German, Japanese and Spanish
- Extensive multi-media technical resources to help you
- We investigate all quality concerns to ensure our products perform to the highest standards

If the product does not perform as described on this datasheet, we will offer a refund or replacement. For full details of the Abpromise, please visit <https://www.abcam.com/abpromise> or contact our technical team.

### Terms and conditions

- Guarantee only valid for products bought direct from Abcam or one of our authorized distributors