


Product datasheet

Anti-Thrombopoietin antibody ab115679

1 Image

Overview

Product name	Anti-Thrombopoietin antibody
Description	Rabbit polyclonal to Thrombopoietin
Host species	Rabbit
Tested applications	Suitable for: ELISA, IHC-P
Species reactivity	Reacts with: Human Predicted to work with: Mouse, Rat, Horse, Cow, Cat, Dog 
Immunogen	Synthetic peptide: KLLRDSHVLHSRLSQC conjugated to KLH, corresponding to amino acids 35-50 of Human Thrombopoietin (NP_000451.1). Run BLAST with Run BLAST with
Positive control	Human Spleen tissue.

Properties

Form	Liquid
Storage instructions	Shipped at 4°C. Store at -20°C.
Storage buffer	Preservative: 0.1% Sodium azide Constituent: 99% PBS
Purity	Protein G purified
Clonality	Polyclonal
Isotype	IgG

Applications

Our [Abpromise guarantee](#) covers the use of **ab115679** in the following tested applications.

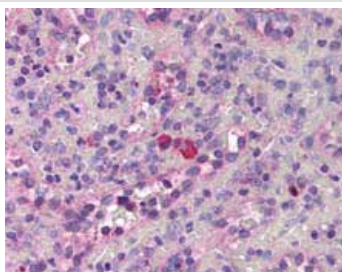
The application notes include recommended starting dilutions; optimal dilutions/concentrations should be determined by the end user.

Application	Abreviews	Notes
ELISA		1/1 - 1/1000.
IHC-P		Use a concentration of 10 µg/ml. Perform heat mediated antigen retrieval with citrate buffer pH 6 before commencing with IHC staining protocol.

Target

Function	Lineage-specific cytokine affecting the proliferation and maturation of megakaryocytes from their committed progenitor cells. It acts at a late stage of megakaryocyte development. It may be the major physiological regulator of circulating platelets.
Involvement in disease	Defects in THPO are a cause of essential thrombocythemia (ET) [MIM:187950]. ET is inherited as an autosomal dominant trait which is characterized by elevated platelet levels due to sustained proliferation of megakaryocytes, and frequently lead to thrombotic and haemorrhagic complications.
Sequence similarities	Belongs to the EPO/TPO family.
Domain	Two-domain structure with an erythropoietin-like N-terminal and a Ser/Pro/Thr-rich C-terminal.
Cellular localization	Secreted.

Images



ab115679, at 10µg/ml, staining Thrombopoietin in Formalin-fixed, Paraffin-embedded Human Spleen tissue by Immunohistochemistry followed by biotinylated secondary antibody, alkaline phosphatase-streptavidin and chromogen.

Immunohistochemistry (Formalin/PFA-fixed paraffin-embedded sections) - Anti-Thrombopoietin antibody (ab115679)

Please note: All products are "FOR RESEARCH USE ONLY AND ARE NOT INTENDED FOR DIAGNOSTIC OR THERAPEUTIC USE"

Our Abpromise to you: Quality guaranteed and expert technical support

- Replacement or refund for products not performing as stated on the datasheet
- Valid for 12 months from date of delivery
- Response to your inquiry within 24 hours
- We provide support in Chinese, English, French, German, Japanese and Spanish
- Extensive multi-media technical resources to help you

- We investigate all quality concerns to ensure our products perform to the highest standards

If the product does not perform as described on this datasheet, we will offer a refund or replacement. For full details of the Abpromise, please visit <https://www.abcam.com/abpromise> or contact our technical team.

Terms and conditions

- Guarantee only valid for products bought direct from Abcam or one of our authorized distributors