


Product datasheet

Anti-TBCC antibody ab116036

1 Image

Overview

<b>Product name</b>	Anti-TBCC antibody
<b>Description</b>	Rabbit polyclonal to TBCC
<b>Host species</b>	Rabbit
<b>Tested applications</b>	<b>Suitable for:</b> WB
<b>Species reactivity</b>	<b>Reacts with:</b> Mouse <b>Predicted to work with:</b> Human 
<b>Immunogen</b>	Synthetic peptide conjugated to KLH, corresponding to a region within N terminal amino acids 19-49 of Human TBCC (NP_003183.1)
<b>Positive control</b>	Mouse spleen tissue lysates

Properties

<b>Form</b>	Liquid
<b>Storage instructions</b>	Shipped at 4°C. Store at 4°C (up to 6 months). Store at -20°C long term.
<b>Storage buffer</b>	Preservative: 0.09% Sodium azide Constituent: 99% PBS
<b>Purity</b>	Immunogen affinity purified
<b>Purification notes</b>	This antibody is purified through a protein A column, followed by peptide affinity purification.
<b>Clonality</b>	Polyclonal
<b>Isotype</b>	IgG

Applications

Our [Abpromise guarantee](#) covers the use of **ab116036** in the following tested applications.

The application notes include recommended starting dilutions; optimal dilutions/concentrations should be determined by the end user.

Application	Abreviews	Notes
WB		1/100 - 1/500. Predicted molecular weight: 39 kDa.

## Target

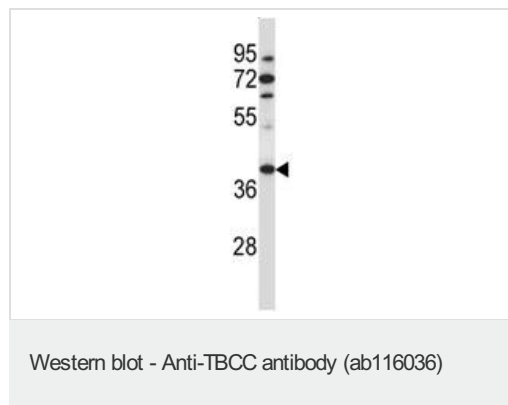
---

<b>Function</b>	Tubulin-folding protein; involved in the final step of the tubulin folding pathway.
<b>Tissue specificity</b>	Expressed in the retina. Expressed in the rod and cone photoreceptors, extending from the inner segments (IS), through the outer nuclear layer (ONL) and into the synapses in the outer plexiform layer (OPL). Strongly expressed to the photoreceptor connecting cilium at the tips of the IS (at protein level).
<b>Sequence similarities</b>	Belongs to the TBCC family. Contains 1 C-CAP/cofactor C-like domain.
<b>Cellular localization</b>	Cytoplasm. Detected predominantly in the photoreceptor connecting cilium.

---

## Images

---



Anti-TBCC antibody (ab116036) at 1/100 dilution + Mouse spleen tissue lysates at 35 µg

**Predicted band size:** 39 kDa

**Please note:** All products are "FOR RESEARCH USE ONLY AND ARE NOT INTENDED FOR DIAGNOSTIC OR THERAPEUTIC USE"

## Our Abpromise to you: Quality guaranteed and expert technical support

---

- Replacement or refund for products not performing as stated on the datasheet
- Valid for 12 months from date of delivery
- Response to your inquiry within 24 hours
- We provide support in Chinese, English, French, German, Japanese and Spanish
- Extensive multi-media technical resources to help you
- We investigate all quality concerns to ensure our products perform to the highest standards

If the product does not perform as described on this datasheet, we will offer a refund or replacement. For full details of the Abpromise, please visit <https://www.abcam.com/abpromise> or contact our technical team.

## Terms and conditions

---

- Guarantee only valid for products bought direct from Abcam or one of our authorized distributors