






Product datasheet

Anti-Dlx6 antibody ab116264

1 Image

Overview

Product name	Anti-Dlx6 antibody
Description	Rabbit polyclonal to Dlx6
Host species	Rabbit
Tested applications	Suitable for: WB
Species reactivity	Reacts with: Rat Predicted to work with: Mouse, Rabbit, Horse, Chicken, Guinea pig, Cow, Cat, Dog, Human, Zebrafish, Spider monkey 
Immunogen	Synthetic peptide, corresponding to a region within C terminal amino acids 161-210 (FQQTQYLALP ERAELAASLG LTQTQVKWF QNKRSKFKKL LKQGSNPHEs) of Rat Dlx6 (XP_575377).  Run BLAST with   Run BLAST with 
Positive control	Rat muscle lysate.

Properties

Form	Liquid
Storage instructions	Shipped at 4°C. Upon delivery aliquot and store at -20°C. Avoid repeated freeze / thaw cycles.
Storage buffer	Preservative: 0.09% Sodium azide Constituents: 2% Sucrose, PBS
Purity	Immunogen affinity purified
Clonality	Polyclonal
Isotype	IgG

Applications

The Abpromise guarantee Our **Abpromise guarantee** covers the use of ab116264 in the following tested applications. The application notes include recommended starting dilutions; optimal dilutions/concentrations should be determined by the end user.

Application	Abreviews	Notes

Application	Abreviews	Notes
WB		Use a concentration of 1 µg/ml. Predicted molecular weight: 30 kDa. Good results were obtained when blocked with 5% non-fat dry milk in 0.05% PBS-T.

Target

Sequence similarities

Belongs to the distal-less homeobox family.
Contains 1 homeobox DNA-binding domain.

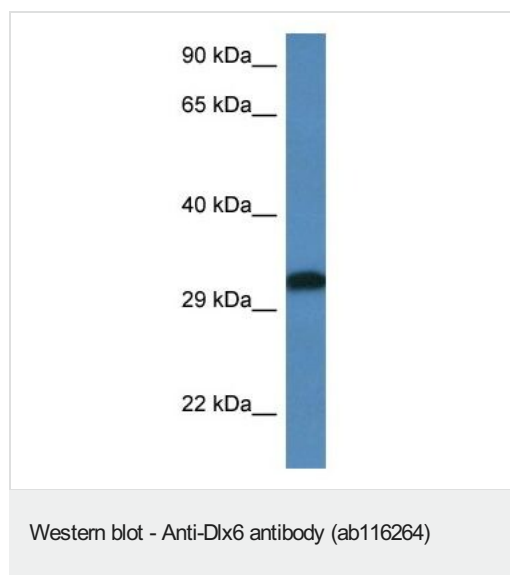
Developmental stage

First expressed in embryos at 8.5-9 days in facial and branchial arch mesenchyme, otic vesicles and frontonasal ectoderm around olfactory placodes, a day later expression is seen in the developing forebrain in primordia of the ganglionic eminence and ventral diencephalic regions. In day 12.5 embryos, expressed in the brain and bones, and also in all skeletal structures of midgestation embryos after the first cartilage formation, and expression progressively declines in both brain and skeleton in day 15 embryos.

Cellular localization

Nucleus.

Images



Anti-Dlx6 antibody (ab116264) at 1 µg/ml + Rat muscle lysate at 10 µg

Predicted band size: 30 kDa

Gel concentration: 12%.

Please note: All products are "FOR RESEARCH USE ONLY. NOT FOR USE IN DIAGNOSTIC PROCEDURES"

Our Abpromise to you: Quality guaranteed and expert technical support

- Replacement or refund for products not performing as stated on the datasheet
- Valid for 12 months from date of delivery
- Response to your inquiry within 24 hours
- We provide support in Chinese, English, French, German, Japanese and Spanish

- Extensive multi-media technical resources to help you
- We investigate all quality concerns to ensure our products perform to the highest standards

If the product does not perform as described on this datasheet, we will offer a refund or replacement. For full details of the Abpromise, please visit <https://www.abcam.com/abpromise> or contact our technical team.

Terms and conditions

- Guarantee only valid for products bought direct from Abcam or one of our authorized distributors