

Product datasheet

Anti-NAT8 antibody [5A8] ab117977

12 Images

Overview

<b>Product name</b>	Anti-NAT8 antibody [5A8]
<b>Description</b>	Mouse monoclonal [5A8] to NAT8
<b>Host species</b>	Mouse
<b>Tested applications</b>	<b>Suitable for:</b> WB, IHC-P, ICC/IF
<b>Species reactivity</b>	<b>Reacts with:</b> Human
<b>Immunogen</b>	Protein expressed in 293T cell transfected with Human NAT8 expression vector.
<b>Positive control</b>	WB: HEK293T cells were transfected with the pCMV6-ENTRY NAT8 IHC-P: Human adenocarcinoma of breast, colon, adenocarcinoma of colon, kidney, ovary, adenocarcinoma of ovary, pancreas, carcinoma of thyroid, endometrium, and carcinoma of bladder tissues. ICC/IF: COS7 cells transiently transfected with NAT8
<b>General notes</b>	Dilute in PBS (pH 7.3) before use.

Properties

<b>Form</b>	Liquid
<b>Storage instructions</b>	Shipped at 4°C. Upon delivery aliquot and store at -20°C. Avoid freeze / thaw cycles.
<b>Storage buffer</b>	pH: 7.30 Preservative: 0.02% Sodium azide Constituents: 48% PBS, 1% BSA, 50% Glycerol
<b>Purity</b>	Protein G purified
<b>Purification notes</b>	Purified from Mouse ascites fluids by affinity chromatography.
<b>Clonality</b>	Monoclonal
<b>Clone number</b>	5A8
<b>Isotype</b>	IgG1

Applications

Our [Abpromise guarantee](#) covers the use of **ab117977** in the following tested applications.

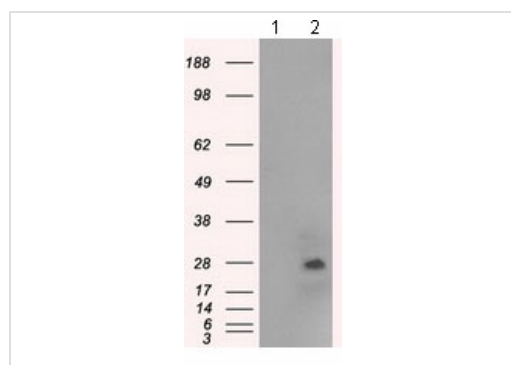
The application notes include recommended starting dilutions; optimal dilutions/concentrations should be determined by the end user.

Application	Abreviews	Notes
WB		1/500. Predicted molecular weight: 26 kDa.
IHC-P		1/50.
ICC/IF		1/100.

## Target

<b>Function</b>	Plays a role in regulation of gastrulation.
<b>Tissue specificity</b>	Expression is restricted to liver and kidney.
<b>Sequence similarities</b>	Belongs to the camello family. Contains 1 N-acetyltransferase domain.
<b>Cellular localization</b>	Membrane.

## Images



Western blot - Anti-NAT8 antibody [5A8] (ab117977)

**All lanes :** Anti-NAT8 antibody [5A8]  
(ab117977) at 1/500 dilution

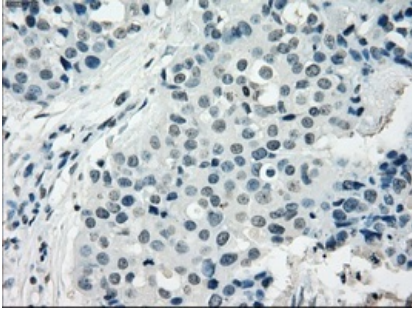
**Lane 1 :** HEK293T cells transfected with  
pCMV6-ENTRY control

**Lane 2 :** HEK293T cells transfected with  
pCMV6-ENTRY NAT8

Lysates/proteins at 5 µg per lane.

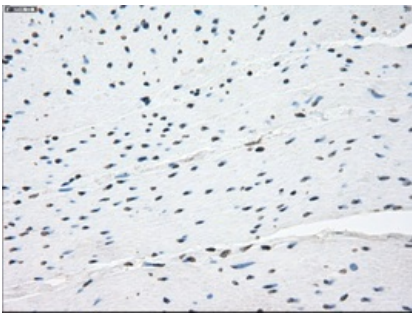
**Predicted band size:** 26 kDa

HEK293T cell lysates were generated from  
transient transfection of the cDNA clone  
(RC203157)



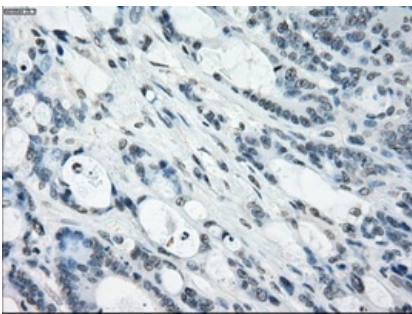
Immunohistochemical staining of paraffin embedded Human Adenocarcinoma of breast tissue, using ab117977 at a dilution of 1/50.

Immunohistochemistry (Formalin/PFA-fixed paraffin-embedded sections) - Anti-NAT8 antibody [5A8] (ab117977)



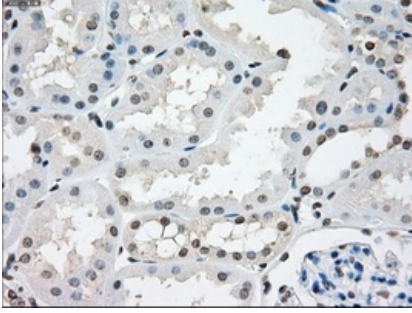
Immunohistochemical staining of paraffin embedded Human colon tissue, using ab117977 at a dilution of 1/50.

Immunohistochemistry (Formalin/PFA-fixed paraffin-embedded sections) - Anti-NAT8 antibody [5A8] (ab117977)



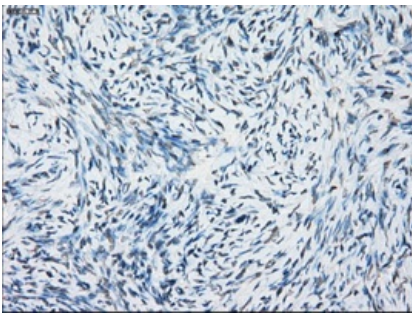
Immunohistochemical staining of paraffin embedded Human adenocarcinoma of colon tissue, using ab117977 at a dilution of 1/50.

Immunohistochemistry (Formalin/PFA-fixed paraffin-embedded sections) - Anti-NAT8 antibody [5A8] (ab117977)



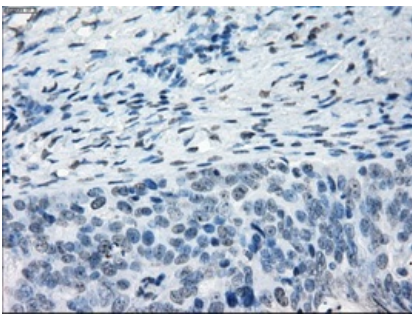
Immunohistochemical staining of paraffin embedded Human kidney tissue, using ab117977 at a dilution 1/50.

Immunohistochemistry (Formalin/PFA-fixed paraffin-embedded sections) - Anti-NAT8 antibody [5A8] (ab117977)



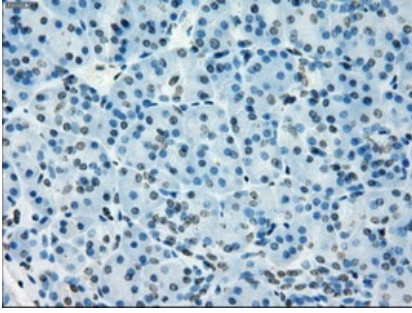
Immunohistochemical staining of paraffin embedded Human ovary tissue, using ab117977 at a dilution 1/50.

Immunohistochemistry (Formalin/PFA-fixed paraffin-embedded sections) - Anti-NAT8 antibody [5A8] (ab117977)



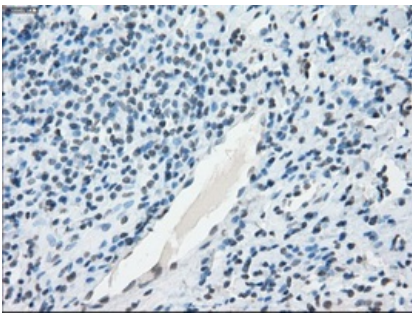
Immunohistochemical staining of paraffin embedded Human adenocarcinoma of ovary tissue, using ab117977 at a dilution of 1/50.

Immunohistochemistry (Formalin/PFA-fixed paraffin-embedded sections) - Anti-NAT8 antibody [5A8] (ab117977)



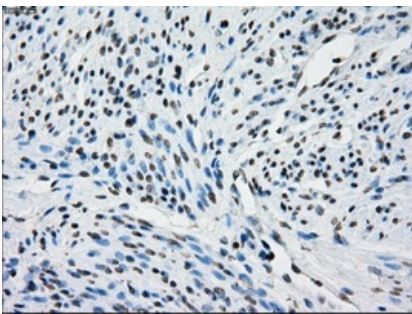
Immunohistochemical staining of paraffin embedded Human pancreas tissue, using ab117977 at a dilution of 1/50.

Immunohistochemistry (Formalin/PFA-fixed paraffin-embedded sections) - Anti-NAT8 antibody [5A8] (ab117977)



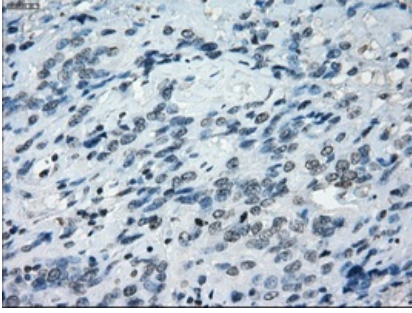
Immunohistochemical staining of paraffin embedded Human carcinoma of thyroid tissue, using ab117977 at a dilution of 1/50.

Immunohistochemistry (Formalin/PFA-fixed paraffin-embedded sections) - Anti-NAT8 antibody [5A8] (ab117977)



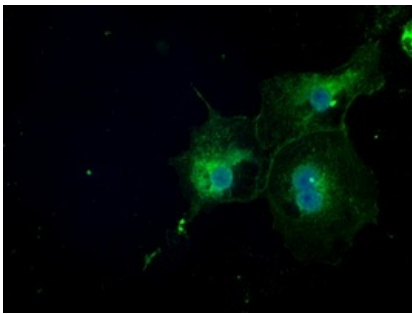
Immunohistochemical staining of paraffin-embedded Human endometrium tissue using ab117977 at a dilution of 1/50.

Immunohistochemistry (Formalin/PFA-fixed paraffin-embedded sections) - Anti-NAT8 antibody [5A8] (ab117977)



Immunohistochemical staining of paraffin embedded Human carcinoma of bladder tissue, using ab117977 at a dilution of 1/50.

Immunohistochemistry (Formalin/PFA-fixed paraffin-embedded sections) - Anti-NAT8 antibody [5A8] (ab117977)



Immunofluorescent staining of COS7 cells transiently transfected by NAT8, using ab117977 at a dilution of 1/100.

Immunohistochemistry (Formalin/PFA-fixed paraffin-embedded sections) - Anti-NAT8 antibody [5A8] (ab117977)

**Please note:** All products are "FOR RESEARCH USE ONLY AND ARE NOT INTENDED FOR DIAGNOSTIC OR THERAPEUTIC USE"

### Our Abpromise to you: Quality guaranteed and expert technical support

- Replacement or refund for products not performing as stated on the datasheet
- Valid for 12 months from date of delivery
- Response to your inquiry within 24 hours
- We provide support in Chinese, English, French, German, Japanese and Spanish
- Extensive multi-media technical resources to help you
- We investigate all quality concerns to ensure our products perform to the highest standards

If the product does not perform as described on this datasheet, we will offer a refund or replacement. For full details of the Abpromise, please visit <https://www.abcam.com/abpromise> or contact our technical team.

### Terms and conditions

- Guarantee only valid for products bought direct from Abcam or one of our authorized distributors