



Product datasheet

Anti-ACY3 antibody [OTI3A1] ab117983

[3 Images](#)

Overview

Product name	Anti-ACY3 antibody [OTI3A1]
Description	Mouse monoclonal [OTI3A1] to ACY3
Host species	Mouse
Tested applications	Suitable for: WB, Flow Cyt
Species reactivity	Reacts with: Human
Immunogen	<p>Recombinant full length protein corresponding to Human ACY3 aa 1-319. Produced in HEK-293T cells (NP_542389).</p> <p>Sequence:</p> <pre>MCSLPVPREPLRRVAVTGGTHGNEMSGVYLARHWLHAPAE LQRASFSAVP VLANPAATSGCRRYVDHDLNRTFTSSFLNSRPTD DDPYEVTRARELNQLL GPKASGQAFDFVLDLHNTTANMGTC LIAKSSHEVFAMHLCRHLQLQYPEL SCQVFLYQRSGEESYNLDSVAKNGLGLELGPQPQGVL RADIFSRMRTLVA TVLDFIELFNQGTAFPAFEMEAYRPVGVVDFPRTEAGHLAGTVHPQLQDR DFQPLQPGAPIFQMFSGEDLLYEGESTVYPVFINEAAYYEKGVA FVQTEK FTFTVPAMPALTPAPSPAS</pre> <p>Database link: Q96HD9</p> <p style="text-align: right;">  Run BLAST with  Run BLAST with </p>
Positive control	WB: HEK-293T cell lysate transfected with pCMV6-ENTRY ACY3 cDNA; HepG2, HeLa, SVT2, A549, COS-7, Jurkat, MDCK and MC7 cell lysate. FC: HEK-293T cells transfected with overexpress plasmid.
General notes	Clone OTI3A1 (formerly 3A1).

Properties

Form	Liquid
Storage instructions	Shipped at 4°C. Store at +4°C short term (1-2 weeks). Upon delivery aliquot. Store at -20°C. Avoid freeze / thaw cycle.
Storage buffer	<p>pH: 7.30</p> <p>Preservative: 0.02% Sodium azide</p> <p>Constituents: PBS, 1% BSA, 50% Glycerol</p>
Purity	Affinity purified

Purification notes	Purified from cell culture supernatant by affinity chromatography.
Clonality	Monoclonal
Clone number	OT13A1
Isotype	IgG1

Applications

Our [Abpromise guarantee](#) covers the use of **ab117983** in the following tested applications.

The application notes include recommended starting dilutions; optimal dilutions/concentrations should be determined by the end user.

Application	Abreviews	Notes
WB		1/2000. Predicted molecular weight: 35 kDa.
Flow Cyt		1/100.

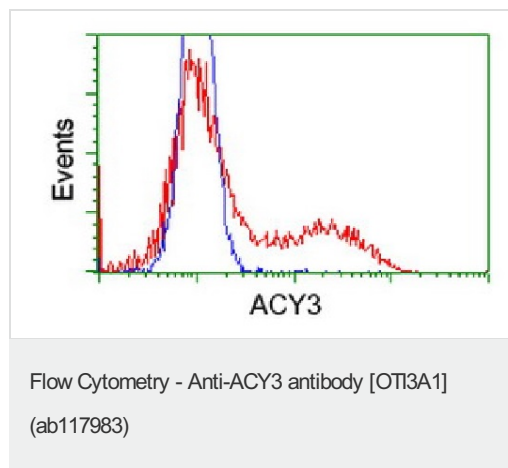
Target

Function Plays an important role in deacetylating mercapturic acids in kidney proximal tubules.

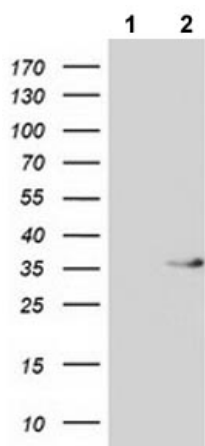
Sequence similarities Belongs to the AspA/AstE family. Aspartoacylase subfamily.

Cellular localization Apical cell membrane. Cytoplasm. Predominantly localized in the apical membrane of cells in the S1 segment. In the proximal straight tubules (S2 and S3 segments) is expressed diffusely throughout the cytoplasm.

Images



HEK-293T (Human epithelial cell line from embryonic kidney transformed with large T antigen) cells transfected with either ACY3 overexpress plasmid (Red) or empty vector control plasmid (Blue) were immunostained by ab117983 and then analyzed by flow cytometry at 1/100 dilution.



Western blot - Anti-ACY3 antibody [OTI3A1]
(ab117983)

All lanes : Anti-ACY3 antibody [OTI3A1]

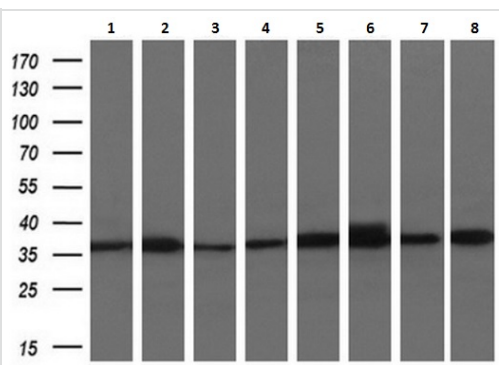
(ab117983) at 1/2000 dilution

Lane 1 : HEK-293T (Human epithelial cell line from embryonic kidney transformed with large T antigen) cell lysate transfected with pCMV6-ENTRY control cDNA

Lane 2 : HEK-293T cell lysate transfected with pCMV6-ENTRY ACY3 cDNA

Lysates/proteins at 5 µg per lane.

Predicted band size: 35 kDa



Western blot - Anti-ACY3 antibody [OTI3A1]
(ab117983)

All lanes : Anti-ACY3 antibody [OTI3A1]

(ab117983) at 1/200 dilution

Lane 1 : HepG2 (human liver hepatocellular carcinoma cell line) cell lysate

Lane 2 : HeLa (human epithelial cell line from cervix adenocarcinoma) cell lysate

Lane 3 : SVT2 cell lysate

Lane 4 : A549 (human lung carcinoma cell line) cell lysate

Lane 5 : COS-7 (African green monkey kidney fibroblast-like cell line) cell lysate

Lane 6 : Jurkat (human T cell leukemia cell line from peripheral blood) cell lysate

Lane 7 : MDCK (Canine kidney cell line) cell lysate

Lane 8 : MCF7 (Human breast adenocarcinoma cell line) cell lysate

Lysates/proteins at 10 µg per lane.

Predicted band size: 35 kDa

Please note: All products are "FOR RESEARCH USE ONLY AND ARE NOT INTENDED FOR DIAGNOSTIC OR THERAPEUTIC USE"

Our Abpromise to you: Quality guaranteed and expert technical support

- Replacement or refund for products not performing as stated on the datasheet
- Valid for 12 months from date of delivery
- Response to your inquiry within 24 hours

- We provide support in Chinese, English, French, German, Japanese and Spanish
- Extensive multi-media technical resources to help you
- We investigate all quality concerns to ensure our products perform to the highest standards

If the product does not perform as described on this datasheet, we will offer a refund or replacement. For full details of the Abpromise, please visit <https://www.abcam.com/abpromise> or contact our technical team.

Terms and conditions

- Guarantee only valid for products bought direct from Abcam or one of our authorized distributors