

Product datasheet

Anti-PPWD1 antibody [1G5] ab118029

[2 Images](#)

Overview

Product name	Anti-PPWD1 antibody [1G5]
Description	Mouse monoclonal [1G5] to PPWD1
Host species	Mouse
Tested applications	Suitable for: WB
Species reactivity	Reacts with: Rat, Dog, Human, Monkey
Immunogen	Recombinant full length Human PPWD1 produced in HEK293T cells (NP_056157).
Positive control	HEK293T transfected with pCMV6-ENTRY PPWD1 cDNA; HepG2, HeLa, HT29, A549, COS7, Jurkat, MDCK, PC12 and MCF7 cell lysates.
General notes	Stable for 12 months from date of receipt.

Properties

Form	Liquid
Storage instructions	Shipped at 4°C. Upon delivery aliquot and store at -20°C. Avoid repeated freeze / thaw cycles.
Storage buffer	pH: 7.30 Preservative: 0.02% Sodium azide Constituents: 48% PBS, 1% BSA, 50% Glycerol
Purity	Protein A purified
Purification notes	ab118029 is purified from Mouse ascites fluids by affinity chromatography.
Clonality	Monoclonal
Clone number	1G5
Isotype	IgG2b

Applications

Our [Abpromise guarantee](#) covers the use of **ab118029** in the following tested applications.

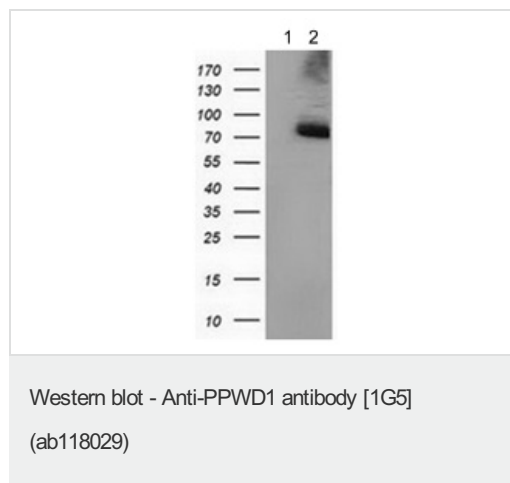
The application notes include recommended starting dilutions; optimal dilutions/concentrations should be determined by the end user.

Application	Abreviews	Notes
WB		1/200 - 1/500. Predicted molecular weight: 74 kDa.

Target

Function	Putative peptidylprolyl isomerase (PPIase). PPIases accelerate the folding of proteins. It catalyzes the cis-trans isomerization of proline imidic peptide bonds in oligopeptides. May be involved in pre-mRNA splicing.
Sequence similarities	Belongs to the cyclophilin-type PPIase family. PPIL1 subfamily. Contains 1 PPIase cyclophilin-type domain. Contains 4 WD repeats.
Cellular localization	Nucleus. Associated with spliceosomal complexes.

Images



All lanes : Anti-PPWD1 antibody [1G5] (ab118029) at 1/200 dilution

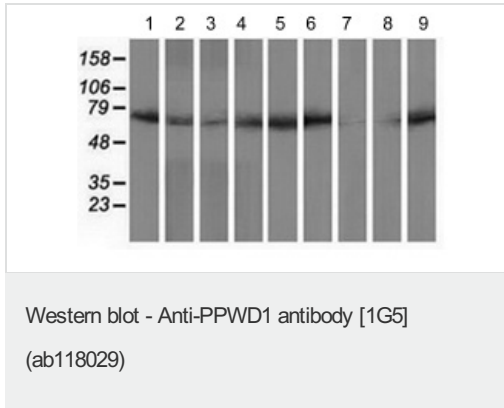
Lane 1 : HEK293T cell lysate transfected with pCMV6-ENTRY control cDNA

Lane 2 : HEK293T cell lysate transfected with pCMV6-ENTRY PPWD1 cDNA

Lysates/proteins at 5 µg per lane.

Predicted band size: 74 kDa

HEK293T cell lysates were generated from transient transfection of the cDNA clone (RC204570)



All lanes : Anti-PPWD1 antibody [1G5] (ab118029) at 1/200 dilution

Lane 1 : HepG2 cell lysate

Lane 2 : HeLa cell lysate

Lane 3 : HT29 cell lysate

Lane 4 : A549 cell lysate

Lane 5 : COS7 cell lysate

Lane 6 : Jurkat cell lysate

Lane 7 : MDCK cell lysate

Lane 8 : PC12 cell lysate

Lane 9 : MCF7 cell lysate

Lysates/proteins at 35 µg per lane.

Predicted band size: 74 kDa

HEK293T cell lysates were generated from transient transfection of the cDNA clone (RC204570)

Please note: All products are "FOR RESEARCH USE ONLY AND ARE NOT INTENDED FOR DIAGNOSTIC OR THERAPEUTIC USE"

Our Abpromise to you: Quality guaranteed and expert technical support

- Replacement or refund for products not performing as stated on the datasheet
- Valid for 12 months from date of delivery
- Response to your inquiry within 24 hours
- We provide support in Chinese, English, French, German, Japanese and Spanish
- Extensive multi-media technical resources to help you
- We investigate all quality concerns to ensure our products perform to the highest standards

If the product does not perform as described on this datasheet, we will offer a refund or replacement. For full details of the Abpromise, please visit <https://www.abcam.com/abpromise> or contact our technical team.

Terms and conditions

- Guarantee only valid for products bought direct from Abcam or one of our authorized distributors