

Product datasheet

Anti-Sorbitol Dehydrogenase antibody [17E7] ab118063

5 Images

Overview

<b>Product name</b>	Anti-Sorbitol Dehydrogenase antibody [17E7]
<b>Description</b>	Mouse monoclonal [17E7] to Sorbitol Dehydrogenase
<b>Host species</b>	Mouse
<b>Tested applications</b>	<b>Suitable for:</b> Flow Cyt, ICC/IF
<b>Species reactivity</b>	<b>Reacts with:</b> Human
<b>Immunogen</b>	Recombinant full length Human Sorbitol Dehydrogenase produced in HEK293T cells (NP_003095).
<b>Positive control</b>	HEK2934T and COS7 cells transiently transfected by pCMV6-ENTRY Sorbitol Dehydrogenase; HeLa, Jurkat and HepG2 cells.
<b>General notes</b>	Stable for 12 months from date of receipt.

Properties

<b>Form</b>	Liquid
<b>Storage instructions</b>	Shipped at 4°C. Upon delivery aliquot and store at -20°C. Avoid repeated freeze / thaw cycles.
<b>Storage buffer</b>	pH: 7.30 Preservative: 0.02% Sodium azide Constituents: 50% Glycerol, 48% PBS, 1% BSA
<b>Purity</b>	IgG fraction
<b>Purification notes</b>	ab118063 is purified from Mouse ascites fluids by affinity chromatography.
<b>Clonality</b>	Monoclonal
<b>Clone number</b>	17E7
<b>Isotype</b>	IgG1

Applications

Our [Abpromise guarantee](#) covers the use of **ab118063** in the following tested applications.

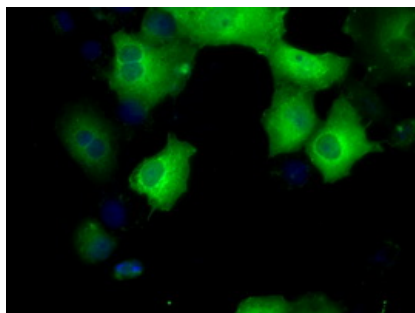
The application notes include recommended starting dilutions; optimal dilutions/concentrations should be determined by the end user.

Application	Abreviews	Notes
Flow Cyt		1/100. <a href="#">ab170190</a> - Mouse monoclonal IgG1, is suitable for use as an isotype control with this antibody.
ICC/IF		1/100.

## Target

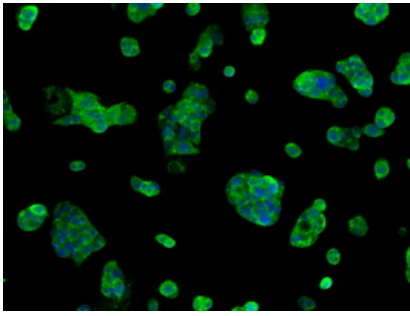
<b>Function</b>	Converts sorbitol to fructose. Part of the polyol pathway that plays an important role in sperm physiology. May play a role in the sperm motility by providing an energetic source for sperm.
<b>Tissue specificity</b>	Expressed in kidney and epithelial cells of both benign and malignant prostate tissue. Expressed in epididymis (at protein level).
<b>Sequence similarities</b>	Belongs to the zinc-containing alcohol dehydrogenase family.
<b>Cellular localization</b>	Mitochondrion membrane. Cell projection > cilium > flagellum. Associated with mitochondria of the midpiece and near the plasma membrane in the principal piece of the flagellum. Also found in the epididymosome, secreted by the epididymal epithelium and that transfers proteins from the epididymal fluid to the sperm surface.

## Images



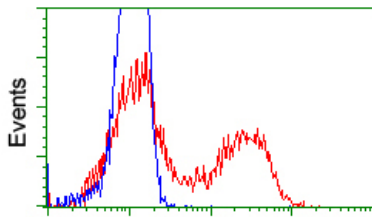
ab118063 at 1/100 dilution staining Sorbitol Dehydrogenase in COS7 cells transiently transfected by pCMV6-ENTRY Sorbitol Dehydrogenase by Immunofluorescence.

Immunocytochemistry/ Immunofluorescence - Anti-Sorbitol Dehydrogenase antibody [17E7] (ab118063)



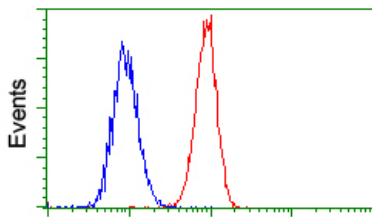
Immunocytochemistry/ Immunofluorescence - Anti-Sorbitol Dehydrogenase antibody [17E7] (ab118063)

ab118063 at 1/100 dilution staining Sorbitol Dehydrogenase in HepG2 cells by Immunofluorescence.



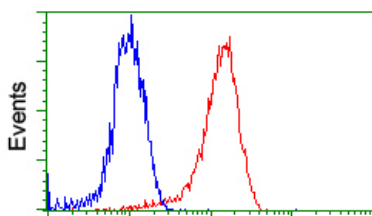
Flow Cytometry - Anti-Sorbitol Dehydrogenase antibody [17E7] (ab118063)

ab118063 at 1/100 dilution staining Sorbitol Dehydrogenase in HEK293T cells transfected with either pCMV6-ENTRY Sorbitol Dehydrogenase (Red) or empty vector control plasmid (Blue) by Flow cytometry.



Flow Cytometry - Anti-Sorbitol Dehydrogenase antibody [17E7] (ab118063)

ab118063 at 1/100 dilution staining Sorbitol Dehydrogenase in HeLa cells by Flow cytometry (Red) compared to a nonspecific negative control antibody (Blue).



Flow Cytometry - Anti-Sorbitol Dehydrogenase antibody [17E7] (ab118063)

ab118063 at 1/100 dilution staining Sorbitol Dehydrogenase in Jurkat cells by Flow cytometry (Red) compared to a nonspecific negative control antibody (Blue).

**Please note:** All products are "FOR RESEARCH USE ONLY AND ARE NOT INTENDED FOR DIAGNOSTIC OR THERAPEUTIC USE"

## **Our Abpromise to you: Quality guaranteed and expert technical support**

---

- Replacement or refund for products not performing as stated on the datasheet
- Valid for 12 months from date of delivery
- Response to your inquiry within 24 hours
  
- We provide support in Chinese, English, French, German, Japanese and Spanish
- Extensive multi-media technical resources to help you
- We investigate all quality concerns to ensure our products perform to the highest standards

If the product does not perform as described on this datasheet, we will offer a refund or replacement. For full details of the Abpromise, please visit <https://www.abcam.com/abpromise> or contact our technical team.

## **Terms and conditions**

---

- Guarantee only valid for products bought direct from Abcam or one of our authorized distributors