


Product datasheet

Anti-ENAM antibody ab118134

1 References 2 Images

Overview

Product name	Anti-ENAM antibody
Description	Mouse monoclonal to ENAM
Host species	Mouse
Tested applications	Suitable for: WB, ELISA, Sandwich ELISA
Species reactivity	Reacts with: Recombinant fragment Predicted to work with: Human 
Immunogen	Recombinant fragment, corresponding to amino acids 1043-1142 of Human ENAM with proprietary tag (NP_114095).

Properties

Form	Liquid
Storage instructions	Shipped at 4°C. Upon delivery aliquot and store at -20°C or -80°C. Avoid repeated freeze / thaw cycles.
Storage buffer	pH: 7.20 Constituent: 99% PBS
Purity	Protein A purified
Clonality	Monoclonal
Isotype	IgG2a
Light chain type	kappa

Applications

Our [Abpromise guarantee](#) covers the use of **ab118134** in the following tested applications.

The application notes include recommended starting dilutions; optimal dilutions/concentrations should be determined by the end user.

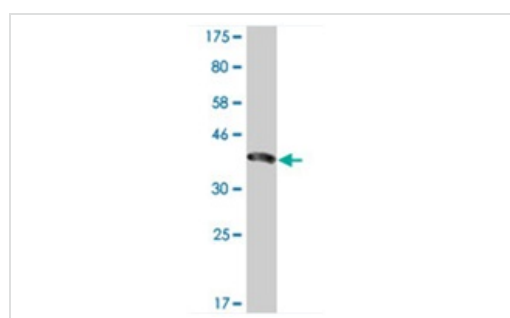
Application	Abreviews	Notes
WB		Use a concentration of 1 - 5 µg/ml. Predicted molecular weight: 129 kDa. This antibody has only been tested in WB against the recombinant fragment used as immunogen. We have no data on the detection of endogenous protein.

Application	Abreviews	Notes
ELISA		Use at an assay dependent dilution.
Sandwich ELISA		Use a concentration of 10 µg/ml.

Target

Function	Involved in the mineralization and structural organization of enamel. Involved in the extension of enamel during the secretory stage of dental enamel formation.
Tissue specificity	Expressed in tooth particularly in odontoblast, ameloblast and cementoblast.
Involvement in disease	<p>Defects in ENAM are the cause of amelogenesis imperfecta hypoplastic type 1B (AI1B) [MIM:104500]. AI1B is an autosomal dominant defect of enamel formation. Clinical manifestations may be variable. Some cases present with generalized enamel hypoplasia resulting in small, smooth, yellow and spaced teeth (smooth hypoplastic AI). Others show horizontal rows of pits, grooves or a hypoplastic area in the enamel (local hypoplastic AI).</p> <p>Defects in ENAM are the cause of amelogenesis imperfecta type 1C (AI1C) [MIM:204650]; also known as amelogenesis imperfecta hypoplastic with or without openbite malocclusion. AI1C is an autosomal recessive defect of dental enamel formation. Teeth show hypoplastic and unmineralized enamel, and a yellow-brown discoloration. Enamel defects can be associated with facial and oral features including vertical dysgnathia and anterior openbite malocclusion.</p>
Cellular localization	Secreted > extracellular space > extracellular matrix.

Images

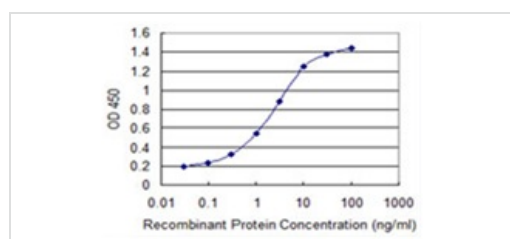


Western blot - Anti-ENAM antibody (ab118134)

Anti-ENAM antibody (ab118134) at 5 µg/ml + recombinant immunogen at 0.2 µg

Predicted band size: 129 kDa

Western blot against tagged recombinant immunogen using ab118134 antibody at 5µg/ml dilution. Predicted band size of immunogen is 37kDa.



Sandwich ELISA - Anti-ENAM antibody (ab118134)

Detection limit for recombinant tagged ENAM is 0.03 ng/ml as a capture antibody.

Our Abpromise to you: Quality guaranteed and expert technical support

- Replacement or refund for products not performing as stated on the datasheet
- Valid for 12 months from date of delivery
- Response to your inquiry within 24 hours

- We provide support in Chinese, English, French, German, Japanese and Spanish
- Extensive multi-media technical resources to help you
- We investigate all quality concerns to ensure our products perform to the highest standards

If the product does not perform as described on this datasheet, we will offer a refund or replacement. For full details of the Abpromise, please visit <https://www.abcam.com/abpromise> or contact our technical team.

Terms and conditions

- Guarantee only valid for products bought direct from Abcam or one of our authorized distributors