

Product datasheet

Anti-PACSIN2 antibody ab118330

1 References 3 Images

Overview

<b>Product name</b>	Anti-PACSIN2 antibody
<b>Description</b>	Mouse monoclonal to PACSIN2
<b>Host species</b>	Mouse
<b>Tested applications</b>	<b>Suitable for:</b> WB, IHC-P, Sandwich ELISA
<b>Species reactivity</b>	<b>Reacts with:</b> Human
<b>Immunogen</b>	Recombinant fragment, corresponding to amino acids 368-429 of Human PACSIN2 (NP_009160) with a proprietary tag.
<b>Positive control</b>	Recombinant Protein. Human kidney tissue.

Properties

<b>Form</b>	Liquid
<b>Storage instructions</b>	Shipped at 4°C. Upon delivery aliquot and store at -20°C or -80°C. Avoid repeated freeze / thaw cycles.
<b>Storage buffer</b>	pH: 7.20 Constituent: 99% PBS
<b>Purity</b>	Protein A purified
<b>Clonality</b>	Monoclonal
<b>Isotype</b>	IgG2a
<b>Light chain type</b>	kappa

Applications

Our [Abpromise guarantee](#) covers the use of **ab118330** in the following tested applications.

The application notes include recommended starting dilutions; optimal dilutions/concentrations should be determined by the end user.

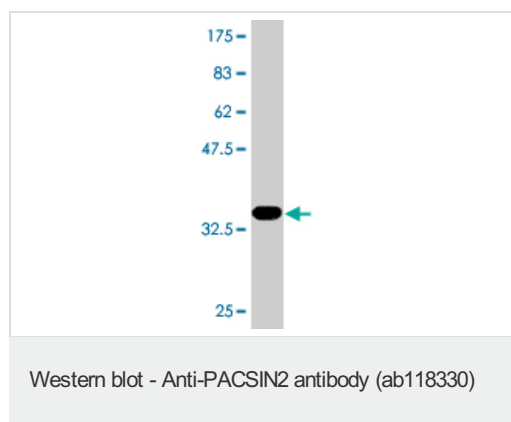
Application	Abreviews	Notes
WB		Use a concentration of 1 - 5 µg/ml. Predicted molecular weight: 56 kDa. This antibody has only been tested in WB against the recombinant fragment used as immunogen. We have no data on the detection of endogenous protein.

Application	Abreviews	Notes
IHC-P		Use a concentration of 3 µg/ml. Perform heat mediated antigen retrieval with citrate buffer pH 6 before commencing with IHC staining protocol.
Sandwich ELISA		Use a concentration of 10 µg/ml. as capture antibody.

## Target

<b>Function</b>	May play a role in vesicle formation and transport.
<b>Tissue specificity</b>	Ubiquitously expressed.
<b>Sequence similarities</b>	Belongs to the PACSIN family. Contains 1 FCH domain. Contains 1 SH3 domain.
<b>Post-translational modifications</b>	Phosphorylated by casein kinase 2 (CK2) and protein kinase C (PKC).
<b>Cellular localization</b>	Cytoplasmic vesicle. Vesicle-like cytoplasmic distribution.

## Images

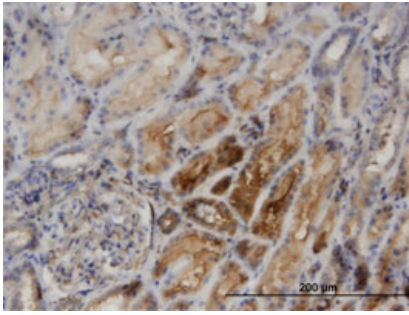


Anti-PACSIN2 antibody (ab118330) at 5 µg/ml + Recombinant immunogen at 0.2 µg

Developed using the ECL technique.

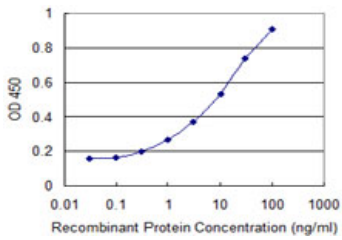
**Predicted band size:** 56 kDa

Western blot against tagged recombinant immunogen using ab118330 antibody at 5µg/ml dilution. Predicted band size of immunogen is 33 kDa.



ab118330 at 3 μg/ml staining PACSIN2 in Formalin-Fixed, Paraffin-Embedded Human Kidney tissue by Immunohistochemistry.

Immunohistochemistry (Formalin/PFA-fixed paraffin-embedded sections) - Anti-PACSIN2 antibody (ab118330)



ab118330 at 10 μg/ml as a capture antibody. The detection limit for recombinant tagged PACSIN2 is 0.1 ng/ml.

Sandwich ELISA - Anti-PACSIN2 antibody (ab118330)

**Please note:** All products are "FOR RESEARCH USE ONLY AND ARE NOT INTENDED FOR DIAGNOSTIC OR THERAPEUTIC USE"

### Our Abpromise to you: Quality guaranteed and expert technical support

- Replacement or refund for products not performing as stated on the datasheet
- Valid for 12 months from date of delivery
- Response to your inquiry within 24 hours
- We provide support in Chinese, English, French, German, Japanese and Spanish
- Extensive multi-media technical resources to help you
- We investigate all quality concerns to ensure our products perform to the highest standards

If the product does not perform as described on this datasheet, we will offer a refund or replacement. For full details of the Abpromise, please visit <https://www.abcam.com/abpromise> or contact our technical team.

### Terms and conditions

- Guarantee only valid for products bought direct from Abcam or one of our authorized distributors