

Product datasheet

Anti-Caspase-6 / CASP-6 antibody ab118504

2 Images

Overview

Product name	Anti-Caspase-6 / CASP-6 antibody
Description	Rabbit polyclonal to Caspase-6 / CASP-6
Host species	Rabbit
Tested applications	Suitable for: WB, IHC-P, ICC
Species reactivity	Reacts with: Human Does not react with: Mouse, Rat
Immunogen	Synthetic peptide corresponding to Human Caspase-6 (N terminal) conjugated to Keyhole Limpet Haemocyanin (KLH). Database link: P55212
Positive control	Human skeletal muscle and kidney tissues.

Properties

Form	Liquid
Storage instructions	Shipped at 4°C. Store at +4°C short term (1-2 weeks). Upon delivery aliquot. Store at -20°C. Avoid freeze / thaw cycle.
Storage buffer	Preservative: 0.02% Sodium azide Constituent: 99% PBS
Purity	Protein A purified
Clonality	Polyclonal
Isotype	IgG

Applications

Our [Abpromise guarantee](#) covers the use of **ab118504** in the following tested applications.

The application notes include recommended starting dilutions; optimal dilutions/concentrations should be determined by the end user.

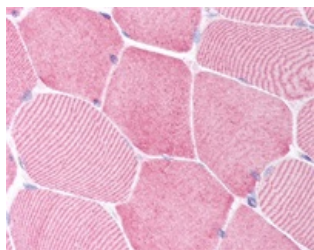
Application	Abreviews	Notes
WB		Use a concentration of 0.5 - 2 µg/ml. Predicted molecular weight: 33 kDa.

Application	Abreviews	Notes
IHC-P		Use a concentration of 5 µg/ml. Perform heat mediated antigen retrieval with citrate buffer pH 6 before commencing with IHC staining protocol.
ICC		Use at an assay dependent concentration.

Target

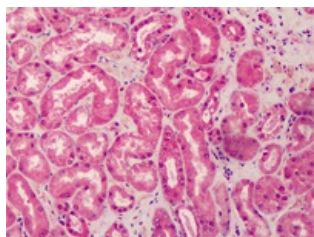
Function	Involved in the activation cascade of caspases responsible for apoptosis execution. Cleaves poly(ADP-ribose) polymerase in vitro, as well as lamins. Overexpression promotes programmed cell death.
Sequence similarities	Belongs to the peptidase C14A family.
Post-translational modifications	Cleavages by caspase-3, caspase-8 or -10 generate the two active subunits.
Cellular localization	Cytoplasm.

Images



Immunohistochemistry (Formalin/PFA-fixed paraffin-embedded sections) - Anti-Caspase-6 antibody (ab118504)

ab118504, at 5 µg/ml, staining Caspase-6 in formalin-fixed, paraffin-embedded Human Skeletal Muscle tissue by Immunohistochemistry using a biotinylated goat anti-rabbit IgG secondary antibody, alkaline phosphatase-streptavidin and chromogen.



Immunohistochemistry (Formalin/PFA-fixed paraffin-embedded sections) - Anti-Caspase-6 antibody (ab118504)

ab118504, at 5 µg/ml, staining Caspase-6 in formalin-fixed, paraffin-embedded Human Kidney tissue by Immunohistochemistry using a biotinylated goat anti-rabbit IgG secondary antibody, alkaline phosphatase-streptavidin and chromogen.

Please note: All products are "FOR RESEARCH USE ONLY AND ARE NOT INTENDED FOR DIAGNOSTIC OR THERAPEUTIC USE"

Our Abpromise to you: Quality guaranteed and expert technical support

- Replacement or refund for products not performing as stated on the datasheet
- Valid for 12 months from date of delivery
- Response to your inquiry within 24 hours

- We provide support in Chinese, English, French, German, Japanese and Spanish
- Extensive multi-media technical resources to help you
- We investigate all quality concerns to ensure our products perform to the highest standards

If the product does not perform as described on this datasheet, we will offer a refund or replacement. For full details of the Abpromise, please visit <https://www.abcam.com/abpromise> or contact our technical team.

Terms and conditions

- Guarantee only valid for products bought direct from Abcam or one of our authorized distributors