

Product datasheet

Anti-Cyclin B1 antibody [GNS1] ab11926

2 References 1 Image

Overview

Product name	Anti-Cyclin B1 antibody [GNS1]
Description	Mouse monoclonal [GNS1] to Cyclin B1
Host species	Mouse
Tested applications	Suitable for: ICC/IF, WB
Species reactivity	Reacts with: Human
Immunogen	Recombinant protein corresponding to human Cyclin B1.
Positive control	K-562 nuclear extract.

Properties

Form	Liquid
Storage instructions	Shipped at 4°C. Upon delivery aliquot and store at -20°C or -80°C. Avoid repeated freeze / thaw cycles.
Storage buffer	Preservative: 0.1% Sodium Azide, 0.2% Gelatin, 0.01% Thimerosal Constituents: PBS, Tissue Culture Supernatant
Purity	Tissue culture supernatant
Clonality	Monoclonal
Clone number	GNS1
Isotype	IgG1

Applications

Our [Abpromise guarantee](#) covers the use of **ab11926** in the following tested applications.

The application notes include recommended starting dilutions; optimal dilutions/concentrations should be determined by the end user.

Application	Abreviews	Notes
ICC/IF		
WB		

Application notes

ICC/IF: Suggested working dilution of 1/100 (see PMID: 16868023).
WB: 1/500 - 1/1000. Predicted molecular weight: 58 kDa.

Not tested in other applications.

Optimal dilutions/concentrations should be determined by the end user.

Target

Function

Essential for the control of the cell cycle at the G2/M (mitosis) transition.

Sequence similarities

Belongs to the cyclin family. Cyclin AB subfamily.

Developmental stage

Accumulates steadily during G2 and is abruptly destroyed at mitosis.

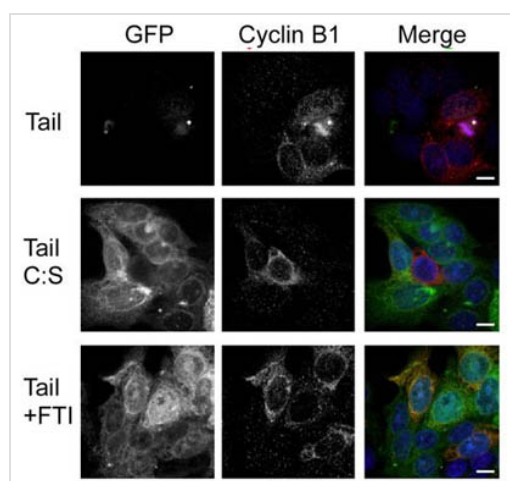
Post-translational modifications

Ubiquitinated by the SCF(NIPA) complex during interphase, leading to its destruction. Not ubiquitinated during G2/M phases.

Cellular localization

Cytoplasm. Nucleus. Cytoplasm > cytoskeleton > centrosome.

Images



Immunocytochemistry/ Immunofluorescence - Anti-Cyclin B1 antibody [GNS1] (ab11926)

Image from Gurden D. J. Mark et.al., J Cell Sci 123:321-30 (2010), Fig 4E.

ab11926 at 1/100 dilution staining Cyclin B1 in human DLD1 cells by Immunocytochemistry/ Immunofluorescence. Before ICC/IF DLD1 cells were transfected with GFP conjugated Cenp-E tail protein, GFP conjugated Cenp-E tail protein harbouring C:S (cysteine to serine) mutations and GFP-Cenp-E containing farnesyl transferase inhibitors treated cells. 5×10^4 cells were seeded on glass coverslips, cultured for 24 to 48 hours then fixed for five minutes at room temperature in 1% formaldehyde, freshly diluted from a 40% stock in PBS. Following washes in PBST (0.1% Triton X-100), the cells were blocked in PBST plus 5% non-fat dried milk for 20 minutes then incubated for 30 minutes with primary antibody. A Cy3 conjugated Donkey anti-mouse was used as secondary. The primary antibody shows red color staining in image.

Please note: All products are "FOR RESEARCH USE ONLY AND ARE NOT INTENDED FOR DIAGNOSTIC OR THERAPEUTIC USE"

Our Abpromise to you: Quality guaranteed and expert technical support

- Replacement or refund for products not performing as stated on the datasheet
- Valid for 12 months from date of delivery
- Response to your inquiry within 24 hours

- We provide support in Chinese, English, French, German, Japanese and Spanish
- Extensive multi-media technical resources to help you
- We investigate all quality concerns to ensure our products perform to the highest standards

If the product does not perform as described on this datasheet, we will offer a refund or replacement. For full details of the Abpromise, please visit <https://www.abcam.com/abpromise> or contact our technical team.

Terms and conditions

- Guarantee only valid for products bought direct from Abcam or one of our authorized distributors