

Product datasheet

Anti-PARP antibody [10H] ab119484

1 References 1 Image

Overview

<b>Product name</b>	Anti-PARP antibody [10H]
<b>Description</b>	Mouse monoclonal [10H] to PARP
<b>Host species</b>	Mouse
<b>Specificity</b>	Recognizes poly(ADP-ribose) polymer (pADPr) synthesized by a variety of poly(ADP-ribose) polymerases (PARP)-related enzymes including PARP1, -2, -3, tankyrase, vPARP, sPARP and others. Does not recognize full length PARP1 (116 kDa), as well as the large fragment (89 kDa) of PARP1 resulting from caspase cleavage.
<b>Tested applications</b>	<b>Suitable for:</b> WB, IP, ELISA, ICC
<b>Species reactivity</b>	<b>Reacts with:</b> Rat <b>Predicted to work with:</b> a wide range of other species ▲
<b>Immunogen</b>	PARP protein mixed with methylated BSA (NP_001609.2).
<b>Positive control</b>	Rat liver tissue.

Properties

<b>Form</b>	Liquid
<b>Storage instructions</b>	Shipped at 4°C. Store at +4°C short term (1-2 weeks). Upon delivery aliquot. Store at -20°C or -80°C. Avoid freeze / thaw cycle.
<b>Storage buffer</b>	pH: 7.40 Preservative: 0.02% Sodium azide Constituents: 1% BSA, 0.88% Sodium chloride, 0.24% Tris
<b>Purity</b>	Protein A purified
<b>Purification notes</b>	Purified from mouse ascites by protein A chromatography.
<b>Clonality</b>	Monoclonal
<b>Clone number</b>	10H
<b>Isotype</b>	IgG3
<b>Light chain type</b>	kappa

Applications

Our [Abpromise guarantee](#) covers the use of **ab119484** in the following tested applications.

The application notes include recommended starting dilutions; optimal dilutions/concentrations should be determined by the end user.

Application	Abreviews	Notes
WB		Use a concentration of 2 - 10 µg/ml. Predicted molecular weight: 113 kDa.
IP		Use at an assay dependent dilution.
ELISA		Use at an assay dependent dilution.
ICC		Use a concentration of 5 - 20 µg/ml.

## Target

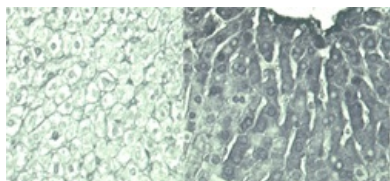
**Function** Involved in the base excision repair (BER) pathway, by catalyzing the poly(ADP-ribosyl)ation of a limited number of acceptor proteins involved in chromatin architecture and in DNA metabolism. This modification follows DNA damages and appears as an obligatory step in a detection/signaling pathway leading to the reparation of DNA strand breaks. Mediates the poly(ADP-ribosyl)ation of APLF and CHFR. Positively regulates the transcription of MTUS1 and negatively regulates the transcription of MTUS2/TIP150.

**Sequence similarities** Contains 1 BRCT domain.  
Contains 1 PARP alpha-helical domain.  
Contains 1 PARP catalytic domain.  
Contains 2 PARP-type zinc fingers.

**Post-translational modifications** Phosphorylated by PRKDC. Phosphorylated upon DNA damage, probably by ATM or ATR. Poly-ADP-ribosylated by PARP2. Poly-ADP-ribosylation mediates the recruitment of CHD1L to DNA damage sites.  
S-nitrosylated, leading to inhibit transcription regulation activity.

**Cellular localization** Nucleus.

## Images



Immunocytochemistry - Anti-PARP antibody [10H] (ab119484)

ab119484 at 5-20µg/ml staining PARP in Rat liver by Immunocytochemistry.  
Rats were injected i.p. with diethylnitrosamine (200 mg/kg), livers were removed and rapidly processed 10 hr later, at peak polymer induction (right image). Left image shows untreated liver tissue.

**Please note:** All products are "FOR RESEARCH USE ONLY AND ARE NOT INTENDED FOR DIAGNOSTIC OR THERAPEUTIC USE"

**Our Abpromise to you: Quality guaranteed and expert technical support**

- Replacement or refund for products not performing as stated on the datasheet
- Valid for 12 months from date of delivery
- Response to your inquiry within 24 hours
  
- We provide support in Chinese, English, French, German, Japanese and Spanish
- Extensive multi-media technical resources to help you
- We investigate all quality concerns to ensure our products perform to the highest standards

If the product does not perform as described on this datasheet, we will offer a refund or replacement. For full details of the Abpromise, please visit <https://www.abcam.com/abpromise> or contact our technical team.

### **Terms and conditions**

---

- Guarantee only valid for products bought direct from Abcam or one of our authorized distributors