




Product datasheet

Anti-HP1 gamma antibody ab122974

1 Image

Overview

<b>Product name</b>	Anti-HP1 gamma antibody
<b>Description</b>	Rabbit polyclonal to HP1 gamma
<b>Host species</b>	Rabbit
<b>Tested applications</b>	<b>Suitable for:</b> WB, ICC/IF, ChIP
<b>Species reactivity</b>	<b>Reacts with:</b> Hamster, Human <b>Predicted to work with:</b> Mouse, Chicken, Xenopus laevis, Drosophila melanogaster, Zebrafish, Xenopus tropicalis 
<b>Immunogen</b>	Synthetic peptide corresponding to Human HP1 gamma aa 174-183 (C terminal). Sequence: WHSCPEDEAQ-C  Database link: <a href="#">Q13185</a>   <a href="#">Run BLAST with</a>  <a href="#">Run BLAST with</a>
<b>Positive control</b>	MCF7 cell extract

Properties

<b>Form</b>	Liquid
<b>Storage instructions</b>	Shipped at 4°C. Upon delivery aliquot and store at -20°C or -80°C. Avoid repeated freeze / thaw cycles.
<b>Storage buffer</b>	pH: 7.40 Constituents: 1.68% Sodium phosphate, 50% Glycerol
<b>Purity</b>	Immunogen affinity purified
<b>Purification notes</b>	sterilized by filtration
<b>Clonality</b>	Polyclonal
<b>Isotype</b>	IgG

Applications

Our [Abpromise guarantee](#) covers the use of **ab122974** in the following tested applications.

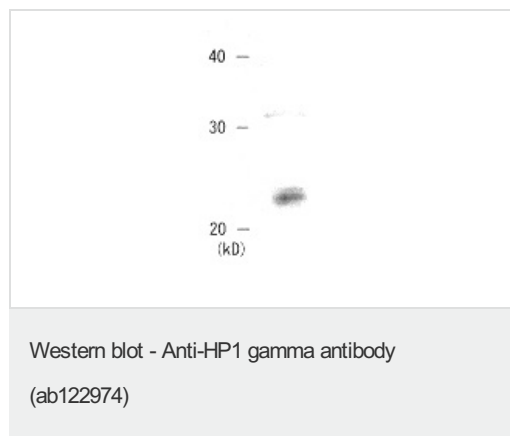
The application notes include recommended starting dilutions; optimal dilutions/concentrations should be determined by the end user.

Application	Abreviews	Notes
WB		1/2000 - 1/10000. Predicted molecular weight: 20 kDa.
ICC/IF		Use at an assay dependent concentration.
ChIP		Use at an assay dependent concentration.

## Target

<b>Function</b>	Seems to be involved in transcriptional silencing in heterochromatin-like complexes. Recognizes and binds histone H3 tails methylated at 'Lys-9', leading to epigenetic repression. May contribute to the association of the heterochromatin with the inner nuclear membrane through its interaction with lamin B receptor (LBR). Involved in the formation of functional kinetochore through interaction with MIS12 complex proteins.
<b>Sequence similarities</b>	Contains 2 chromo domains.
<b>Post-translational modifications</b>	Phosphorylated by PIM1. Phosphorylated during interphase and possibly hyper-phosphorylated during mitosis.
<b>Cellular localization</b>	Nucleus. Associates with euchromatin and is largely excluded from constitutive heterochromatin. May be associated with microtubules and mitotic poles during mitosis.

## Images



Anti-HP1 gamma antibody (ab122974) at 1/2000 dilution + Baby Hamster Kidney cells

**Predicted band size:** 20 kDa

**Please note:** All products are "FOR RESEARCH USE ONLY AND ARE NOT INTENDED FOR DIAGNOSTIC OR THERAPEUTIC USE"

## Our Abpromise to you: Quality guaranteed and expert technical support

- Replacement or refund for products not performing as stated on the datasheet
- Valid for 12 months from date of delivery
- Response to your inquiry within 24 hours
- We provide support in Chinese, English, French, German, Japanese and Spanish

- Extensive multi-media technical resources to help you
- We investigate all quality concerns to ensure our products perform to the highest standards

If the product does not perform as described on this datasheet, we will offer a refund or replacement. For full details of the Abpromise, please visit <https://www.abcam.com/abpromise> or contact our technical team.

### **Terms and conditions**

---

- Guarantee only valid for products bought direct from Abcam or one of our authorized distributors