

Product datasheet

Anti-LDHAL6A antibody ab123086

1 Image

Overview

| | |
|----------------------------|---|
| Product name | Anti-LDHAL6A antibody |
| Description | Rabbit polyclonal to LDHAL6A |
| Host species | Rabbit |
| Tested applications | Suitable for: WB |
| Species reactivity | Reacts with: Human Predicted to work with: Cow, Cat, Pig, Zebrafish |
| Immunogen | Synthetic peptide corresponding to a region within C terminal amino acids 185-234 (CHGLILGEHGDSSVPVWSGVNIAGVPLKDLNPDIGTDKDPQWENVHKK V) of Human LDHAL6A (NP_659409). Run BLAST with ExPASy Run BLAST with NCBI |
| Positive control | HepG2 cell lysate |

Properties

| | |
|-----------------------------|--|
| Form | Liquid |
| Storage instructions | Shipped at 4°C. Upon delivery aliquot and store at -20°C. Avoid repeated freeze / thaw cycles. |
| Storage buffer | Constituents: 97% PBS, 2% Sucrose |
| Purity | Immunogen affinity purified |
| Clonality | Polyclonal |
| Isotype | IgG |

Applications

Our [Abpromise guarantee](#) covers the use of **ab123086** in the following tested applications.

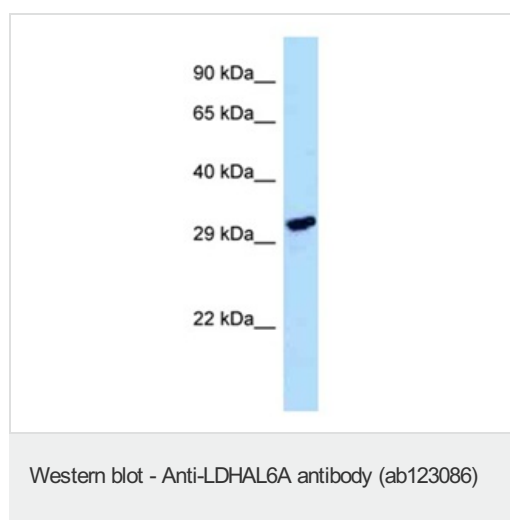
The application notes include recommended starting dilutions; optimal dilutions/concentrations should be determined by the end user.

| Application | Abreviews | Notes |
|-------------|-----------|--|
| WB | | Use a concentration of 1 µg/ml. Predicted molecular weight: 37 kDa. Good results were obtained when blocked with 5% non-fat dry milk in 0.05% PBS-T. |

Target

| | |
|------------------------------|--|
| Function | Displays an lactate dehydrogenase activity. Significantly increases the transcriptional activity of JUN, when overexpressed. |
| Tissue specificity | Testis-specific. |
| Pathway | Fermentation; pyruvate fermentation to lactate; (S)-lactate from pyruvate: step 1/1. |
| Sequence similarities | Belongs to the LDH/MDH superfamily. LDH family. |
| Cellular localization | Cytoplasm. |

Images



Anti-LDHAL6A antibody (ab123086) at 1 μ g/ml + HepG2 cell lysate at 10 μ g

Predicted band size: 37 kDa

Please note: All products are "FOR RESEARCH USE ONLY AND ARE NOT INTENDED FOR DIAGNOSTIC OR THERAPEUTIC USE"

Our Abpromise to you: Quality guaranteed and expert technical support

- Replacement or refund for products not performing as stated on the datasheet
- Valid for 12 months from date of delivery
- Response to your inquiry within 24 hours
- We provide support in Chinese, English, French, German, Japanese and Spanish
- Extensive multi-media technical resources to help you
- We investigate all quality concerns to ensure our products perform to the highest standards

If the product does not perform as described on this datasheet, we will offer a refund or replacement. For full details of the Abpromise, please visit <https://www.abcam.com/abpromise> or contact our technical team.

Terms and conditions

- Guarantee only valid for products bought direct from Abcam or one of our authorized distributors