

Product datasheet

Anti-PPEF2 antibody ab123286

1 Image

Overview

<b>Product name</b>	Anti-PPEF2 antibody
<b>Description</b>	Rabbit polyclonal to PPEF2
<b>Host species</b>	Rabbit
<b>Tested applications</b>	<b>Suitable for:</b> WB
<b>Species reactivity</b>	<b>Reacts with:</b> Human
<b>Immunogen</b>	Synthetic peptide conjugated to KLH, corresponding to a region within internal sequence amino acids 303-333 of Human PPEF2 (NP_006230.2).
<b>Positive control</b>	HL60 cell line lysates.

Properties

<b>Form</b>	Liquid
<b>Storage instructions</b>	Shipped at 4°C. Store at 4°C (up to 6 months). Store at -20°C long term.
<b>Storage buffer</b>	Preservative: 0.09% Sodium azide Constituent: 99% PBS
<b>Purity</b>	Immunogen affinity purified
<b>Purification notes</b>	ab123286 is purified through a protein A column, followed by peptide affinity purification.
<b>Clonality</b>	Polyclonal
<b>Isotype</b>	IgG

Applications

Our [Abpromise guarantee](#) covers the use of **ab123286** in the following tested applications.

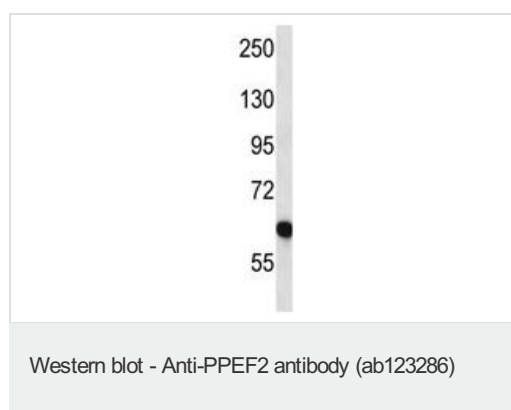
The application notes include recommended starting dilutions; optimal dilutions/concentrations should be determined by the end user.

Application	Abreviews	Notes
WB		1/100 - 1/500. Predicted molecular weight: 69 kDa.

Target

<b>Function</b>	May play a role in phototransduction. May dephosphorylate photoactivated rhodopsin. May function as a calcium sensing regulator of ionic currents, energy production or synaptic transmission.
<b>Tissue specificity</b>	Retinal specific.
<b>Sequence similarities</b>	Belongs to the PPP phosphatase family. Contains 3 EF-hand domains. Contains 1 IQ domain.
<b>Cellular localization</b>	Cytoplasm. Cell projection > cilium > photoreceptor outer segment. Photoreceptor inner segment. Localized to photoreceptors, PPEF-2(L) is at least 2 fold more abundant in rod inner segments than in the outer segments.

## Images



Anti-PPEF2 antibody (ab123286) at 1/100 dilution + HL60 cell line lysates at 35 µg

Developed using the ECL technique.

**Predicted band size:** 69 kDa

ab123286 is recognizing isoform 2 of Human PPEF2.

**Please note:** All products are "FOR RESEARCH USE ONLY AND ARE NOT INTENDED FOR DIAGNOSTIC OR THERAPEUTIC USE"

## Our Abpromise to you: Quality guaranteed and expert technical support

- Replacement or refund for products not performing as stated on the datasheet
- Valid for 12 months from date of delivery
- Response to your inquiry within 24 hours
- We provide support in Chinese, English, French, German, Japanese and Spanish
- Extensive multi-media technical resources to help you
- We investigate all quality concerns to ensure our products perform to the highest standards

If the product does not perform as described on this datasheet, we will offer a refund or replacement. For full details of the Abpromise, please visit <https://www.abcam.com/abpromise> or contact our technical team.

## Terms and conditions

- Guarantee only valid for products bought direct from Abcam or one of our authorized distributors