

Product datasheet

Anti-KIAA1609 antibody [12B1] ab123931

13 Images

Overview

Product name	Anti-KIAA1609 antibody [12B1]
Description	Mouse monoclonal [12B1] to KIAA1609
Host species	Mouse
Tested applications	Suitable for: WB, IHC-P, ICC/IF
Species reactivity	Reacts with: Human
Immunogen	Recombinant full length Human KIAA1609 produced in HEK293T cells (NP_065998).
Positive control	HEK293T cells transfected with pCMV6-ENTRY KIAA1609 cDNA; Human colon, colon adenocarcinoma, kidney, liver, lung, ovary adenocarcinoma, pancreas, thyroid carcinoma, endometrium, prostate and prostate carcinoma tissues; COS7 cells transiently transfected by pCMV6-ENTRY KIAA1609.
General notes	Dilute in PBS (pH7.3) before use. Stable for 12 months from date of receipt.

Properties

Form	Liquid
Storage instructions	Shipped at 4°C. Upon delivery aliquot and store at -20°C. Avoid repeated freeze / thaw cycles.
Storage buffer	pH: 7.30 Preservative: 0.02% Sodium azide Constituents: 48% PBS, 50% Glycerol, 1% BSA
Purity	Protein G purified
Purification notes	ab123931 is purified from Mouse ascites fluid by affinity chromatography.
Clonality	Monoclonal
Clone number	12B1
Isotype	IgG1

Applications

Our [Abpromise guarantee](#) covers the use of **ab123931** in the following tested applications.

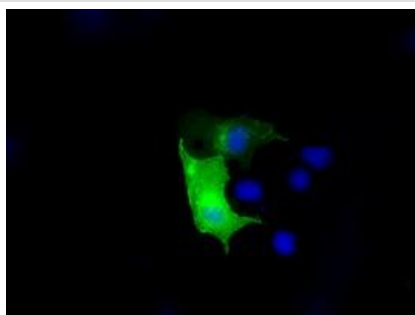
The application notes include recommended starting dilutions; optimal dilutions/concentrations should be determined by the end user.

Application	Abreviews	Notes
WB		1/2000. Predicted molecular weight: 50 kDa.
IHC-P		1/50.
ICC/IF		1/100.

Target

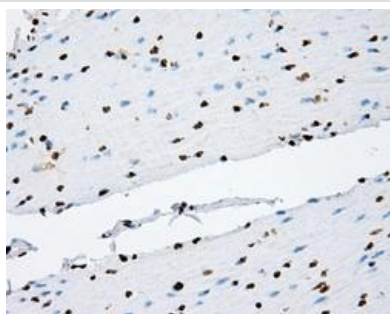
Sequence similarities Contains 1 TLD domain.

Images



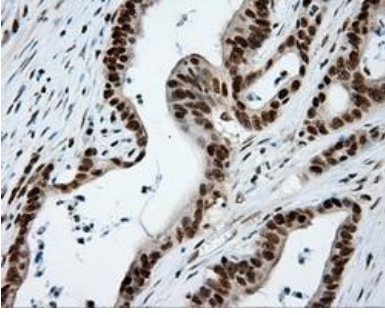
ab123931 at 1/100 dilution staining KIAA1609 in COS7 cells transiently transfected with pCMV6-ENTRY KIAA1609 by Immunofluorescence.

Immunocytochemistry/ Immunofluorescence - Anti-KIAA1609 antibody [12B1] (ab123931)



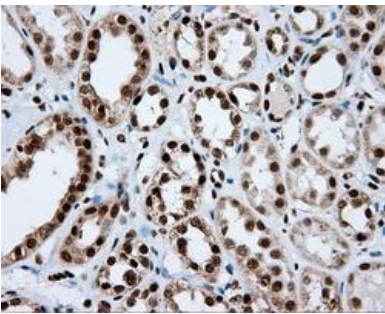
ab123931 at 1/50 dilution staining KIAA1609 in Paraffin-embedded Human Colon tissue by Immunohistochemistry.

Immunohistochemistry (Formalin/PFA-fixed paraffin-embedded sections) - Anti-KIAA1609 antibody [12B1] (ab123931)



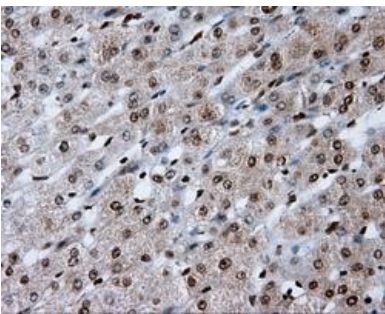
ab123931 at 1/50 dilution staining KIAA1609 in Paraffin-embedded Human Colon adenocarcinoma tissue by Immunohistochemistry.

Immunohistochemistry (Formalin/PFA-fixed paraffin-embedded sections) - Anti-KIAA1609 antibody [12B1] (ab123931)



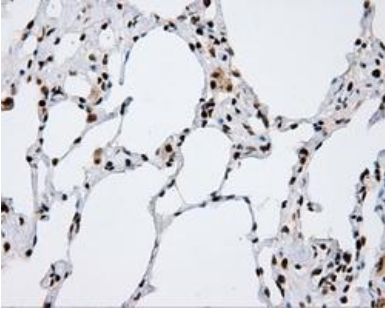
ab123931 at 1/50 dilution staining KIAA1609 in Paraffin-embedded Human Kidney tissue by Immunohistochemistry.

Immunohistochemistry (Formalin/PFA-fixed paraffin-embedded sections) - Anti-KIAA1609 antibody [12B1] (ab123931)



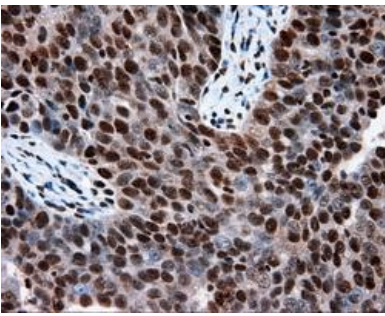
ab123931 at 1/50 dilution staining KIAA1609 in Paraffin-embedded Human Liver tissue by Immunohistochemistry.

Immunohistochemistry (Formalin/PFA-fixed paraffin-embedded sections) - Anti-KIAA1609 antibody [12B1] (ab123931)



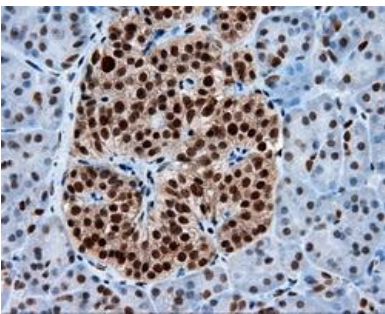
ab123931 at 1/50 dilution staining KIAA1609 in Paraffin-embedded Human Lung tissue by Immunohistochemistry.

Immunohistochemistry (Formalin/PFA-fixed paraffin-embedded sections) - Anti-KIAA1609 antibody [12B1] (ab123931)



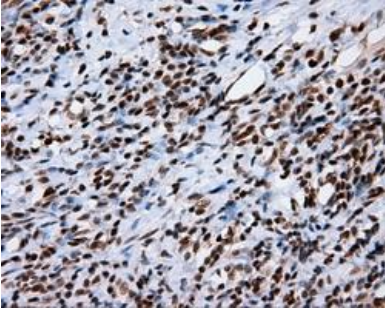
ab123931 at 1/50 dilution staining KIAA1609 in Paraffin-embedded Human Ovary adenocarcinoma tissue by Immunohistochemistry.

Immunohistochemistry (Formalin/PFA-fixed paraffin-embedded sections) - Anti-KIAA1609 antibody [12B1] (ab123931)



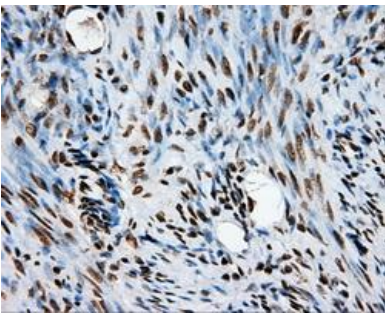
ab123931 at 1/50 dilution staining KIAA1609 in Paraffin-embedded Human Pancreas tissue by Immunohistochemistry.

Immunohistochemistry (Formalin/PFA-fixed paraffin-embedded sections) - Anti-KIAA1609 antibody [12B1] (ab123931)



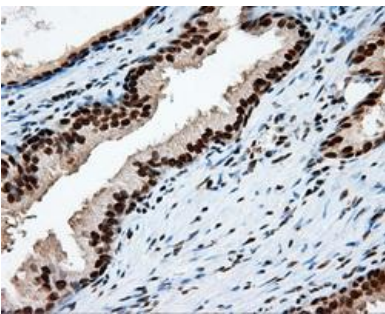
ab123931 at 1/50 dilution staining KIAA1609 in Paraffin-embedded Human Thyroid carcinoma tissue by Immunohistochemistry.

Immunohistochemistry (Formalin/PFA-fixed paraffin-embedded sections) - Anti-KIAA1609 antibody [12B1] (ab123931)



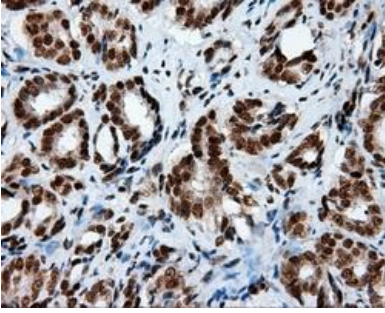
ab123931 at 1/50 dilution staining KIAA1609 in Paraffin-embedded Human Endometrium tissue by Immunohistochemistry.

Immunohistochemistry (Formalin/PFA-fixed paraffin-embedded sections) - Anti-KIAA1609 antibody [12B1] (ab123931)



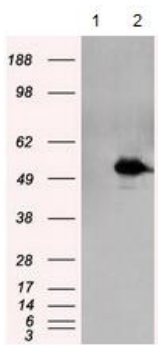
ab123931 at 1/50 dilution staining KIAA1609 in Paraffin-embedded Human Prostate tissue by Immunohistochemistry.

Immunohistochemistry (Formalin/PFA-fixed paraffin-embedded sections) - Anti-KIAA1609 antibody [12B1] (ab123931)



ab123931 at 1/50 dilution staining KIAA1609 in Paraffin-embedded Human Prostate carcinoma tissue by Immunohistochemistry.

Immunohistochemistry (Formalin/PFA-fixed paraffin-embedded sections) - Anti-KIAA1609 antibody [12B1] (ab123931)



All lanes : Anti-KIAA1609 antibody [12B1] (ab123931) at 1/2000 dilution

Lane 1 : HEK293T cells transfected with pCMV6-ENTRY control cDNA

Lane 2 : HEK293T cells transfected with pCMV6-ENTRY KIAA1609 cDNA

Lysates/proteins at 5 µg per lane.

Predicted band size: 50 kDa

Western blot - Anti-KIAA1609 antibody [12B1] (ab123931)

HEK293T cell lysates were generated from transient transfection of the cDNA clone (RC205086)

Please note: All products are "FOR RESEARCH USE ONLY AND ARE NOT INTENDED FOR DIAGNOSTIC OR THERAPEUTIC USE"

Our Abpromise to you: Quality guaranteed and expert technical support

- Replacement or refund for products not performing as stated on the datasheet
- Valid for 12 months from date of delivery
- Response to your inquiry within 24 hours
- We provide support in Chinese, English, French, German, Japanese and Spanish
- Extensive multi-media technical resources to help you
- We investigate all quality concerns to ensure our products perform to the highest standards

If the product does not perform as described on this datasheet, we will offer a refund or replacement. For full details of the Abpromise, please visit <https://www.abcam.com/abpromise> or contact our technical team.

Terms and conditions

- Guarantee only valid for products bought direct from Abcam or one of our authorized distributors