

Product datasheet

Anti-IRF3 antibody [OTI5D2] ab124399

16 Images

Overview

Product name	Anti-IRF3 antibody [OTI5D2]
Description	Mouse monoclonal [OTI5D2] to IRF3
Host species	Mouse
Tested applications	Suitable for: WB, IHC-P
Species reactivity	Reacts with: Human, Monkey
Immunogen	Recombinant full length protein corresponding to Human IRF3. Expressed in 293T cells transfected with human IRF3 expression vector Database link: NP_001562
Positive control	WB: IRF3-transfected HEK293T cell lysate; HeLa, HT29, COS7 and MCF7 cell extracts; IHC-P: Human breast, breast adenocarcinoma, colon adenocarcinoma, kidney carcinoma, lung, Ovary, ovary adenocarcinoma, pancreas, pancreas carcinoma, thyroid, thyroid carcinoma, endometrium, prostate carcinoma and bladder carcinoma tissues
General notes	The clone number has been updated from 5D2 to OTI5D2, both clone numbers name the same clone.

Properties

Form	Liquid
Storage instructions	Shipped at 4°C. Upon delivery aliquot and store at -20°C. Avoid repeated freeze / thaw cycles.
Storage buffer	pH: 7.30 Preservative: 0.02% Sodium azide Constituents: 1% BSA, 50% Glycerol, PBS
Purity	Affinity purified
Purification notes	Purified from cell culture supernatant by affinity chromatography
Clonality	Monoclonal
Clone number	OTI5D2
Isotype	IgG2b

Applications

Our [Abpromise guarantee](#) covers the use of **ab124399** in the following tested applications.

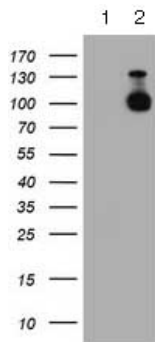
The application notes include recommended starting dilutions; optimal dilutions/concentrations should be determined by the end user.

Application	Abreviews	Notes
WB		1/2000. Predicted molecular weight: 47 kDa.
IHC-P		1/50.

Target

Function	Mediates interferon-stimulated response element (ISRE) promoter activation. Functions as a molecular switch for antiviral activity. DsRNA generated during the course of a viral infection leads to IRF3 phosphorylation on the C-terminal serine/threonine cluster. This induces a conformational change, leading to its dimerization, nuclear localization and association with CREB binding protein (CREBBP) to form dsRNA-activated factor 1 (DRAF1), a complex which activates the transcription of genes under the control of ISRE. The complex binds to the IE and PRDIII regions on the IFN-alpha and IFN-beta promoters respectively. IRF-3 does not have any transcription activation domains.
Tissue specificity	Expressed constitutively in a variety of tissues.
Sequence similarities	Belongs to the IRF family. Contains 1 IRF tryptophan pentad repeat DNA-binding domain.
Post-translational modifications	Constitutively phosphorylated on many serines residues. C-terminal serine/threonine cluster is phosphorylated in response of induction by IKBKE and TBK1. Ser-385 and Ser-386 may be specifically phosphorylated in response to induction. An alternate model propose that the five serine/threonine residues between 396 and 405 are phosphorylated in response to a viral infection. Phosphorylation, and subsequent activation of IRF3 is inhibited by vaccinia virus protein E3. Ubiquitinated; ubiquitination involves RBCK1 leading to proteasomal degradation. Polyubiquitinated; ubiquitination involves TRIM21 leading to proteasomal degradation. ISGylated by HERC5 resulting in sustained IRF3 activation and in the inhibition of IRF3 ubiquitination by disrupting PIN1 binding. The phosphorylation state of IRF3 does not alter ISGylation.
Cellular localization	Cytoplasm. Nucleus. Shuttles between cytoplasmic and nuclear compartments, with export being the prevailing effect. When activated, IRF3 interaction with CREBBP prevents its export to the cytoplasm.

Images



Western blot - Anti-IRF3 antibody [OTI5D2]
(ab124399)

All lanes : Anti-IRF3 antibody [OTI5D2] (ab124399) at 1/2000 dilution

Lane 1 : HEK293T cell lysate transfected with pCMV6-ENTRY control

Lane 2 : HEK293T cell lysate transfected with pCMV6-ENTRY IRF3

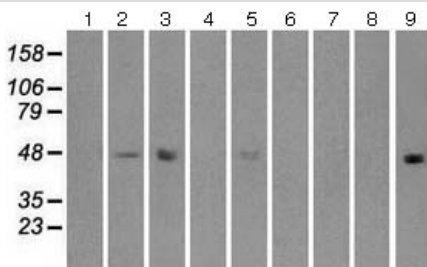
Lysates/proteins at 5 µg per lane.

Predicted band size: 47 kDa



Immunohistochemistry (Formalin/PFA-fixed paraffin-embedded sections) - Anti-IRF3 antibody [OTI5D2]
(ab124399)

ab124399 at 1/50 dilution staining IRF3 in Paraffin-embedded Human breast tissue by Immunohistochemistry.



Western blot - Anti-IRF3 antibody [OTI5D2]
(ab124399)

All lanes : Anti-IRF3 antibody [OTI5D2] (ab124399) at 1/2000 dilution

Lane 1 : HepG2 cell extract

Lane 2 : HeLa cell extract

Lane 3 : HT29 cell extract

Lane 4 : A549 cell extract

Lane 5 : COS7 cell extract

Lane 6 : Jurkat cell extract

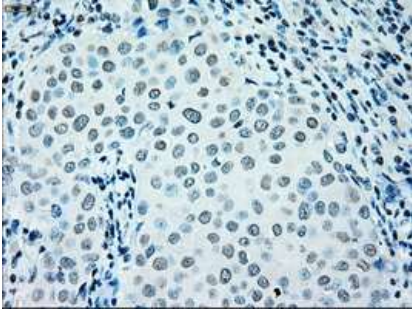
Lane 7 : MDCK cell extract

Lane 8 : PC12 cell extract

Lane 9 : MCF7 cell extract

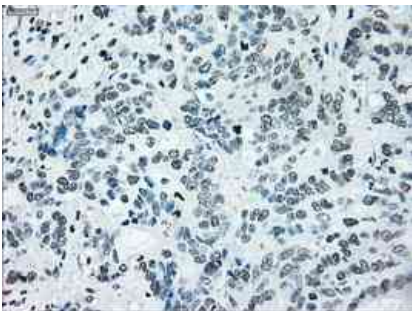
Lysates/proteins at 35 µg per lane.

Predicted band size: 47 kDa



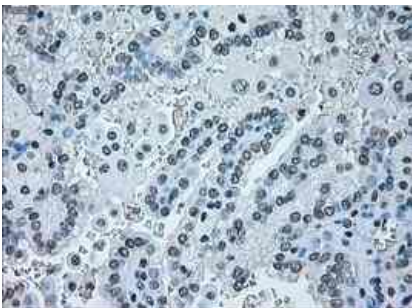
Immunohistochemistry (Formalin/PFA-fixed paraffin-embedded sections) - Anti-IRF3 antibody [OTI5D2] (ab124399)

ab124399 at 1/50 dilution staining IRF3 in Paraffin-embedded Human breast adenocarcinoma tissue by Immunohistochemistry.



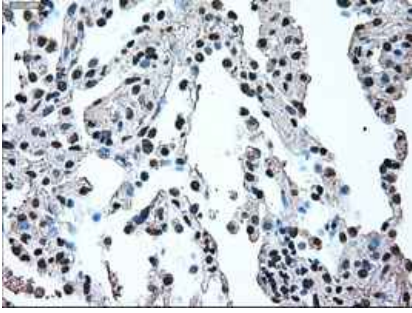
Immunohistochemistry (Formalin/PFA-fixed paraffin-embedded sections) - Anti-IRF3 antibody [OTI5D2] (ab124399)

ab124399 at 1/50 dilution staining IRF3 in Paraffin-embedded Human colon adenocarcinoma tissue by Immunohistochemistry.



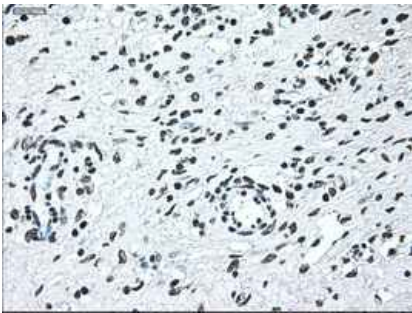
Immunohistochemistry (Formalin/PFA-fixed paraffin-embedded sections) - Anti-IRF3 antibody [OTI5D2] (ab124399)

ab124399 at 1/50 dilution staining IRF3 in Paraffin-embedded Human kidney carcinoma tissue by Immunohistochemistry.



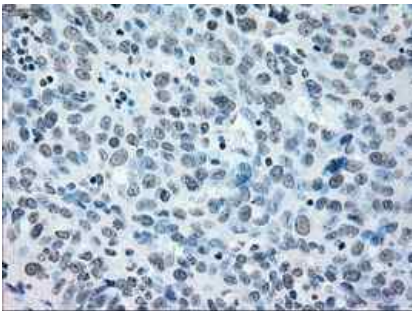
ab124399 at 1/50 dilution staining IRF3 in Paraffin-embedded Human lung tissue by Immunohistochemistry.

Immunohistochemistry (Formalin/PFA-fixed paraffin-embedded sections) - Anti-IRF3 antibody [OT15D2] (ab124399)



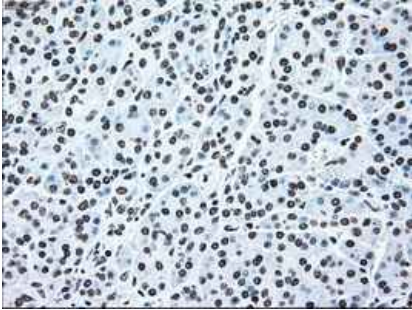
ab124399 at 1/50 dilution staining IRF3 in Paraffin-embedded Human ovary tissue by Immunohistochemistry.

Immunohistochemistry (Formalin/PFA-fixed paraffin-embedded sections) - Anti-IRF3 antibody [OT15D2] (ab124399)



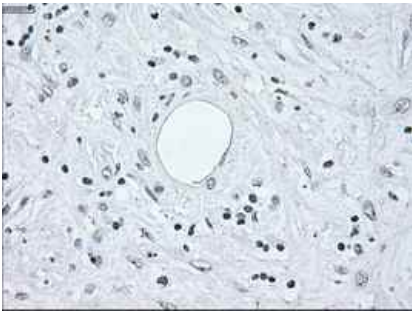
ab124399 at 1/50 dilution staining IRF3 in Paraffin-embedded Human ovary adenocarcinoma tissue by Immunohistochemistry.

Immunohistochemistry (Formalin/PFA-fixed paraffin-embedded sections) - Anti-IRF3 antibody [OT15D2] (ab124399)



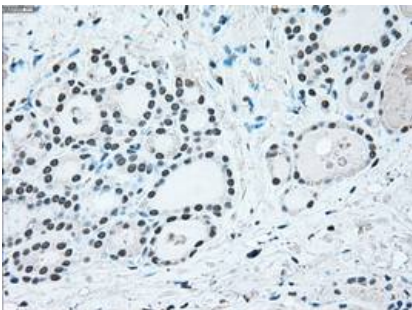
ab124399 at 1/50 dilution staining IRF3 in Paraffin-embedded Human pancreas tissue by Immunohistochemistry.

Immunohistochemistry (Formalin/PFA-fixed paraffin-embedded sections) - Anti-IRF3 antibody [OT15D2] (ab124399)



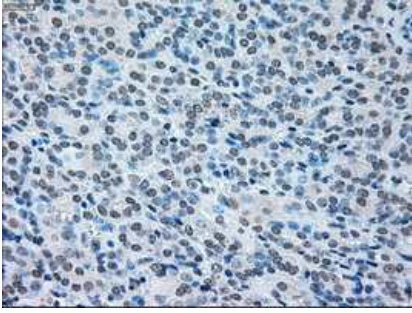
ab124399 at 1/50 dilution staining IRF3 in Paraffin-embedded Human pancreas carcinoma tissue by Immunohistochemistry.

Immunohistochemistry (Formalin/PFA-fixed paraffin-embedded sections) - Anti-IRF3 antibody [OT15D2] (ab124399)



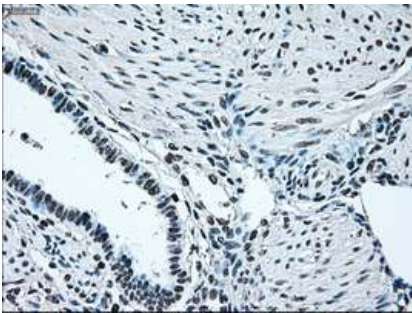
ab124399 at 1/50 dilution staining IRF3 in Paraffin-embedded Human thyroid tissue by Immunohistochemistry.

Immunohistochemistry (Formalin/PFA-fixed paraffin-embedded sections) - Anti-IRF3 antibody [OT15D2] (ab124399)



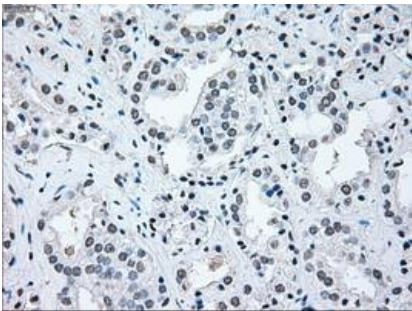
ab124399 at 1/50 dilution staining IRF3 in Paraffin-embedded Human thyroid carcinoma tissue by Immunohistochemistry.

Immunohistochemistry (Formalin/PFA-fixed paraffin-embedded sections) - Anti-IRF3 antibody [OT15D2] (ab124399)



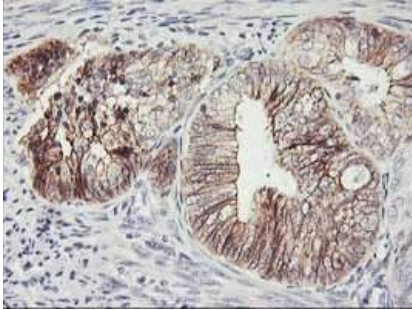
ab124399 at 1/50 dilution staining IRF3 in Paraffin-embedded Human endometrium tissue by Immunohistochemistry.

Immunohistochemistry (Formalin/PFA-fixed paraffin-embedded sections) - Anti-IRF3 antibody [OT15D2] (ab124399)



ab124399 at 1/50 dilution staining IRF3 in Paraffin-embedded Human prostate carcinoma tissue by Immunohistochemistry.

Immunohistochemistry (Formalin/PFA-fixed paraffin-embedded sections) - Anti-IRF3 antibody [OT15D2] (ab124399)



ab124399 at 1/50 dilution staining IRF3 in Paraffin-embedded Human bladder carcinoma tissue by Immunohistochemistry.

Immunohistochemistry (Formalin/PFA-fixed paraffin-embedded sections) - Anti-IRF3 antibody [OT15D2] (ab124399)

Please note: All products are "FOR RESEARCH USE ONLY AND ARE NOT INTENDED FOR DIAGNOSTIC OR THERAPEUTIC USE"

Our Abpromise to you: Quality guaranteed and expert technical support

- Replacement or refund for products not performing as stated on the datasheet
- Valid for 12 months from date of delivery
- Response to your inquiry within 24 hours
- We provide support in Chinese, English, French, German, Japanese and Spanish
- Extensive multi-media technical resources to help you
- We investigate all quality concerns to ensure our products perform to the highest standards

If the product does not perform as described on this datasheet, we will offer a refund or replacement. For full details of the Abpromise, please visit <https://www.abcam.com/abpromise> or contact our technical team.

Terms and conditions

- Guarantee only valid for products bought direct from Abcam or one of our authorized distributors