


Product datasheet

Anti-STAT6 (phospho Y641) antibody ab125308

1 Image

Overview

Product name	Anti-STAT6 (phospho Y641) antibody
Description	Rabbit polyclonal to STAT6 (phospho Y641)
Host species	Rabbit
Specificity	ab125308 recognizes STAT6 (pY641) with a phosphorylated site of Tyr641. It does not cross-react with non-phosphospecific peptide.
Tested applications	Suitable for: WB, IP, ELISA, IHC-P
Species reactivity	Reacts with: Mouse, Human Predicted to work with: Rat 
Immunogen	A synthetic peptide surrounding the epitope -RGYVP-- with phosphorylation sites at Tyr641 of STAT6 protein from Human, Mouse and Rat.
Positive control	IL-4 treated HepG2 cell lysate

Properties

Form	Liquid
Storage instructions	Shipped at 4°C. Store at +4°C short term (1-2 weeks). Upon delivery aliquot. Store at -20°C or -80°C. Avoid freeze / thaw cycle.
Storage buffer	pH: 7.20 Constituent: Tris buffered saline Note: Contains antibody stabilizer(0.05% PROCLIN300, 10MG/ML BSA, 10% Glycerol)
Purity	Immunogen affinity purified
Clonality	Polyclonal
Isotype	IgG

Applications

Our [Abpromise guarantee](#) covers the use of **ab125308** in the following tested applications.

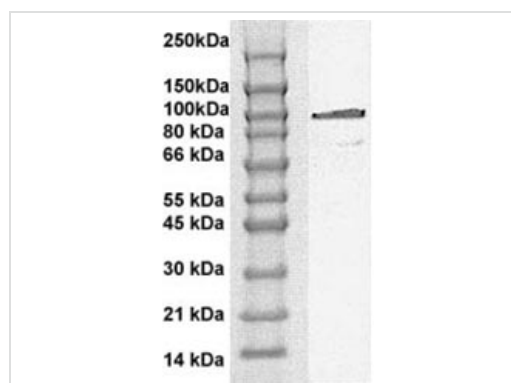
The application notes include recommended starting dilutions; optimal dilutions/concentrations should be determined by the end user.

Application	Abreviews	Notes
WB		Use a concentration of 0.1 - 1 µg/ml. Predicted molecular weight: 94 kDa.
IP		Use a concentration of 2 - 5 µg/ml.
ELISA		Use a concentration of 0.01 - 0.1 µg/ml.
IHC-P		1/100.

Target

Function	Carries out a dual function: signal transduction and activation of transcription. Involved in interleukin-4 signalling.
Sequence similarities	Belongs to the transcription factor STAT family. Contains 1 SH2 domain.
Post-translational modifications	Tyrosine phosphorylated following stimulation by IL-4 and IL-3.
Cellular localization	Cytoplasm. Nucleus. Translocated into the nucleus in response to phosphorylation.

Images



Western blot - Anti-STAT6 (phospho Y641) antibody (ab125308)

Anti-STAT6 (phospho Y641) antibody (ab125308) at 1/500 dilution + IL-4 treated HepG2 cell lysate

Predicted band size: 94 kDa

Please note: All products are "FOR RESEARCH USE ONLY AND ARE NOT INTENDED FOR DIAGNOSTIC OR THERAPEUTIC USE"

Our Abpromise to you: Quality guaranteed and expert technical support

- Replacement or refund for products not performing as stated on the datasheet
- Valid for 12 months from date of delivery
- Response to your inquiry within 24 hours
- We provide support in Chinese, English, French, German, Japanese and Spanish

- Extensive multi-media technical resources to help you
- We investigate all quality concerns to ensure our products perform to the highest standards

If the product does not perform as described on this datasheet, we will offer a refund or replacement. For full details of the Abpromise, please visit <https://www.abcam.com/abpromise> or contact our technical team.

Terms and conditions

- Guarantee only valid for products bought direct from Abcam or one of our authorized distributors