

Product datasheet

Anti-Sm-E antibody ab125445

1 Image

Overview

Product name	Anti-Sm-E antibody
Description	Rabbit polyclonal to Sm-E
Host species	Rabbit
Tested applications	Suitable for: WB
Species reactivity	Reacts with: Human Predicted to work with: Mouse, Rat, Goat, Chicken, Guinea pig, Cow, Cat, Dog
Immunogen	Synthetic peptide corresponding to a region within N terminal amino acids 30-79 (RIQVWLYEQV NMRIEGCIIG FDEYMNLVLD DAEEIHSKTK SRKQLGRIML) of Human SNRPE (NP_003085). Run BLAST with ExPASy Run BLAST with NCBI
Positive control	HeLa cell lysate.

Properties

Form	Liquid
Storage instructions	Shipped at 4°C. Upon delivery aliquot and store at -20°C. Avoid repeated freeze / thaw cycles.
Storage buffer	Preservative: 0.09% Sodium azide Constituents: 2% Sucrose, PBS
Purity	Immunogen affinity purified
Clonality	Polyclonal
Isotype	IgG

Applications

Our [Abpromise guarantee](#) covers the use of **ab125445** in the following tested applications.

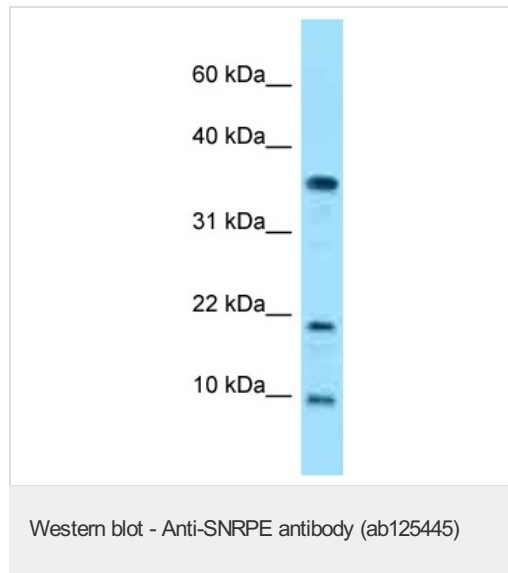
The application notes include recommended starting dilutions; optimal dilutions/concentrations should be determined by the end user.

Application	Abreviews	Notes
WB		Use a concentration of 1 µg/ml. Predicted molecular weight: 11 kDa. Good results were obtained when blocked with 5% non-fat dry milk in 0.05% PBS-T.

Target

Function	Appears to function in the U7 snRNP complex that is involved in histone 3'-end processing. Associated with snRNP U1, U2, U4/U6 and U5.
Sequence similarities	Belongs to the snRNP Sm proteins family.
Cellular localization	Nucleus.

Images



Anti-Sm-E antibody (ab125445) at 1 µg/ml + HeLa cell lysate at 10 µg

Predicted band size: 11 kDa

Gel concentration: 10-20%

Please note: All products are "FOR RESEARCH USE ONLY AND ARE NOT INTENDED FOR DIAGNOSTIC OR THERAPEUTIC USE"

Our Abpromise to you: Quality guaranteed and expert technical support

- Replacement or refund for products not performing as stated on the datasheet
- Valid for 12 months from date of delivery
- Response to your inquiry within 24 hours
- We provide support in Chinese, English, French, German, Japanese and Spanish
- Extensive multi-media technical resources to help you
- We investigate all quality concerns to ensure our products perform to the highest standards

If the product does not perform as described on this datasheet, we will offer a refund or replacement. For full details of the Abpromise, please visit <https://www.abcam.com/abpromise> or contact our technical team.

Terms and conditions

- Guarantee only valid for products bought direct from Abcam or one of our authorized distributors