


Product datasheet

Anti-PLA2G1B antibody ab125866

1 Image

Overview

---

<b>Product name</b>	Anti-PLA2G1B antibody
<b>Description</b>	Rabbit polyclonal to PLA2G1B
<b>Host species</b>	Rabbit
<b>Tested applications</b>	<b>Suitable for:</b> WB
<b>Species reactivity</b>	<b>Reacts with:</b> Human <b>Predicted to work with:</b> Dog 
<b>Immunogen</b>	Recombinant fragment, corresponding to a region within N terminal amino acids 1-136 of Human PLA2G1B (NP_000919).
<b>Positive control</b>	A549 and HeLa whole cell lysates.

Properties

---

<b>Form</b>	Liquid
<b>Storage instructions</b>	Shipped at 4°C. Upon delivery aliquot and store at -20°C or -80°C. Avoid repeated freeze / thaw cycles.
<b>Storage buffer</b>	pH: 7.00 Preservative: 0.01% Thimerosal (merthiolate) Constituents: 0.75% Glycine, 1.21% Tris, 20% Glycerol, 1% BSA
<b>Purity</b>	Immunogen affinity purified
<b>Purification notes</b>	ab125866 is purified by antigen-affinity chromatography.
<b>Clonality</b>	Polyclonal
<b>Isotype</b>	IgG

Applications

---

Our [Abpromise guarantee](#) covers the use of **ab125866** in the following tested applications.

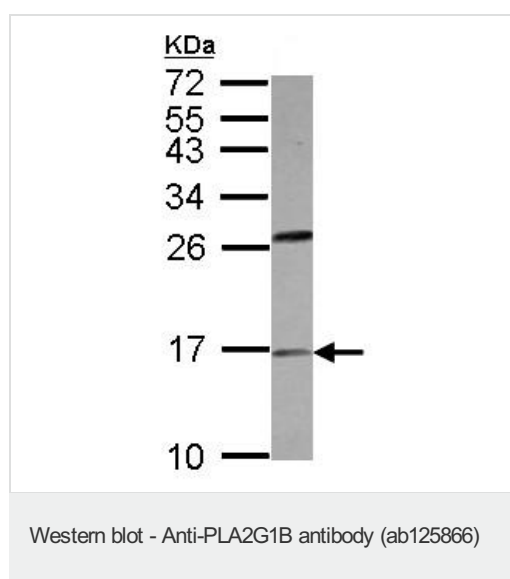
The application notes include recommended starting dilutions; optimal dilutions/concentrations should be determined by the end user.

Application	Abreviews	Notes
WB		1/500 - 1/3000. Predicted molecular weight: 16 kDa.

## Target

<b>Function</b>	PA2 catalyzes the calcium-dependent hydrolysis of the 2-acyl groups in 3-sn-phosphoglycerides.
<b>Sequence similarities</b>	Belongs to the phospholipase A2 family.
<b>Cellular localization</b>	Secreted.

## Images



Anti-PLA2G1B antibody (ab125866) at 1/500 dilution + HeLa whole cell lysate at 30 µg

**Predicted band size:** 16 kDa

15% SDS PAGE

**Please note:** All products are "FOR RESEARCH USE ONLY AND ARE NOT INTENDED FOR DIAGNOSTIC OR THERAPEUTIC USE"

## Our Abpromise to you: Quality guaranteed and expert technical support

- Replacement or refund for products not performing as stated on the datasheet
- Valid for 12 months from date of delivery
- Response to your inquiry within 24 hours
- We provide support in Chinese, English, French, German, Japanese and Spanish
- Extensive multi-media technical resources to help you
- We investigate all quality concerns to ensure our products perform to the highest standards

If the product does not perform as described on this datasheet, we will offer a refund or replacement. For full details of the Abpromise, please visit <https://www.abcam.com/abpromise> or contact our technical team.

## Terms and conditions

- Guarantee only valid for products bought direct from Abcam or one of our authorized distributors