

Product datasheet

Anti-RISC antibody ab13716

★★★★★ 1 Abreviews 1 References 2 Images

Overview

Product name	Anti-RISC antibody
Description	Rabbit polyclonal to RISC
Host species	Rabbit
Tested applications	Suitable for: WB, ICC
Species reactivity	Reacts with: Mouse, Rat, Human
Immunogen	Synthetic peptide: VIDWPTEEGKEVWDYV, corresponding to amino acids 28-43 of Human RISC. Run BLAST with ExPASy Run BLAST with NCBI
Positive control	Tested with human heart cell lysate.

Properties

Form	Liquid
Storage instructions	Shipped at 4°C. Store at +4°C short term (1-2 weeks). Upon delivery aliquot. Store at -20°C or -80°C. Avoid freeze / thaw cycle.
Storage buffer	Preservative: 0.02% Sodium Azide Constituents: PBS, 0.1mg/ml BSA
Purity	Protein G purified
Clonality	Polyclonal
Isotype	IgG

Applications

Our [Abpromise guarantee](#) covers the use of **ab13716** in the following tested applications.

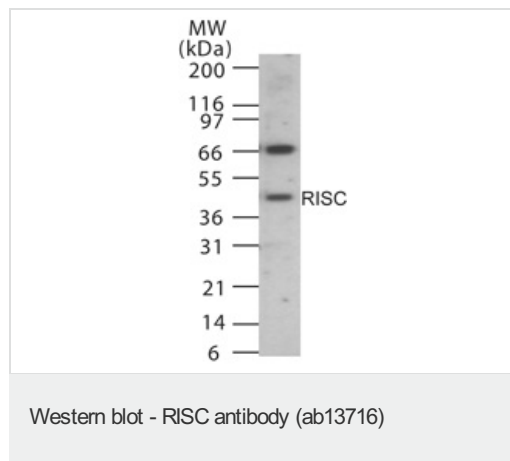
The application notes include recommended starting dilutions; optimal dilutions/concentrations should be determined by the end user.

Application	Abreviews	Notes
WB		1/500 - 1/1000. Detects a band of approximately 51 kDa.
ICC	★★★★★	1/20.

Target

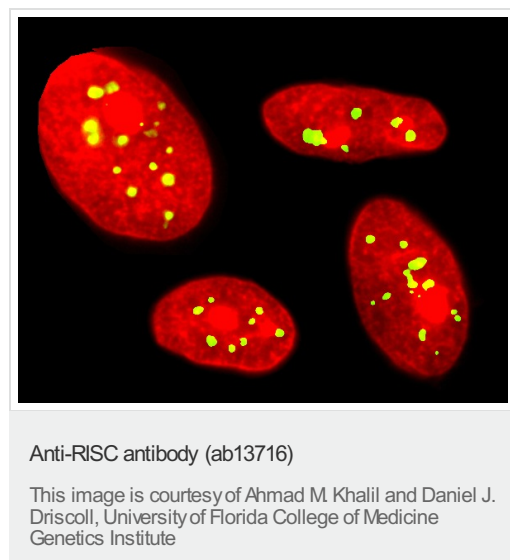
Function	May be involved in vascular wall and kidney homeostasis.
Sequence similarities	Belongs to the peptidase S10 family.
Cellular localization	Secreted.

Images



Western blot analysis of human RISC in 15mgs of human heart cell lysate using ab13716 at 1/1000 dilution.

Western blot analysis of human RISC in 15mgs of human heart cell lysate using ab13716 at 1/1000 dilution.



Human female fibroblasts are immunostained with ab13716 (1/20) for RISC (FITC). Nuclear DNA is stained red with propidium iodide. RISC is found in several discrete regions within the nucleus.

Human female fibroblasts are immunostained with ab13716 (1/20) for RISC (FITC). Nuclear DNA is stained red with propidium iodide. RISC is found in several discrete regions within the nucleus.

Please note: All products are "FOR RESEARCH USE ONLY AND ARE NOT INTENDED FOR DIAGNOSTIC OR THERAPEUTIC USE"

Our Abpromise to you: Quality guaranteed and expert technical support

- Replacement or refund for products not performing as stated on the datasheet
- Valid for 12 months from date of delivery
- Response to your inquiry within 24 hours

- We provide support in Chinese, English, French, German, Japanese and Spanish
- Extensive multi-media technical resources to help you
- We investigate all quality concerns to ensure our products perform to the highest standards

If the product does not perform as described on this datasheet, we will offer a refund or replacement. For full details of the Abpromise, please visit <https://www.abcam.com/abpromise> or contact our technical team.

Terms and conditions

- Guarantee only valid for products bought direct from Abcam or one of our authorized distributors