

## Product datasheet

# Anti-SCP1 antibody ab15087

★★★★★ 2 Abreviews 20 References 2 Images

### Overview

<b>Product name</b>	Anti-SCP1 antibody
<b>Description</b>	Rabbit polyclonal to SCP1
<b>Host species</b>	Rabbit
<b>Tested applications</b>	<b>Suitable for:</b> ICC/IF, IHC-P, ICC
<b>Species reactivity</b>	<b>Reacts with:</b> Mouse, Rat, Human, Pig, Common marmoset
<b>Immunogen</b>	Synthetic peptide (Human) (C terminal).

### Properties

<b>Form</b>	Liquid
<b>Storage instructions</b>	Shipped at 4°C. Store at +4°C short term (1-2 weeks). Store at -20°C or -80°C. Avoid freeze / thaw cycle.
<b>Storage buffer</b>	Preservative: 0.1% Sodium azide Constituent: Tris citrate/phosphate
<b>Purity</b>	Immunogen affinity purified
<b>Clonality</b>	Polyclonal
<b>Isotype</b>	IgG

### Applications

Our [Abpromise guarantee](#) covers the use of **ab15087** in the following tested applications.

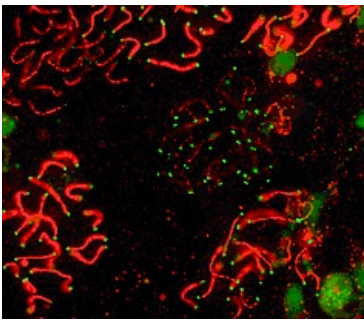
The application notes include recommended starting dilutions; optimal dilutions/concentrations should be determined by the end user.

Application	Abreviews	Notes
ICC/IF		1/300 - 1/750.
IHC-P	★★★★★	1/100.
ICC	★★★★☆	Use at an assay dependent concentration.

## Target

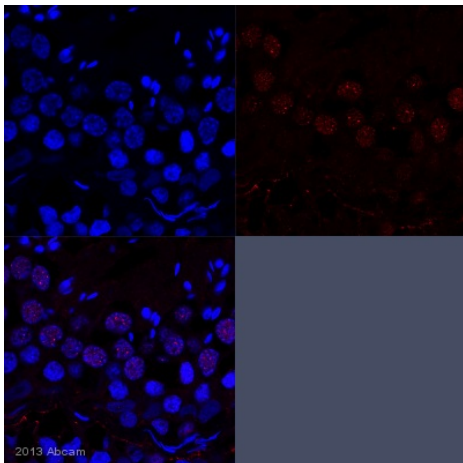
<b>Function</b>	Major component of the transverse filaments of synaptonemal complexes (SCS), formed between homologous chromosomes during meiotic prophase.
<b>Tissue specificity</b>	Testis.
<b>Domain</b>	Consists of an alpha-helical stretch of 700 AA residues, flanked by N- and C-terminal globular domains. The C-terminal domain has DNA-binding capacity.
<b>Cellular localization</b>	Nucleus. Chromosome. In tripartite segments of synaptonemal complexes, between lateral elements in the nucleus. Found only where the chromosome cores are synapsed. Its N-terminus is found towards the center of the synaptonemal complex while the C-terminus extends well into the lateral domain of the synaptonemal complex.

## Images



SCP1 labeled in mouse pachytene preparation (red), using ab15087. CDK2 staining, near telomeres, is also present (green).

Immunocytochemistry/ Immunofluorescence - Anti-SCP1 antibody (ab15087)



IHC-P image of SCP1 staining with ab15087 on tissue sections from adult marmoset testis. The sections were subjected to heat-mediated antigen retrieval using Dako antigen retrieval solution. The sections were then blocked with 5% milk for 30 minutes at 25°C, before incubation with ab15087 (1/100 dilution) for 18 hours at 4°C. The secondary was an Alexa-Fluor 555 conjugated goat anti-rabbit polyclonal, used at a 1/500 dilution.

Immunohistochemistry (Formalin/PFA-fixed paraffin-embedded sections) - Anti-SCP1 antibody (ab15087)

This image is courtesy of an Abreview from Zachary Yu-Ching Lin.

**Please note:** All products are "FOR RESEARCH USE ONLY AND ARE NOT INTENDED FOR DIAGNOSTIC OR THERAPEUTIC USE"

- Replacement or refund for products not performing as stated on the datasheet
- Valid for 12 months from date of delivery
- Response to your inquiry within 24 hours
  
- We provide support in Chinese, English, French, German, Japanese and Spanish
- Extensive multi-media technical resources to help you
- We investigate all quality concerns to ensure our products perform to the highest standards

If the product does not perform as described on this datasheet, we will offer a refund or replacement. For full details of the Abpromise, please visit <https://www.abcam.com/abpromise> or contact our technical team.

### **Terms and conditions**

---

- Guarantee only valid for products bought direct from Abcam or one of our authorized distributors